

伟赛尔 VINCER 电动阀产品目录册 PRODUCT CATALOG

Quality valve and unbeatable value



GET IN TOUCH
VALVE CONSULTANT

Hebe Wong

+86 13826949015

www.vincervalve.com



关于伟赛尔

ABOUT VINCER

VINCER成立于2020年，是一家创新型自动化阀门科技公司。旨在为我们的客户提供优质阀门和无与伦比的价值解决方案。

我们专注于为各个行业提供高质量的自动化阀门解决方案，提供广泛的产品，例如驱动球阀、蝶阀、闸阀和控制阀。我们的阀门性能可靠，提供精确控制，满足海水淡化、废水处理、可再生能源等行业的流体控制需求。

拥有一支由经验丰富的工程师和销售专业人员组成的专业团队，我们优先考虑客户满意度并提供全面的技术支持。我们致力于持续创新，提供最先进的解决方案，优先考虑产品性能、可靠性和成本效益。

此外，我们认真履行社会责任，实施环保措施并参与社区活动。

选择 VINCER 作为您可靠的、以客户为中心的自动化阀门供应商。联系我们获取更多信息。

.....
Founded in 2020, VINCER is an innovative automation valve technology company. Aim to provide Quality Valves and Unbeatable Value solutions to our clients.

We specialize in high-quality automation valve solutions for various industries, offering a wide range of products like actuated ball valves, butterfly valves, gate valves and control valves. Our valves are reliable, provide precise control, and meet the fluid control needs of industries such as desalination, wastewater treatment, renewable energy, and more.

With a dedicated team of experienced engineers and sales professionals, we prioritize customer satisfaction and provide comprehensive technical support. We are committed to continuous innovation, delivering state-of-the-art solutions that prioritize product performance, reliability, and cost-effectiveness.

Additionally, we take our social responsibility seriously, implementing environmental measures and engaging in community activities.

Choose VINCER as your reliable and customer-centric automation valve supplier. Contact us for more information.



服务与支持

SERVICE AND SUPPORT

◆ 质量保证

通过严格的测试和先进的技术确保了顶级品质的阀门，满足客户交付前的要求。

Quality Assurance
Top-quality valves ensured through rigorous testing and advanced technology, meeting customer requirements before delivery.

◆ 定制化解决方案

由经验丰富的工程师定制解决方案，为特定客户需求提供从设计到维护的支持。

Customized Solutions
Tailored solutions by experienced engineers, supporting from design to maintenance for specific customer needs.

◆ 交货及时

高效的生产可确保按时交付产品，并提供灵活的选择来满足项目进度。

Timely Delivery
Efficient production ensures on-time product delivery, offering flexible options to meet project schedules.

◆ 售后服务

除了交付之外，我们还提供响应迅速的解决方案，以获得满意的客户体验。

After-Sales Service
Beyond delivery, we provide responsive solutions for a satisfactory customer experience.

◆ 信任与协作

我们以信任、诚实和透明的方式建立持久的关系，为共同的成功而共同努力。

Trust and Collaboration
Building lasting relationships with trust, honesty, and transparency, we work together for mutual success.

工厂展示

FACTORY DISPLAY



目录

CONTENTS

VINCER

伟赛尔电动执行器

Electric Actuators

- 角行程电动执行器 8
Quarter-turn Electric Actuators
- 防爆电动执行器 8
Explosion-proof Electric Actuators
- 多回转电动执行器 8
Multi-Turn Electric Actuators

伟赛尔电动球阀

Electric Ball Valves

- VE10-B-3PCS 伟赛尔电动三片式球阀 19
VE10-B-3PCS VINCER Electric 3-Piece Ball Valve
- VE10-B-F 伟赛尔电动法兰球阀 22
VE10-B-F VINCER Electric Flanged Ball Valve
- VE10-B-F3 伟赛尔电动三通法兰球阀 28
VE10-B-F3 VINCER Electric 3-Way Flanged Ball Valve
- VE10-B-P 伟赛尔电动塑料球阀 30
VE10-B-P VINCER Electric Plastic Ball Valve
- VE10-B-P3 伟赛尔电动三通塑料球阀 34
VE10-B-P3 VINCER Electric 3-Way Plastic Ball Valve
- VE10-B-K 伟赛尔电动卫生级球阀 35
VE10-B-K VINCER Electric Sanitary 2-Way Clamp Ball Valve
- VE10-B-K3 伟赛尔电动卫生级三通球阀 36
VE10-B-K3 VINCER Electric Sanitary 3-Way Clamp Ball Valve
- VE10-B-H 伟赛尔电动高压球阀 37
VE10-B-H VINCER Electric High-Pressure 2-Way Ball Valve
- VE10-B-H3 伟赛尔电动三通高压球阀 38
VE10-B-H3 VINCER Electric High-Pressure 3-Way Ball Valve
- VE10-B-F-PTFE 电动衬氟法兰球阀 39
VE10-B-F-PTFE VINCER Electric PTFE-Lined Ball Valve
- VE10-B-I 伟赛尔电动薄型球阀 40
VE10-B-I VINCER Electric Italian Thin Ball Valve
- VE10-B-V 伟赛尔电动V型球阀 41
VE10-B-V VINCER Electric V-Port Ball Valve

伟赛尔电动蝶阀

Electric Butterfly Valves

- 电动对夹蝶阀 44
VE20-W VINCER Electric Wafer Butterfly Valve
- 电动塑料蝶阀 46
VE20-P VINCER Electric Plastic Butterfly Valve
- 电动法兰蝶阀 47
VE20-F VINCER Electric Flanged Butterfly Valve
- 电动卫生级蝶阀 48
VE20-K VINCER Electric Sanitary Clamp Butterfly Valve
- 电动衬氟蝶阀 49
VE20-PTFE VINCER Electric PTFE-Lined Butterfly Valve
- 电动硬密封蝶阀 50
VE20-HA VINCER Electric Hard-Seated Butterfly Valve
- 电动凸耳蝶阀 52
VE20-LUG VINCER Electric Lugged Butterfly Valve

伟赛尔多回转阀门

Multi-Turn Actuator Valves

- 电动闸阀 54
VE30-EGA VINCER Electric Gate Valve
- 电动截止阀 58
VE30-EGO VINCER Electric Globe Valve
- 电动刀闸阀 61
VE30-EKG VINCER Electric Knife Gate Valve

伟赛尔精小型电动球阀

Miniature Type Motorized Ball Valve

- VE-M 精小型电动螺纹球阀 64
VE-M Miniature Motorized Threaded Ball Valve
- VE-MT 精小型电动三通螺纹球阀 65
VE-MT Miniature Motorized 3-Way Threaded Ball Valve
- VE-MHT 精小型电动三通螺纹球阀 66
VE-MHT Miniature Motorized 3-Way Threaded Ball Valve
- VE-MH 精小型电动螺纹球阀 68
VE-MH Miniature Motorized 3-piece Threaded Ball Valve

电动执行器种类
Types of electric actuators



角行程电动执行器
Quarter-turn Electric Actuators



防爆电动执行器
Explosion-proof Electric Actuators



多回转电动执行器
Multi-Turn Electric Actuators

伟赛尔电动执行器

ELECTRIC ACTUATORS

性能特点

Performance Features

1、壳体:

壳体为硬质铝合金, 经阳极氧化处理或聚酯粉末涂层, 耐腐蚀性强。

Shell:

Body material is hard aluminum alloy, which is treated by hard anodic oxidation and coated by Polyester powder, so that it has great corrosion resistance.

2、电机:

全封闭鼠笼式电机, 体积小, 扭矩大, 惯性力小, 绝缘等级为F级, 可防止过热损坏电机。

Motor:

Fully enclosed cage type motor is small in size and inertia, large in torque. Insulation class is F grade which can prevent motor over-heating.

3、手动结构:

手柄的设计保证安全可靠、省力、体积小, 不通电时, 扳动手柄可进行手动操作使用.不用手动时, 将扳手至于扳手夹内, 方便使用。

Manual Override:

Small handle is reliable, energy-saving, It can be used for manual operation when electricity is off; In automatic operation, it can be fixed inside the clip for easy operation.

4、指示器:

指示器安装在中心轴上, 可以观察阀门位置, 透镜采用凸出镜设计, 不积水, 观察方便。

Indicator:

Indicator is assembled on center axis, valve position can be observed; Outside mirror design facilitates position observation and prevents water drops accumulation.

5、自锁:

精密的蜗轮杆机构可高效输出大扭矩, 效率高, 噪音低(最大50分贝), 寿命长:有自锁功能, 防止反转, 传动部分定可靠, 无需再加油。

Self lock:

Accurate turbo-worm structure can output large torque with high efficiency and little noise (Max. 50 decibel). Service life is quite long. Its self lock function can stop reverse rotation. Drive part is stable and reliable without additional lubrication.

6、防脱螺栓:

拆除外壳时, 螺栓附在壳体上, 不会脱落。

Captive Bolt:

Bolts won't fall off when cover is disassembled.

7、安装:

底部安装尺寸符合ISO5211/DIN3337国际标准, 孔成双四方形便于方杆的阀线性或45度转角安装, 适应性强, 可以垂直安装, 也可以水平安装。

Application:

Bottom connection complies with ISO5211/DIN3337 Standard. Star square hole is easy for square valve stem linear or 45° rotation application; Both vertical and horizontal assemble are available.

8、多种速度:

全行程时间5秒, 10秒, 30秒, 60秒, 90秒, 120秒, 240秒等。

Multiple speeds:

The total motion time is 5 seconds, 10 seconds, 30 seconds, 60 seconds, 90 seconds, 120 seconds, 240 seconds, etc.

9、自成一體:

智能控制模块高度集成于电动装置本体中, 无须外接定位器等。

Self-contained:

The intelligent control module is highly integrated in the electric device body, without the need for an external positioner, etc.

10、线路:

控制线路符合单相或三相电源标准, 线路布置紧凑合理, 接线端子可有效满足各种附加功能的要求。

Diagram:

Control diagram complies with single phase or three phase wiring standard, reasonable wiring diagram and connection terminal can meet requirement of other optional functions.

电动执行器性能特点

Performance characteristics of electric actuators

性能 Performance	机型 Model	05	10	16	30	60	125	250	400	
回转角度 Angle of Rotation		0-90°	0-90°	0-90°	0-90°	0-90°	0-90°	0-90°	0-90°	
AC220V 交流电 AC Voltage	输出力矩 Torque Output	50Nm	100Nm	160Nm	300Nm	600Nm	1250Nm	2500Nm	4000Nm	
	动作时间 90°Cycle Time	10S/ 20S/60S	15S/30S/60S			30S/60S	90S	90S	90S	
	工作电流 Working Current	0.23A	0.35A	0.40A	0.45A	0.60A	1.03A	1.85A	2.7A	
	电机功率 Drive Motor	50W	75W	80W	100W	130W	210W	285W	360W	
	电源 Voltage Options	AC220V, AC110V, AC24V								
	控制电路 Control Circuit	B型:开关型无源触点型 B:ON/OFF Type with Passive Contact Signal Feedback								
DC 直流电 DC Voltage	输出力矩 Torque Output	60Nm	110Nm	170Nm	330Nm	680Nm	1300Nm	2500Nm		
	动作时间 90°Cycle Time	8S	11S	11S	9S	35S	32S	32S		
	启动电流 Starting Current	0.74A	1.40A	1.40A	3.80A	7.00A	3.80A	4.30A		
	工作电流 Working Current	0.38A	0.38A	0.40A	1.03A	0.70A	1.20A	1.40A		
	电机功率 Drive Motor	9.5W	9.0W	9.6W	30W	33W	30W	33W		
	电源 Voltage Options	DC12V, DC24V, DC110V, DC220V								
AC380V	输出力矩 Torque Output	70Nm	100Nm	200Nm	300Nm	600Nm	1300Nm	2500Nm		
	动作时间 90°Cycle Time	20S	27S	27S	25S	26S	50S	50S		
	启动电流 Starting Current	0.20A	0.28A	0.30A	0.55A	0.45A	0.60A	0.77A		
	工作电流 Working Current	0.16A	0.25A	0.27A	0.53A	0.43A	0.65A	0.75A		
	电机功率 Drive Motor	51W	70W	77W	117W	220W	90W	103W		
	电源 Voltage Options	AC380V								
控制电路 Control Circuit	G型:三相交流380V无源触点型(默认) G: AC380V Three-Phase Power Supply with Passive Signal Feedback (Standard) H型:三相交流380V开度信号型(可选) H: AC380V Three-Phase Power Supply with Resistance Potentiometer Signal Feedback (Optional)									
防护等级 Protection Class	IP65									
环境温度 Ambient Temp	-30°C ~ +60°C									
安装方位 Installation Angle	360°任意角度安装 Installation at any angle									
电气接口 Electrical Connection	G1/2防水电缆接头、电源线、信号线各一个 G1/2 Water-proof Cable Connectors, Electric Power Wire, Signal Wire									

开关型性能特点

ON/OFF Type Performance characteristics

电源 Voltage Options	AC110V,AC220V,AC380V,DC24V,AC24V		
绝缘电阻 Insulation Resistance	100MΩ/500V		
耐压等级 Withstand Voltage	1500V;1分钟		
控制电路 Control Circuit	A型:开关型(标准型) B型:开关型无源触点型 C型:开关型带电阻电位计反馈 D型:开关型带电阻电位计和中间位置反馈 E型:调节型带伺服控制器模块 F型:直流电机控制电路 G型:三相交流380V无源触点型 H型:三相交流380V开度信号型	A: ON/OFF Type with Light Indicator Signal Feedback B: ON/OFF Type with Passive Contact Signal Feedback C: ON/OFF Type with Resistance Potentiometer Signal Feedback D: ON/OFF Type with Resistance Potentiometer and Neutral Position Signal Feedback E: Regulation Type with Servo Control Module F: DC24V/ DC12V Direct ON/OFF Type G: AC380V Three-Phase Power Supply with Passive Signal Feedback H: AC380V Three-Phase Power Supply with Resistance Potentiometer Signal Feedback	
选装功能 Optional Function	◇ 过力矩保护器 Over Torque Protectors	◇ 除湿加热器 Dehumidify Heater	◇ 不锈钢支架、联轴器 Stainless Steel Coupling & Yoke

调节型性能特点

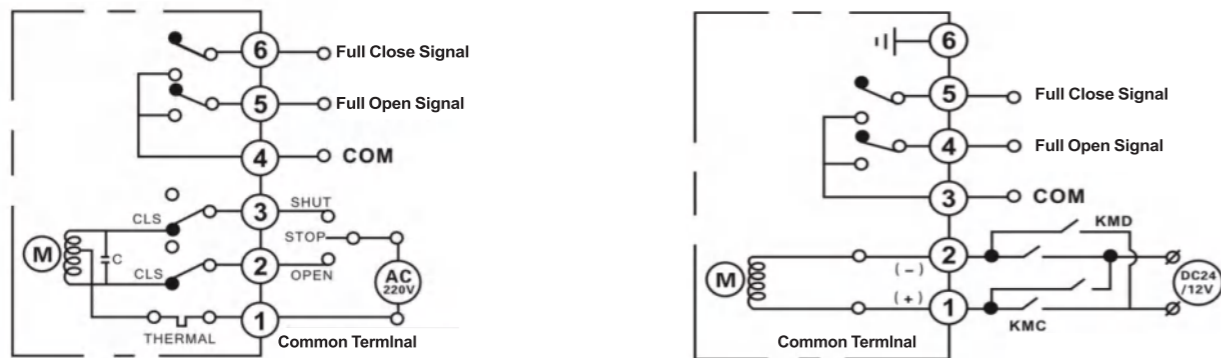
Regulation type Performance characteristics

电源 Voltage Options	AC110V,AC220V,AC380V,DC24V,AC24V
输入信号 Input Signal	4-20mADC、1-5VDC、0-10VDC
输出信号 Output Signal	4-20mADC、1-5VDC、0-10VDC
基本误差 Tolerance	±0.5%
回差 Return Difference	<0.3%
死区 Dead Zone	0.1% to 1.6%
阻尼特性 Damping Characteristics	0
机械重复性误差 Mechanical Repeatability Error	0%

注:不能将两台或数台电动装置并联,即不能用同一控制器的接点去控制数台电动装置,否则会造成失控,电机过热及损坏等。
Note: Can't connect one actuator parallel with other ones, in other words, can't use the same control-ler contact points to control two and above actuators, otherwise it will cost out of control, motor overheating, product damage and shorter service life.

电动执行器开关型接线图 ON/OFF Type Wiring Diagram

六线控制，控制电压AC220V，通电打开，断电关闭，同时输出开到位信号和关到位信号，是常用的电动执行器。
Six-wire control, control voltage AC220V, power-on open, power-off close, and output open end signal and close end signal at the same time, it is a commonly used electric actuator.



B型:开关型(标准型)带无源触点信号反馈(AC220V)
B: ON/OFF Type with Passive Contact Signal Feedback

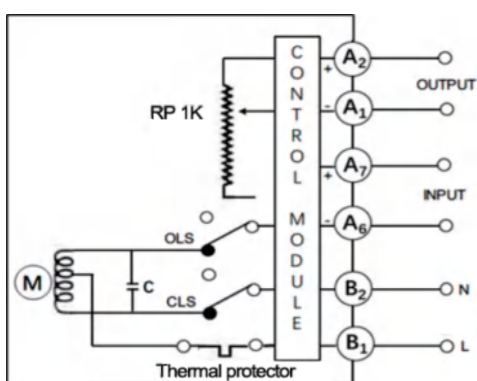
功能:通过开关电路实现开路、开关操作，并输出一组指示阀门全开、全闭位置无源开关信号(全开、全闭)。
结构:带两个中间位置开关。
Function: Finish open or close operations by the circuit, and the actuator outputs a set signal of passive position (full opening, full closing).
Structure: with two neutral positions switches.

F型:直流电机控制电路(DC24V)
F: DC24V/ DC12V Direct ON-OFF Type

功能:通过外部电路对直流电源正负极换，实现开启、关闭操作并输出一组无源触点(全开、全闭)
Function: The external circuit make positive and negative conversion of DC power to open or close, and the actuator outputs a set signal of passive position (full opening, full closing)

电动执行器调节型接线图 Regulation Type Wiring Diagram

六线控制，通过输入或者输出控制信号4-20mA或者0-10V可以控制阀门的开度，调节介质流量。
Six-wire control, through the input or output control signal 4-20ma or 0-10v can control the valve opening and adjust the medium flow.

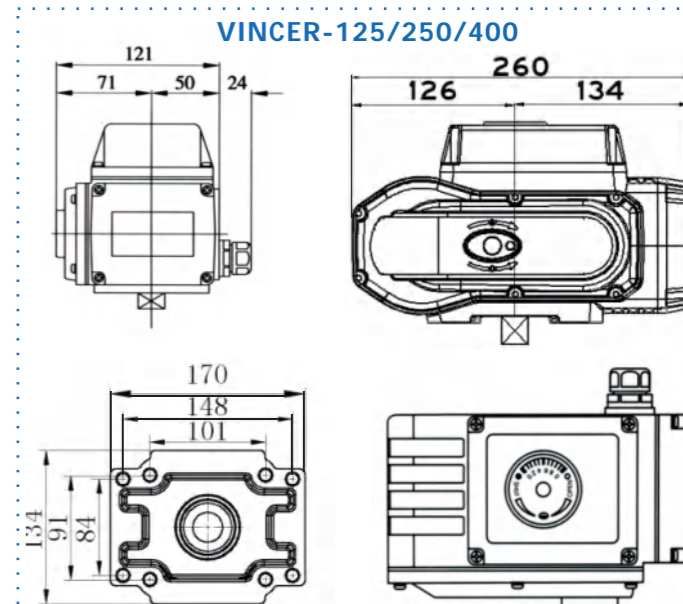
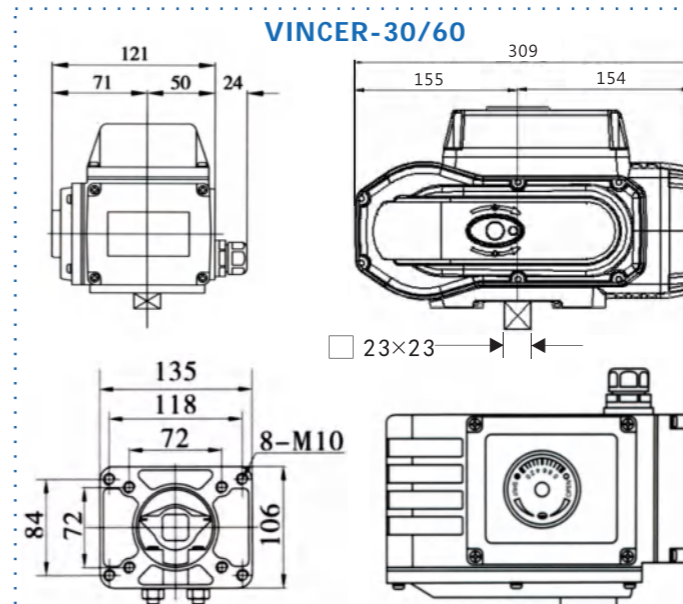
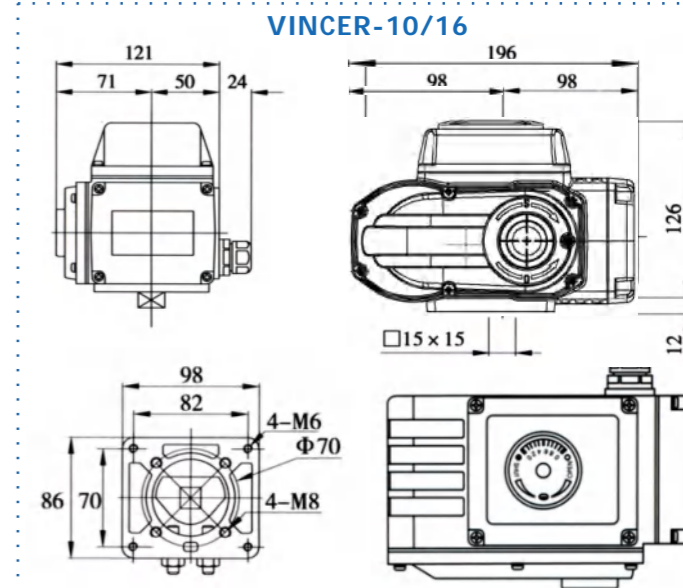
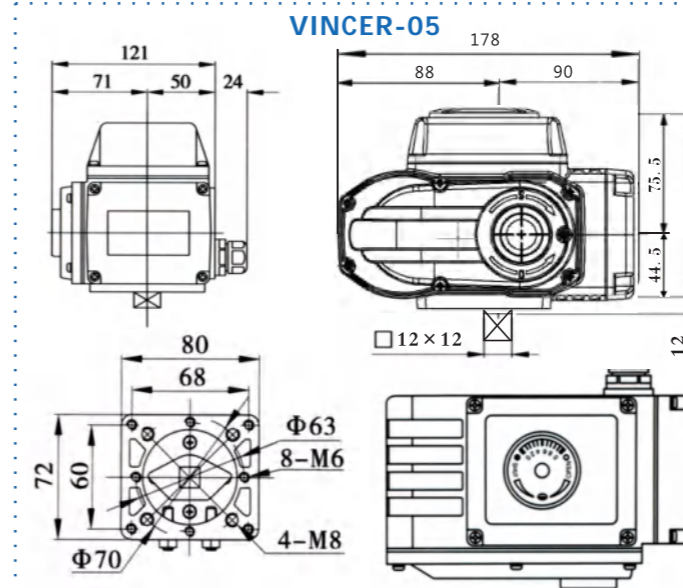


E型:调节型带伺服控制器模块(AC220V)
E: Regulation Type with Servo Control Module

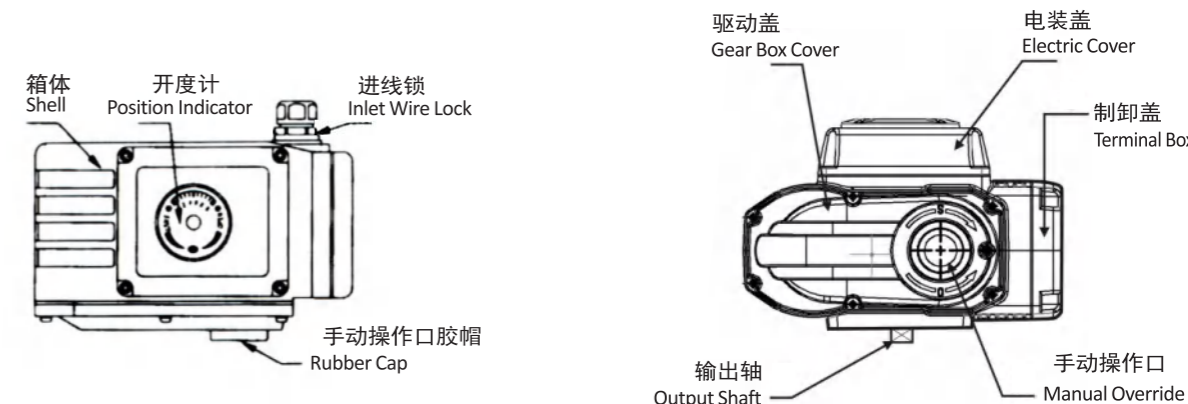
功能:调节作用，输入/输出信号:4-20mADC，1-5VDC或0-10VDC
结构:带控制模块和1KΩ电位器
Function: Modulating, input & output DC4-20mA, 1-5VDC, 0-10VDC
Structure: With servo control module and 1000Ω potentiometer

特别注意 CAUTION

不能将两台或数台电动装置并联，即不能用同一控制器的接点去控制数台电动装置，否则会造成失控，电机过热及产品损坏等，会大大影响电动装置的使用寿命。
Can't connect one actuator parallel with other ones, in other words, can't use the same control -ler contact points to control two and above actuators, otherwise it will cost out of control, motor overheating, product damage and shorter service life.



电动执行器各部位名称 Electric Actuator Construction



安装环境

Installation environment

- 1、本产品既可在室内安装，也可在室外安装，周边环境温度-30℃~+60℃范围内。
- 2、本产品属非防爆产品，请注意避开易燃易爆等环境。
- 3、在长期有雨水、原料等飞溅物和阳光直射的环境，需要安装保护整体的盖子。
- 4、请预留接线，手动操作等维修用空间。

The product can be installed indoor and outdoor, The surrounding environment temperature should be in-30℃~+60℃. Product is non-explosion-proof production, and the installation must be avoided being in flammable or explosive environment etc. The actuator should be in protection box in the environment of long-term with the splash of rain, material and direct sunlight. Please reserve space for controller, manual operation.

工作介质温度

Temperature of working medium

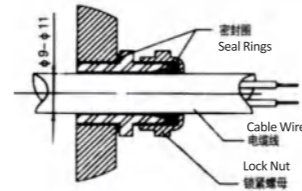
- 1、与阀门配套使用时，工作介质温度传到机体上面，机体温度会升高。
 - 2、工作介质是高温时与阀门连接的支架器，减少热传导作用。
- When matching with the valve, the actuator body's temperature will a bit rise if medium temperature happen heat transfer. If the temperature of medium is high, the bracket has the function of reducing heat conduction.

安装在阀门上

Installed on the valve body

- 1、手动转动阀门，确定无异常情况，并使用阀门处于全闭位置。
- 2、将联轴器一端套在阀门芯轴上。
- 3、将电动执行器机体转到全闭位置，出力轴插入联轴器四方孔内。
- 4、紧固电动执行器机体和阀门平台间的螺钉。
- 5、用手柄转动执行器机构，确认运行平稳，无偏心，无歪斜。注意不要超程。

Manually operate the actuator to drive the valve, confirm it does not have abnormal situation. Turn the valve in full closed position. Set one end of couplings on valve spindle. Turn the electric actuator to full closing position, and insert output-input shaft into the square holes of couplings. Set the screw between the electric actuator and valve body. Turn actuator by hand shank, confirm that it moves translation, no eccentric, no skew and no overrun.



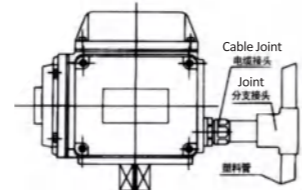
安装电缆线

Cable installation

- 1、用电缆管时，电缆管外径是 $\phi 9 \sim \phi 11$ ，要充分采取防水对策，执行器机体高于电缆管，磁电线管内水珠不至流进执行器机体以确保其安全。
- 2、使用电缆时，其外径是 $\phi 9 \sim \phi 11$ 的电缆。一律不准使用与电阻直径不相应的电缆，否则水珠可能从线索进入执行机构内，损坏所有内部零件。
- 3、信号线原则上要使用屏蔽线，不要与动力线平行配线。

Install wire tubes, The outside diameter of wire tubes should be $\phi 9 \sim \phi 11$. Take measures to proof water. To prevent actuator from flowing into wire tubes water, the actuation position should higher than wire tubes position. When installing wire, the outside diameter of wire should be $\phi 9 \sim \phi 11$. in case the water flow into actuator interior from line locking, all wire that are not allowed to be used.

The signal wire should be shielded wire in principle, don't parallel it to power wire.



特别提示

Special tips

不要将两台或数台电动装置的动力线并联，也就是不能用同一接线去控制多台电动装置，否则会造成失控，会电机过热及产品损坏等，会大大影响电动装置的使用寿命。如电动装置是安装在户外时，建议加装防雨、防护罩，这样能使电动机构的使用性能更稳定，寿命更长。

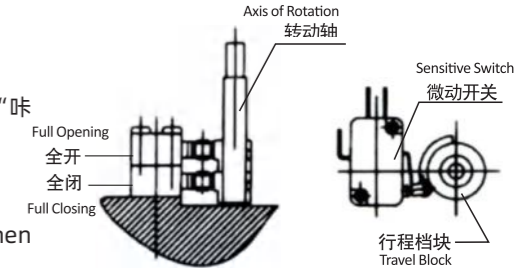
Caution: can't connect one actuator parallel with one another, in other words, can't use the same controller contact point to control more than one actuator, otherwise it will cause out of control, motor overheating, product damage, shorter service life. If the actuator is installed outdoor, we suggest equipping other protective cover to proof water, stabilize mechanical property, make a longer service life.

极限位置开关的调整

Adjustment of limit position switch

- 1、将阀门手动至全闭位置。
- 2、松开形成板块固定螺钉，转动下面板块，使下面形成开关动作，微动开关动作时会发出“咔嚓”声音，然后固定螺钉。
- 3、全开位置调整方法同上。

Turn the valve to full opening position by hand. Loosen the screw of travel block and turn the block to drive the travel switch, then fine-tuning sensitive switch until hearing "click", after that, set screw. The way of adjustment full opening position is the same as above.

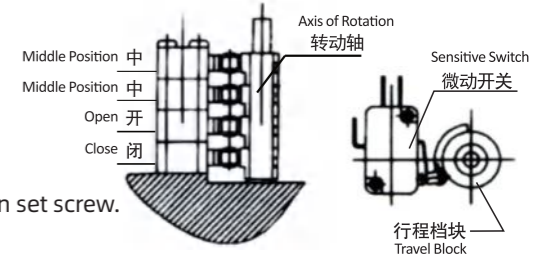


中间位置开关的调整

Adjustment of middle position switch

- 1、用手柄驱动阀门至所需位置。
- 2、松开形成档块固定螺钉，转动形成板块是相对应的微动开关动作，然后固定螺钉。
- 3、两个中间位置开关动作位置可根据使用需要进行调整。

Use hand shank to drive the valve to the position it need. Loosen the screw of travel block and turn the travel block to drive sensitive switch, then set screw. These two neutral position switches' position could be adjusted according to need.



定位器的调整

Adjustment of potentiometer

- 1、用手柄驱动执行机构向中间位置运行，使指针正指50%刻度线。
- 2、用万用表测量电位器始端和终端阻值(电位器1.3两角间阻值)，记下阻值R(如无特别要求，电位器的出厂默认为 $1K\Omega \pm 15\%$)。
- 3、用适当外力作用在电位器安装板上，使开度齿轮和电位器齿轮脱离咬合。
- 4、将万用表两表笔分别接在电位器动臂(电位器两脚)和另外任意一端上，缓缓转动电位器齿轮，观察万用表读数，当阻值 $R/2 \pm 2\Omega$ 时，停止调整并撤销外力使开度齿轮与电位器齿轮回复咬合即可。

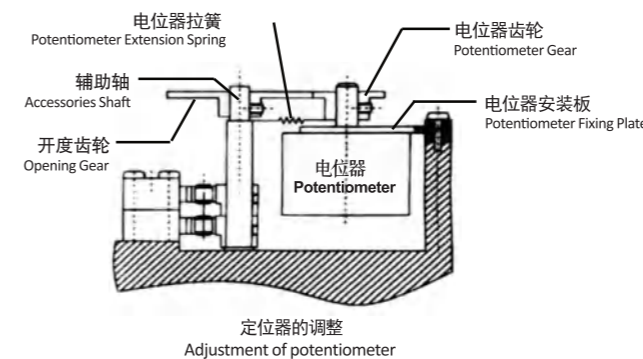
Use hand shank to drive actuator to neutral position, and turn the pointer point to 50% scale line. Use multimeter to test resistance of first and third port of potentiometer (resistance between the first port and third port in potentiometer), and mark R (potentiometer default is $1K\Omega \pm 15\%$ if no special request). Separate potentiometer gear from the opening gear by suitable external force on potentiometer fixing plate. Put one probe of multimeter to one potentiometer terminal, the other probe to another terminal, then rotate potentiometer gear and see number in multimeter. When the resistance value is equivalent to $R/2 \pm 2\Omega$, stop rotating, after that, mesh these two gears.

机械档块的调整

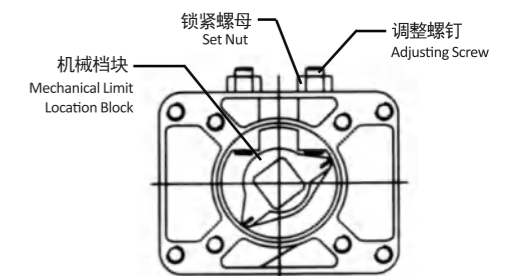
Adjustment of mechanical limit location block

- 1、用手柄驱动阀门至全开位置，并使全开位置开关动作(微动开关动作时会发出“咔嚓”声音)
- 2、松开锁紧螺母，使调整螺钉与机械档块相接触，然后将调整螺钉往回转动半圈，锁紧螺母。
- 3、用同样的方法进行全闭位置的调整。

Use hand shank to drive valve to full opening position and operate the switch (sensitive switch makes crack sound when it is running). Loosen the nut and turn the adjusting screw to touch the mechanical limit location block, then turn the adjusting screw a half turn back, set nut. Adjusting the full opening position by the same way as above.



定位器的调整
Adjustment of potentiometer



机械档块的调整
Adjustment of mechanical limit location block

主要技术参数/规格

Main technical parameters specifications

MODEL	QT-10	QT-15	QT-20	QT-30	QT-40	QT-50	QT-60	QT-80	QT-90	QT-100	QT-200
最大输出扭矩 Max output torque	100	150	200	300	150	400	500	600	800	1000	2000
90°动作时间 90°Action time	18/22	18/22	21/25	21/25	26/31	26/31	26/31	26/31	31/37	31/37	93/112
电机功率 Motor Power	25	40	40	60	90	90	120	120	180	200	200
额定电流(A) Rated current	AC220V	0.55	0.9	0.9	1.0	1.2	1.2	1.9	1.9	2.4	2.6
	AC380V	≤0.1	≤0.1	≤0.1	0.3	0.55	0.55	0.6	0.6	1.2	1.4
手轮转数 Handwheel Revolution	10	10	11	11	14	14	14	18	18	18	50

标准规格

Standard specification

外壳 Housing	防水级别IP67, NEMA 4 and 6 Waterproof level IP67, NEMA 4 and 6	
电源 Voltage Options	标准: 220VAC单相 50/60Hz ±10% 可选: 380VAC三相 50/60Hz ±10% Standard: 220VAC single-phase 50/60Hz, ±10% Optional: 380V AC three-phase, 50/60Hz, ±10%	
电机 Motor	鼠笼式异步电机 Squirrel-cage asynchronous motor	
限位开关 Limit Switch	开关, 各1个 SPDT AC250V/16A On/off, each of the 1 SPDT AC250V/16A	
辅助限位开关 Auxiliary Limit Switch	开关, 各1个 SPDT AC250V/16A On/off, each of the 1 SPDT AC250V/16A	
扭矩开关 Torque Switch	开关, 各1个 SPDT AC250V/16A On/off, each of the 1 SPDT AC250V/16A	QT-010 除外 QT-010 Excluded
行程 Itineraries	90°±10°	0°~270° 可选 0°~270° Optional
失速防护/操作温度 Stall Protection/ operating temperature	内置过热保护, 开115°C±5°C / 关97°C±5°C Built-in overheating protection, open 115°C±5°C / Close 97°C±5°C	
指示器 Indicator	连续的位置指示刻度 Continuous position indicator scale	
手动操作 Manual operation	机械离合机构, 配手轮操作 Mechanical clutch mechanism, with handwheel operation	
自锁装置 Self-locking device	蜗轮, 蜗杆机构提供自锁 Worm gear, self-locking provided for the worm mechanism	
机械限位 Mechanical limit	2个外部调整螺栓 Two external adjusting bolts	
干燥器 Desiccator	25W (110/220VAC)	
接线孔 Connection Hole	2 PCS PF 3/4"	
环境温度 Ambient temperature	-20°C~+70°C	
润滑 Lubrication	铝基润滑脂 (EP型) Aluminium-base grease (EP type)	
材料 Materials	钢, 铝合金, 铝青铜, 聚碳酸酯 Steel/aluminum alloy/aluminum bronze/polycarbonate	
环境湿度 Ambient humidity	最大 90% RH非凝结 Maximum 90% RH non-condensing	
抗震性能 Aseismic performance	X Y Z 10g, 0.2-34 Hz, 30 分钟 X Y Z 10g, 0.2-34 Hz, Minutes	
外涂层 External coating	干粉, 环氧聚酯, 具有超强防腐功能 Dry powder/epoxypolyester, with a superior anti-corrosion function	

防爆电动执行器的结构组成

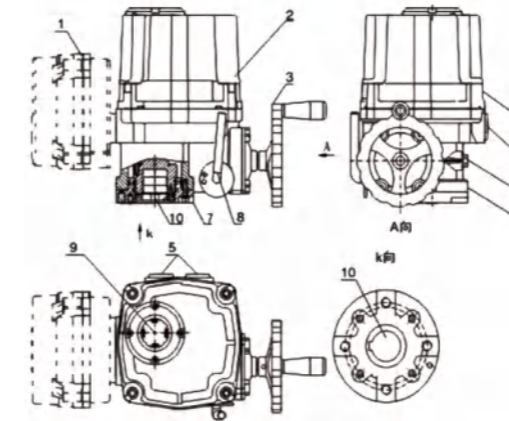
Structure composition

防爆电动执行器主要由以下几部分组成:

壳体部分: 包括外壳及底座部分,
驱动部分: 以高性能全封闭阻笼式电机为动力源,
传动机构: 双蜗轮与离合器部分,
比例控制部分: 与机械部分分离, 提高可靠性,
力矩开关与限位开关部分,
开度检测与反馈部分。

The electric actuator mainly consists of the following parts:

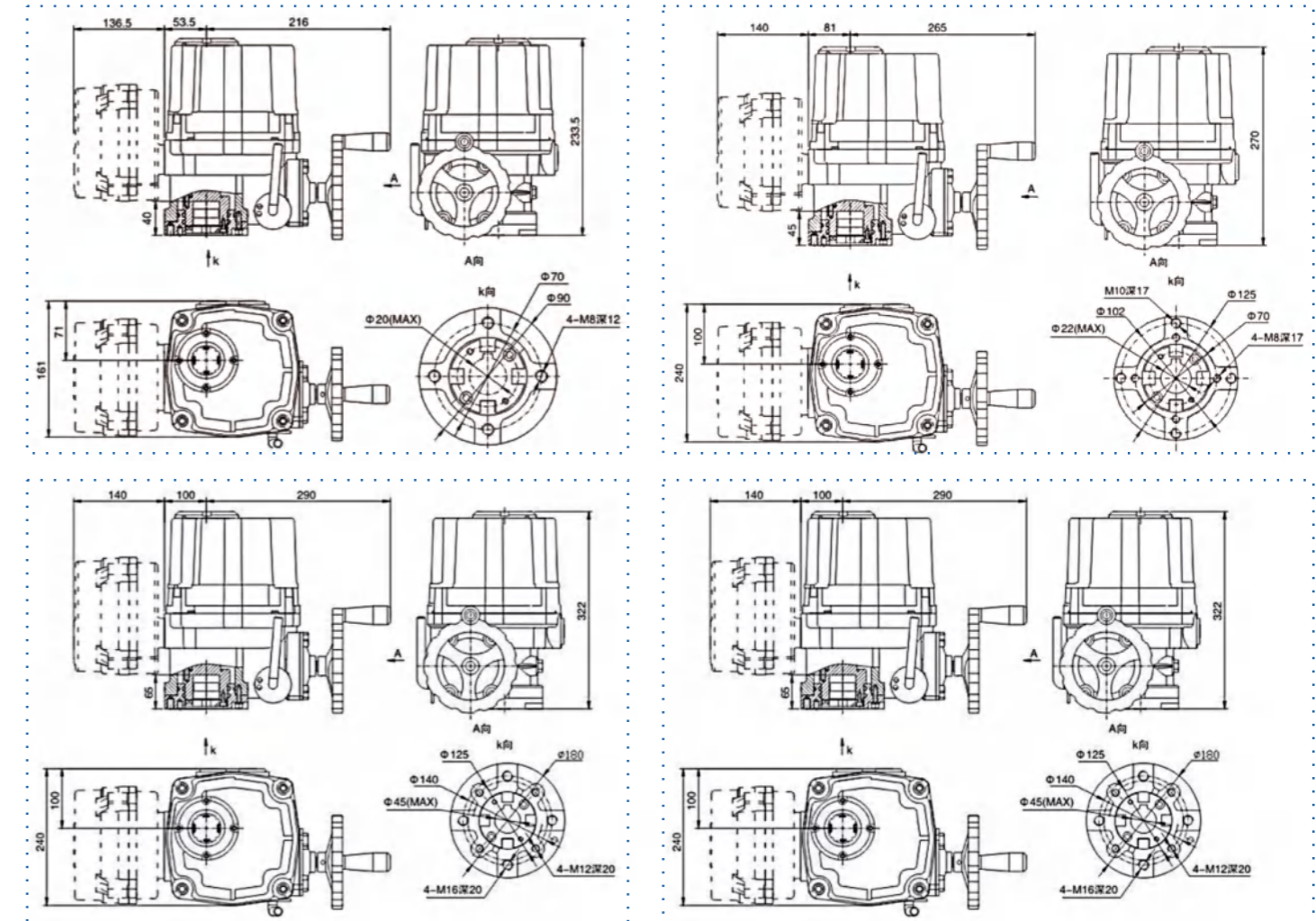
Housing part: including housing and base;
Driving part: powered by a high-performance fully-enclosed squirrel-cage motor;
Transmission mechanism: double worm gear and clutch;
Proportional control part: isolated from the mechanical part to improve reliability;
Torque switch and limit switch part;
Opening detection and feedback part.



1	控制室 Control room
2	外罩 Enclosure
3	手轮 Handwheel
4	壳体 Housing
5	线缆接入插头 Cable connection plug
6	机械限位螺钉 Mechanical limit screw
7	连接法兰 Connecting flange
8	离合器手柄 Clutch handle
9	视窗 Window
10	输出轴 Output shaft

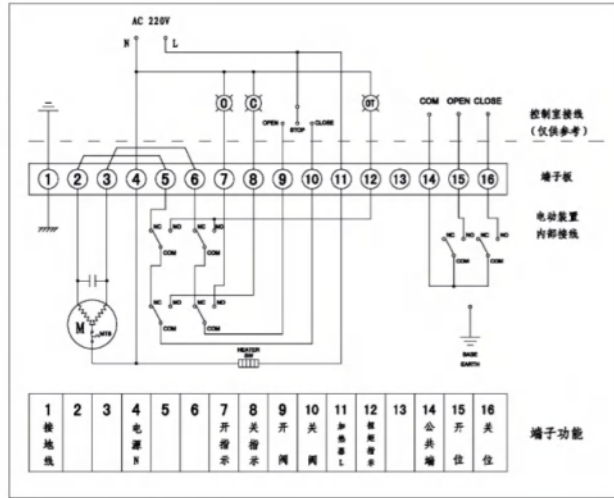
防爆电动执行器外形尺寸图

Outline Dimension Drawing of actuator

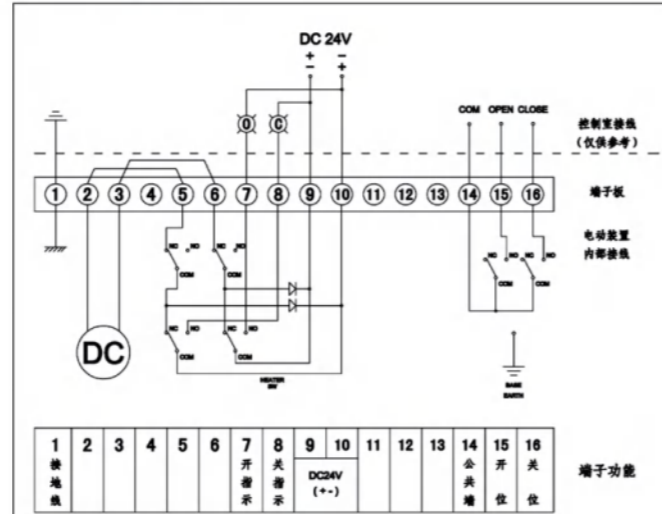


防爆电动执行器接线图
Wiring Diagrams

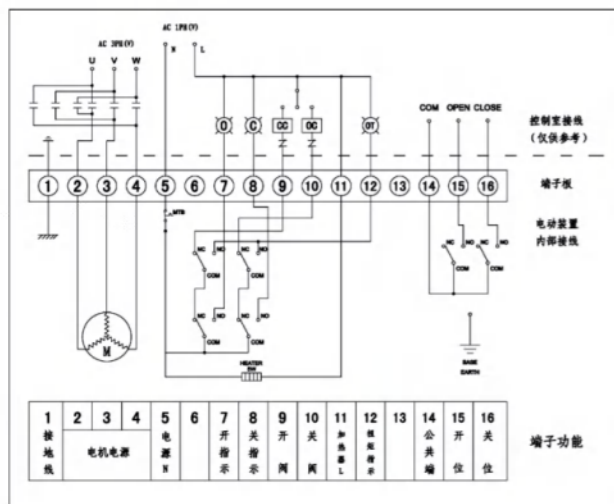
AC220V 防爆标准开关型



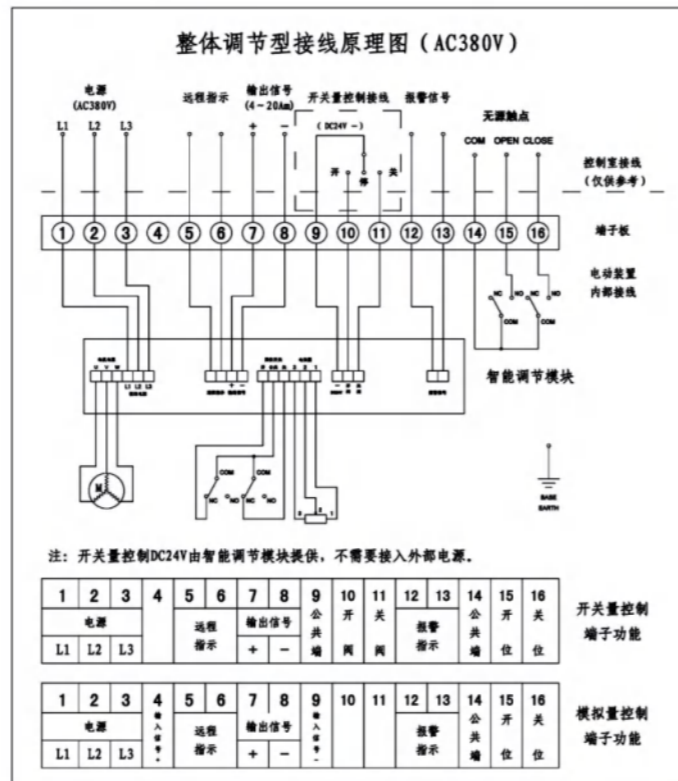
DC24V 防爆标准开关型



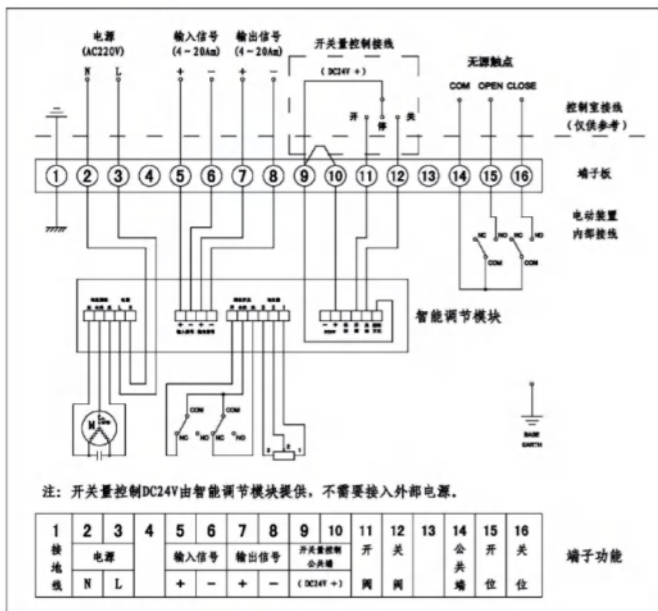
AC380V 防爆标准开关型



AC380V 防爆整体型



AC220V 防爆整体型



电动球阀
Electric Ball Valves



电动三片式球阀

VE10-B-PCS VINCER Electric 3-Piece Ball Valve



电动法兰球阀

VE10-B-F VINCER Electric Flanged Ball Valve



电动塑料球阀

VE10-B-P Vincer Electric Plastic Ball Valve



电动卫生级球阀

VE10-B-K Vincer Electric 2-Way Clamp Ball Valve



电动高压球阀

VE10-B-H Vincer Electric High-Pressure 2-Way Ball Valve



电动薄型球阀

VE10-B-I Vincer Electric Italian Thin Ball Valve

伟赛尔电动球阀

ELECTRIC BALL VALVES

电动三片式球阀

VE10-B-3PCS VINCER ELECTRIC 3-PIECE BALL VALVE

3片式球阀结构为你带来易于维护的阀门解决方案，延长使用寿命。
The 3-piece ball valve structure provides you with an easy-to-maintain valve solution that extends service life.



技术规范 Technical Parameter

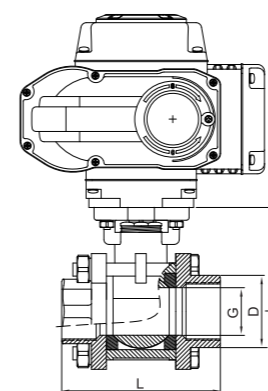
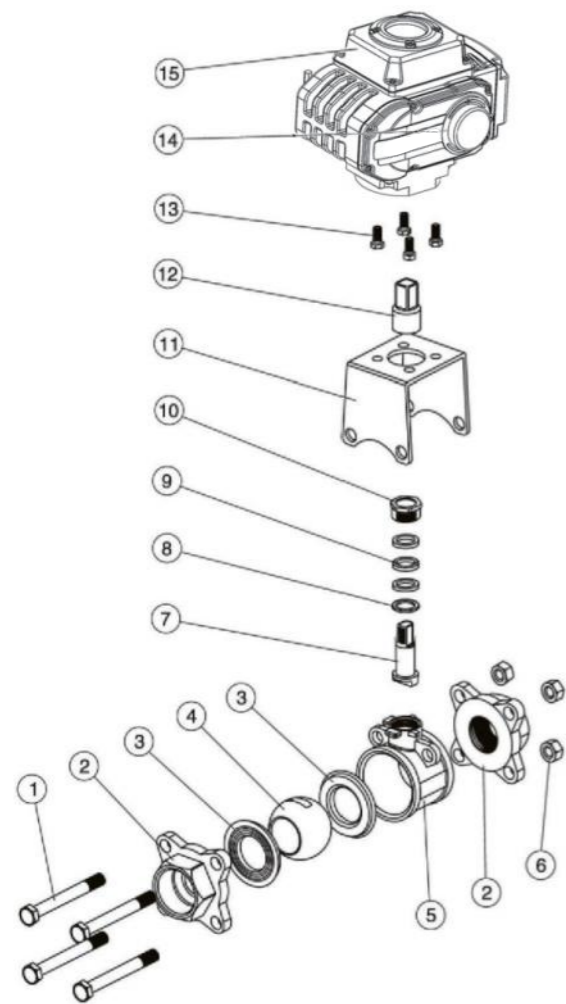
- 设计标准 Design Standard: GB/T 12237
- 试验和检验 Test & Inspection: GB/T 26480

优势 Advantage

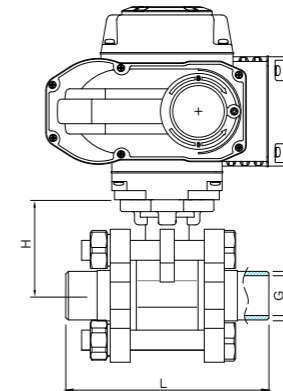
高密封性，耐高压，长寿命
High sealing, High pressure resistance, Long working life

主要零件材质表 Main Parts Materials

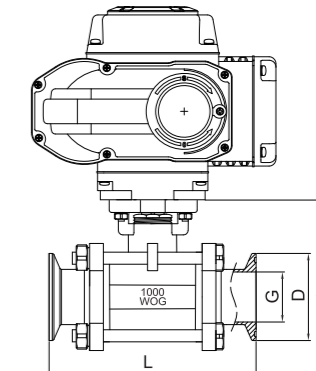
序号 No.	零件名称 Component	材质 Material
1	螺栓 Screw	不锈钢304 Stainless Steel 304
2	接头 Connector	不锈钢CF8、CF8M、CF3、CF3M Stainless Steel CF8、CF8M、CF3、CF3M
3	阀座 Seat	PTFE、尼龙(Nylon)、对位聚苯(PPL) 硬质合金(H/Y)
4	球体 Ball	不锈钢304、304L、316、316L Stainless Steel 304、304L、316、316L
5	阀体 Body	不锈钢CF8、CF8M、CF3、CF3M Stainless Steel CF8、CF8M、CF3、CF3M
6	螺母 Nut	不锈钢304 Stainless Steel 304
7	阀杆 Stem	不锈钢304、304L、316、316L Stainless Steel 304、304L、316、316L
8	垫片 Gasket	不锈钢304、316L Stainless Steel 304、316L
9	填料 Packing	PTFE
10	压盖 Gland	不锈钢304、316L Stainless Steel 304、316L
11	连接支架 Connecting Yoke	不锈钢CF8 Stainless Steel CF8
12	连接套 Connecting Set	不锈钢304 Stainless Steel 304
13	螺栓 Screw	不锈钢304 Stainless Steel 304
14	手动装置 Hand Gear	塑料 Plastic
15	电动装置 Electric Actuator	开关型、调节型、多回转型、防爆型 ON/OFF、Regulation、Multi-Turn、Explosion-Proof



螺纹型 Threaded Type



焊接型 Welded Type



卡箍型 Clamped Type

螺纹型主要外形及连接尺寸 Threaded Type Main Outline and Connecting Size

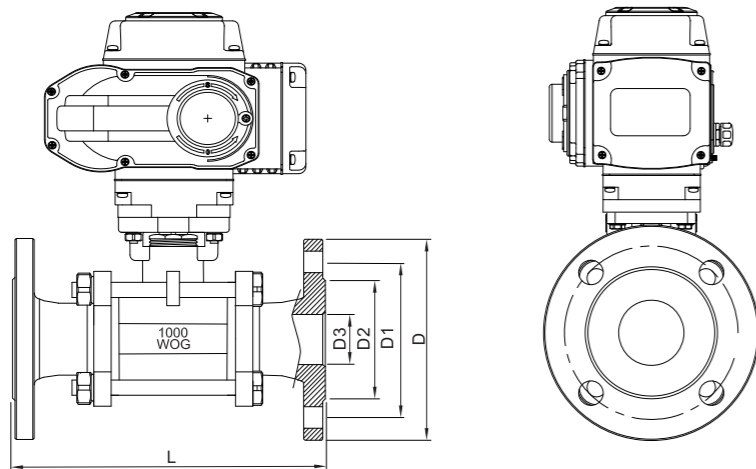
SIZE	DN08	DN10	DN15	DN20	DN25	DN32	DN40	DN50	DN65	DN80	DN100
G	1/4"	3/8"	1/2"	3/4"	1"	1-1/4"	1-1/2"	2"	2-1/2"	3"	4"
D	11.2	12.5	15	20	25	32	40	50	65	80	100
L	60	60	72	82	90	112	120	145	185	210	268
H	42	42	42	48.5	58.5	63	71	78	100	109	140

焊接型主要外形及连接尺寸 Welded Type Main Outline and Connecting Size

SIZE	DN08	DN10	DN15	DN20	DN25	DN32	DN40	DN50	DN65	DN80	DN100
G	1/4"	3/8"	1/2"	3/4"	1"	1-1/4"	1-1/2"	2"	2-1/2"	3"	4"
D	12.5	17.5	22	27	34	42.5	48.5	61	73	90	115
L	65	65	75	83	90	113	115	140	160	180	215
H	33	34	38	45	55	60	70	85	100	112	140

卡箍型主要外形及连接尺寸 Clamped Type Main Outline and Connecting Size

SIZE	DN15	DN20	DN25	DN32	DN40	DN50	DN65	DN80	DN100
G	1/2"	3/4"	1"	1-1/4"	1-1/2"	2"	2-1/2"	3"	4"
D	34/50.5	34/50.5	50.5	50.5	50.5	64	77/91	91/106	119
L	100	100	120	130	140	156	196	228	242
H	55	60	70	82	90	105	120	132	158



电动法兰球阀

VE10-B-F VINCER ELECTRIC FLANGED BALL VALVE

法兰球阀链接为你带来易于安装且牢固的链接方案，适用性广。
Flange ball valve connection provides you with an easy-to-install and strong connection solution with wide applicability.



技术规范 Technical Parameter

- 设计标准 Design Standard: GB/T 12237、API 608、API 6D
- 结构长度 Face To Face Dimension: GB/T 12221、ASME B16.10、API 6D
- 连接法兰尺寸 Connecting Flange Size: GB/T 9113、HG20592、JB/T 79、GB/T 12224、ASME B16.5、ASME B16.47、ASME B16.11、ASME B16.25
- 试验和检验 Test & Inspection: JB/T 9092、GB/T 26480、API598、API 6D

优势 Advantage

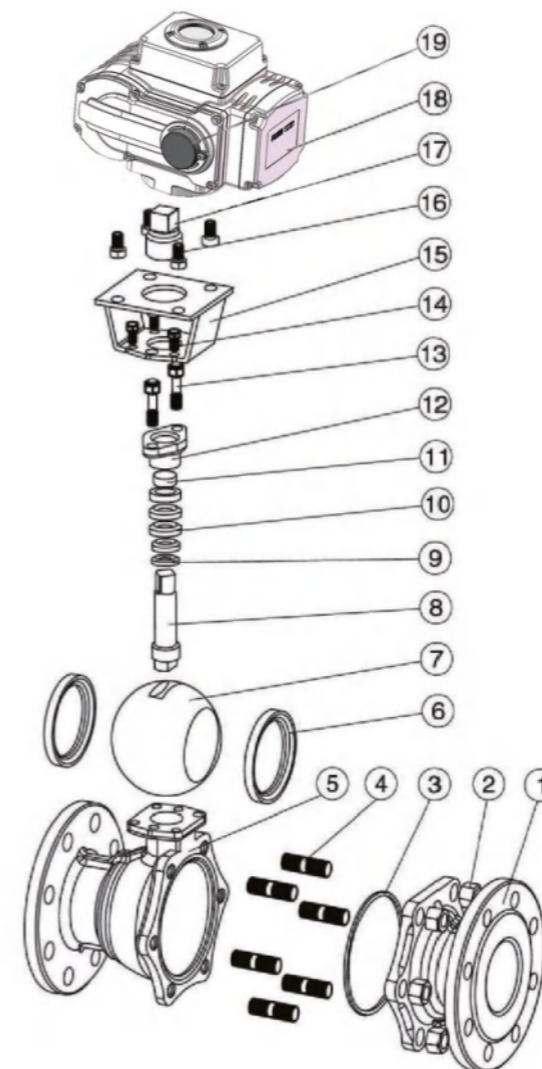
自动化控制，稳定性强，耐腐蚀
Automatic control, Strong stability, Corrosion resistance

法兰型主要外形及连接法兰尺寸GB-PN16 Flange Type Main Outline and Connecting Flange Size

MEDLE	DN15	DN20	DN25	DN32	DN40	DN50	DN65	DN80	DN100	DN125	DN150
G	1/2"	3/4"	1"	1-1/4"	1-1/2"	2"	2-1/2"	3"	4"	5"	6"
D3	15	20	25	30	40	50	65	80	100	125	150
D2	45	58	65	78	88	102	122	138	158	185	210
D1	65	75	85	100	110	125	145	160	180	210	240
D	95	105	115	140	150	165	185	200	220	250	285
L	130	150	160	180	200	230	250/290	280/310	320/350	400	480
n-φd	4-φ14	4-φ14	4-φ14	4-φ18	4-φ18	4-φ18	4-φ18	4-φ18	8-φ18	8-φ18	8-φ23

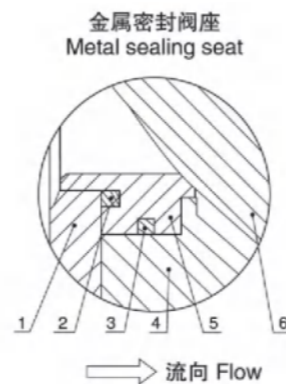
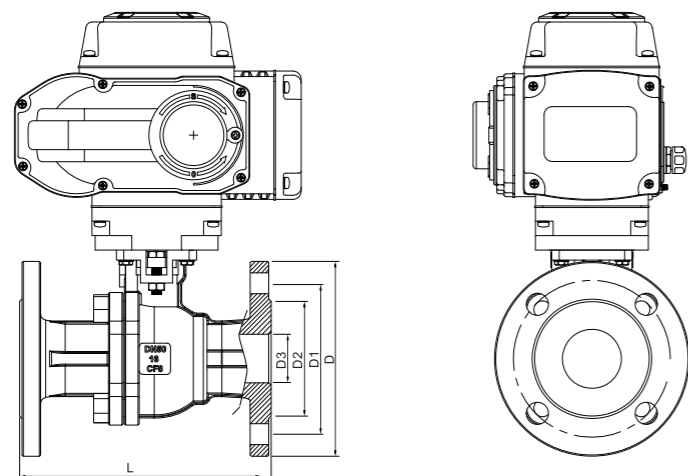
法兰型主要外形及连接法兰尺寸ANSI-Class150 Flange Type Main Outline and Connecting Flange Size

MEDLE	DN15	DN20	DN25	DN32	DN40	DN50	DN65	DN80	DN100	DN125	DN150
G	1/2"	3/4"	1"	1-1/4"	1-1/2"	2"	2-1/2"	3"	4"	5"	6"
D3	15	20	25	30	40	50	65	80	100	125	150
D2	34.9	42.9	50.8	63.5	73	92.1	104.8	127	157.2	185.7	215.9
D1	60.4	69.9	79.4	88.9	98.4	120.7	139.7	152.4	190.5	215.9	241.3
D	89	98	108	117	127	152	178	190	229	255	280
L	130	150	160	180	200	230	250/290	280/310	320/350	400	480
n-φd	4-φ16	4-φ16	4-φ16	4-φ16	4-φ16	4-φ19	4-φ19	4-φ19	4-φ19	8-φ22	8-φ22

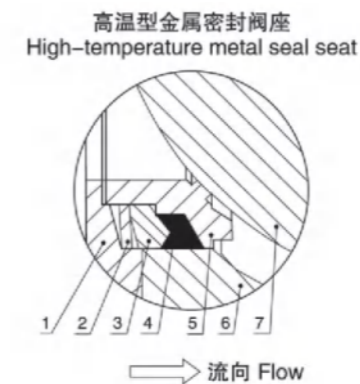


主要零件材质表 Main Parts Materials

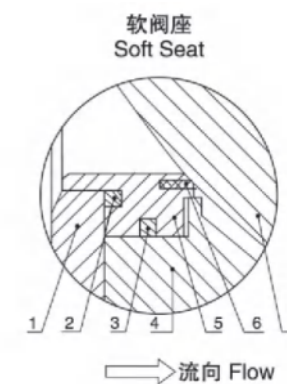
序号 No.	零件名称 Component	材质 Material		
		C	P	R
1	右阀体 Right valve	A216-WCB	A351-CF8	A351-CF8M
2	螺母 Nut	A194-2H	A276-304	A276-316
3	垫片 Gasket	PTFE、石墨金属复合垫 Graphite Metal Composite Pad		
4	螺栓 Screw	A193-B7	A276-304	A276-316
5	阀体 Body	A216-WCB	A351-CF8	A351-CF8M
6	阀座 Seat	PTFE、尼龙(Nylon)、对位聚苯(PPL) 硬质合金Hard Alloy		
7	球体 Bal	A182-F304	A182-F304	A182-F316
8	阀杆 Stem	A276-410	A276-410	A276-316
9	垫片 Gasket	A276-304	A276-304	A276-316
10	填料 Packing	PTFE、柔性石墨 Flexibile Graphite		
11	衬套 Bushing	PTFE复合轴承 Composite Bearings		
12	压盖 Gland	A216-WCB	A351-CF8	A351-CF8M
13	螺栓 Screw	A194-2H	A276-304	A276-304
14	螺栓 Screw	A194-2H	A276-304	A276-304
15	连接支架 Connecting Yoke	A351-CF8	A351-CF8	A351-CF8
16	螺栓 Screw	A194-2H	A276-304	A276-304
17	连接套 Connecting Set	A351-CF8	A351-CF8	A351-CF8
18	电动装置 Electric Actuator	开关型、调节型、多回转型、防爆型 ON/OFF、Regulation、Multi-Turn、Explosion-Proof		
19	手动装置 Hand Gear	塑料 Plastic		



金属密封阀座
Metal sealing seat
温度范围 -20~160°C/230°C
Temperature Range



高温型金属密封阀座
High-temperature metal seal seat
温度范围 -20~425°C
Temperature Range



软阀座
Soft Seat
温度范围 -20~160°C
Temperature Range

主要外形及连接法兰尺寸GB-PN16 Main Outline and Connecting Flange Size

MEDLE	DN15	DN20	DN25	DN32	DN40	DN50	DN65	DN80	DN100	DN125	DN150	DN200
G	1/2"	3/4"	1"	1-1/4"	1-1/2"	2"	2-1/2"	3"	4"	5"	6"	8"
D3	15	20	25	30	40	50	65	80	100	125	150	200
D2	45	55	65	78	85	100	120	135	155	185	210	265
D1	65	75	85	100	110	125	145	160	180	210	240	295
D	95	105	115	135	145	160	180	195	215	245	280	335
L	130	130	140	165	165	203	222	241	280	320	360	457
n-φd	4-φ14	4-φ14	4-φ14	4-φ18	4-φ18	4-φ18	4-φ18	8-φ18	8-φ18	8-φ18	8-φ23	12-φ23

主要外形及连接法兰尺寸GB-PN40 Main Outline and Connecting Flange Size

MEDLE	DN15	DN20	DN25	DN32	DN40	DN50	DN65	DN80	DN100	DN125	DN150	DN200
G	1/2"	3/4"	1"	1-1/4"	1-1/2"	2"	2-1/2"	3"	4"	5"	6"	8"
D3	15	20	25	30	40	50	65	80	100	125	150	200
D2	45	55	65	78	85	100	120	135	160	188	218	282
D1	65	75	85	100	110	125	145	160	190	220	250	320
D	95	105	115	135	145	160	180	195	230	270	300	375
L	140	152	165	178	190	216	241	283	305	381	403	419
n-φd	4-φ14	4-φ14	4-φ14	4-φ18	4-φ18	4-φ18	8-φ18	8-φ18	8-φ23	8-φ25	8-φ25	12-φ34

主要外形及连接法兰尺寸GB-PN25 Main Outline and Connecting Flange Size

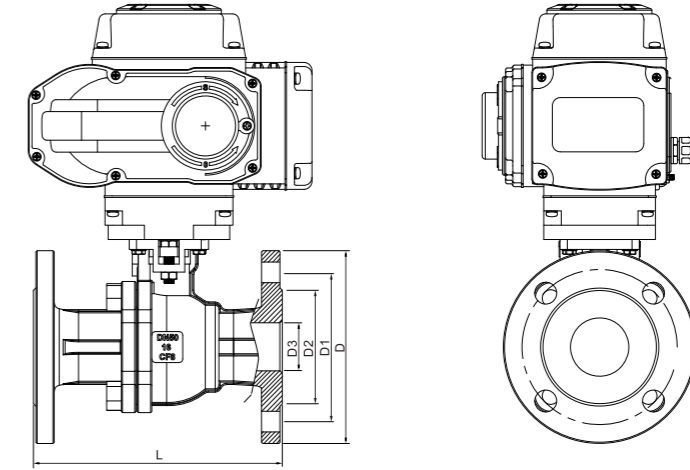
MEDLE	DN15	DN20	DN25	DN32	DN40	DN50	DN65	DN80	DN100	DN125	DN150	DN200
G	1/2"	3/4"	1"	1-1/4"	1-1/2"	2"	2-1/2"	3"	4"	5"	6"	8"
D3	15	20	25	30	40	50	65	80	100	125	150	200
D2	45	55	65	78	85	100	120	135	160	190	220	250
D1	65	75	85	100	110	125	145	160	190	220	250	310
D	95	105	115	140	150	160	180	195	230	270	300	360
L	130	130	140	165	165	203	222	241	280	320	360	457
n-φd	4-φ14	4-φ14	4-φ14	4-φ18	4-φ18	4-φ18	8-φ18	8-φ18	8-φ23	8-φ25	8-φ25	12-φ25

主要外形及连接法兰尺寸GB-PN63 Main Outline and Connecting Flange Size

MEDLE	DN15	DN20	DN25	DN32	DN40	DN50	DN65	DN80	DN100	DN125	DN150	DN200
G	1/2"	3/4"	1"	1-1/4"	1-1/2"	2"	2-1/2"	3"	4"	5"	6"	8"
D3	15	20	25	30	40	50	65	80	100	125	150	200
D2	55	68	78	82	95	105	130	140	168	202	240	300
D1	75	90	100	110	125	135	160	170	200	240	280	345
D	105	125	135	150	165	175	200	210	250	295	340	405
L	140	152	165	178	190	216	241	283	305	381	403	419
n-φd	4-φ14	4-φ18	4-φ18	4-φ23	4-φ23	4-φ23	8-φ23	8-φ23	8-φ25	8-φ30	8-φ34	12-φ34

主要外形及连接法兰尺寸ANSI-150# Main Outline and Connecting Flange Size

MEDLE	DN15	DN20	DN25	DN32	DN40	DN50	DN65	DN80	DN100	DN125	DN150	DN200	DN250
G	1/2"	3/4"	1"	1-1/4"	1-1/2"	2"	2-1/2"	3"	4"	5"	6"	8"	10"
D3	15	20	25	30	40	50	65	80	100	125	150	200	250
D2	34.9	42.9	50.8	63.5	73	92.1	104.8	127	157.2	185.7	215.9	269.9	323.8
D1	60.3	69.9	79.4	88.9	98.4	120.7	139.7	152.4	190.5	215.9	241.3	298.5	362
D	90	100	110	115	125	150	180	190	230	255	280	345	405
L	108	117	127	140	165	178	190	203	229	356	394	457	533
b	11.5	13	14.5	16	17.5	19.5	22.5	24	24	24	25.5	29	30.5
n-φd	4-φ16	4-φ16	4-φ16	4-φ16	4-φ16	4-φ19	4-φ19	4-φ19	4-φ19	8-φ22	8-φ22	8-φ22	12-φ25



主要外形及连接法兰尺寸ANSI-300# Main Outline and Connecting Flange Size

MEDLE	DN15	DN20	DN25	DN32	DN40	DN50	DN65	DN80	DN100	DN125	DN150	DN200	DN250
G	1/2"	3/4"	1"	1-1/4"	1-1/2"	2"	2-1/2"	3"	4"	5"	6"	8"	10"
D3	15	20	25	30	40	50	65	80	100	125	150	200	250
D2	34.9	42.9	50.8	63.5	73	92.1	104.8	127	157.2	185.7	215.9	269.9	323.8
D1	66.7	82.6	88.9	98.4	114.3	127	149.2	168.3	200	235	269.9	330.2	387.4
D	95	115	125	135	155	165	190	210	255	280	320	380	445
L	140	152	165	178	190	216	241	282	305	381	403	502	568
b	14.5	16	17.5	19.5	21	22.5	25.5	29	32	35	37	41.5	48
n-φd	4-φ16	4-φ19	4-φ19	4-φ19	4-φ22	8-φ19	8-φ22	8-φ22	8-φ22	8-φ22	12-φ22	12-φ25	16-φ29

主要外形及连接法兰尺寸JIS-10K Main Outline and Connecting Flange Size

MEDLE	DN15	DN20	DN25	DN32	DN40	DN50	DN65	DN80	DN100	DN125	DN150	DN200	DN250
G	1/2"	3/4"	1"	1-1/4"	1-1/2"	2"	2-1/2"	3"	4"	5"	6"	8"	10"
D3	15	20	25	30	40	50	65	80	100	125	150	200	250
D2	52	58	70	80	85	100	120	130	155	185	215	265	325
D1	70	75	90	100	105	120	140	150	175	210	240	290	355
D	95	100	125	135	140	155	175	185	210	250	280	330	400
L	108	117	127	140	165	178	190	203	229	330/356	340/394	450/457	533
b	12	14	14	16	16	16	18	18	18	20	22	22	24
n-φd	4-φ15	4-φ15	4-φ19	4-φ19	4-φ19	4-φ19	4-φ19	8-φ19	8-φ19	8-φ23	8-φ23	12-φ23	12-φ25

主要外形及连接法兰尺寸ANSI-600# Main Outline and Connecting Flange Size

MEDLE	DN15	DN20	DN25	DN32	DN40	DN50	DN65	DN80	DN100	DN125	DN150	DN200	DN250
G	1/2"	3/4"	1"	1-1/4"	1-1/2"	2"	2-1/2"	3"	4"	5"	6"	8"	10"
D3	15	20	25	30	40	50	65	80	100	125	150	200	250
D2	34.9	42.9	50.8	63.5	73	92.1	104.8	127	157.2	185.7	215.9	269.9	323.8
D1	66.7	82.6	88.9	98.4	114.3	127	149.2	168.3	215.9	266.7	292.1	349.2	431.8
D	95	115	125	135	155	165	190	210	275	330	355	420	510
L	165	190	216	229	241	292	330	356	432	508	559	660	787
b	21	23	24	27.5	29	32	35	38.5	45	51.5	54.5	62	70
n-φd	4-φ16	4-φ19	4-φ19	4-φ19	4-φ22	8-φ19	8-φ22	8-φ22	8-φ25	8-φ29	12-φ29	12-φ32	16-φ35

主要外形及连接法兰尺寸JIS-20K Main Outline and Connecting Flange Size

MEDLE	DN15	DN20	DN25	DN32	DN40	DN50	DN65	DN80	DN100	DN125	DN150	DN200	DN250
G	1/2"	3/4"	1"	1-1/4"	1-1/2"	2"	2-1/2"	3"	4"	5"	6"	8"	10"
D3	15	20	25	30	40	50	65	80	100	125	150	200	250
D2	52	58	70	80	85	100	120	135	160	195	230	275	345
D1	70	75	90	100	105	120	140	160	185	225	260	305	380
D	95	100	125	135	140	155	175	200	225	270	305	350	430
L	140	152	165	178	190	216	241	282	305	381	403	502	568
b	14	16	16	18	18	18	20	22	24	26	28	30	34
n-φd	4-φ15	4-φ15	4-φ19	4-φ19	4-φ19	8-φ19	8-φ19	8-φ23	8-φ23	8-φ25	12-φ25	12-φ25	12-φ27

主要外形及连接法兰尺寸 DIN-PN(16bar) Main Outline and Connecting Flange Size

MEDLE	DN15	DN20	DN25	DN32	DN40	DN50	DN65	DN80	DN100	DN125	DN150	DN200
G	1/2"	3/4"	1"	1-1/4"	1-1/2"	2"	2-1/2"	3"	4"	5"	6"	8"
D3	15	20	25	30	40	50	65	80	100	125	150	200
D2	45	58	68	78	85	102	122	138	158	188	212	268
D1	65	75	85	100	110	125	145	160	180	210	240	295
D	95	105	115	140	150	165	185	200	220	250	285	340
L	115	120	125	130	140	150	170	180	190	325	350	400
b	16	18	18	18	18	20	20	20	20	22	22	24
n-φd	4-φ14	4-φ14	4-φ14	4-φ18	4-φ18	4-φ18	4-φ18	8-φ18	8-φ18	8-φ18	8-φ22	12-φ22

主要外形及连接法兰尺寸DIN-PN(25bar) Main Outline and Connecting Flange Size

MEDLE	DN15	DN20	DN25	DN32	DN40	DN50	DN65	DN80	DN100	DN125	DN150	DN200
G	1/2"	3/4"	1"	1-1/4"	1-1/2"	2"	2-1/2"	3"	4"	5"	6"	8"
D3	15	20	25	30	40	50	65	80	100	125	150	200
D2	45	58	68	78	88	102	122	138	162	188	218	278
D1	65	75	85	100	110	125	145	160	190	220	250	310
D	95	105	115	140	150	165	185	200	235	270	300	360
L	115	120	125	130	140	150	170	180	190	325	350	400
b	16	18	18	18	18	20	22	24	24	26	28	30
n-φd	4-φ14	4-φ14	4-φ14	4-φ18	4-φ18	4-φ18	8-φ18	8-φ18	8-φ22	8-φ26	8-φ26	12-φ26

主要外形及连接法兰尺寸 DIN-PN(40bar) Main Outline and Connecting Flange Size

MEDLE	DN15	DN20	DN25	DN32	DN40	DN50	DN65	DN80	DN100	DN125	DN150	DN200
G	1/2"	3/4"	1"	1-1/4"	1-1/2"	2"	2-1/2"	3"	4"	5"	6"	8"
D3	15	20	25	30	40	50	65	80	100	125	150	200
D2	45	55	65	78	85	100	120	135	160	188	218	282
D1	65	75	85	100	110	125	145	160	190	220	250	320
D	95	105	115	135	145	160	180	195	230	270	300	375
L	115	120	125	130	140	150	170	180	190	325	350	400
b	16	18	18	18	18	20	22	24	24	26	28	30
n-φd	4-φ14	4-φ14	4-φ14	4-φ18	4-φ18	4-φ18	8-φ18	8-φ18	8-φ23	8-φ25	8-φ25	12-φ34

电动三通法兰球阀

VE10-B-F3 VINCER ELECTRIC 3-WAY FLANGED BALL VALVE

电动三通法兰球阀为您提供专业的流量控制解决方案。
Electric three-way flange ball valve offers you professional flow control solutions.

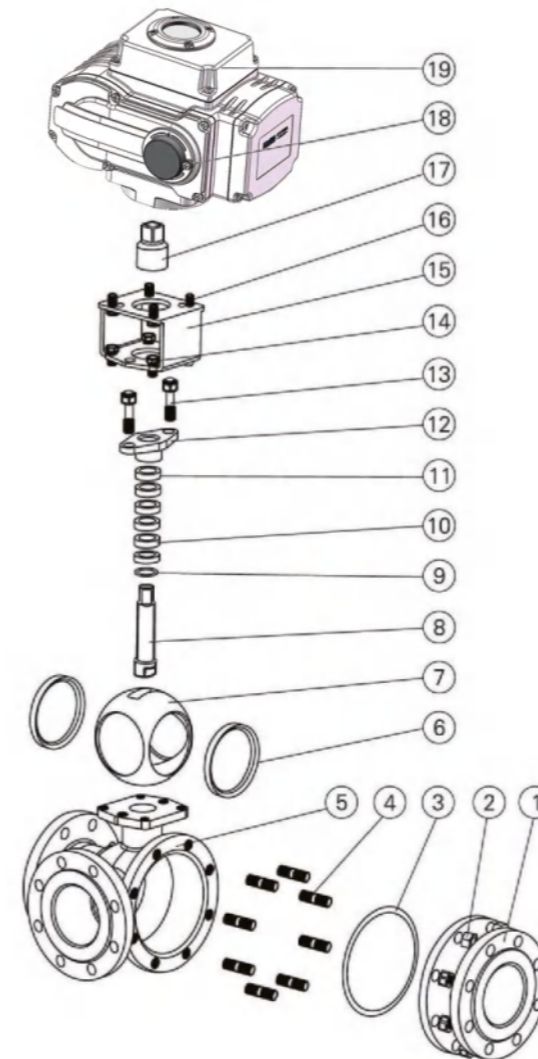


技术规范 Technical Parameter

- 设计标准 Design Standard: GB/T 12237、API 608、API 6D
- 结构长度 Face To Face Dimension: GB/T 12221、ASME B16.10、API 6D
- 连接法兰尺寸 Connecting Flange Size: GB/T 9113、HG20592、JB/T 79、GB/T 12224、ASME B16.5、ASME B16.47、ASME B16.11、ASME B16.25
- 试验和检验 Test & Inspection: JB/T 9092、GB/T 26480、API598、API 6D

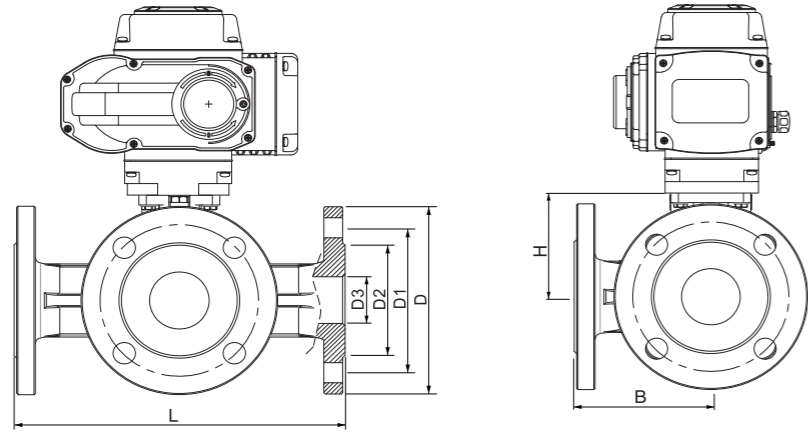
优势 Advantage

多功能性，自动化控制，耐腐蚀
Versatility, Automated control, Corrosion resistance



主要零件材质表 Main Parts Materials

序号 No.	零件名称 Component	材质 Material		
		C	P	R
1	右阀体 Right valve	WCB	ZG1Cr18Ni9Ti	ZG1Cr18Ni12Mo2Ti
2	螺母 Nut	35	1Cr18Ni9Ti	1Cr18Ni9Ti
3	垫片 Gasket	PTFE、石墨金属复合垫 Graphite Metal Composite Pad		
4	螺栓 Screw	35	1Cr18Ni9Ti	1Cr18Ni9Ti
5	阀体 Body	WCB	ZG1Cr18Ni9Ti	ZG1Cr18Ni12Mo2Ti
6	阀座 Seat	PTFE、尼龙(Nylon)、对位聚苯(PPL) 硬质合金Hard Alloy		
7	球体 Bal	1Cr18Ni9Ti	1Cr18Ni9Ti	1Cr1812Mo2Ti
8	阀杆 Stem	1Cr13	1Cr18Ni9Ti	1Cr1812Mo2Ti
9	垫片 Gasket	1Cr18Ni9Ti	1Cr18Ni9Ti	1Cr1812Mo2Ti
10	填料 Packing	PTFE、柔性石墨 Flexible Graphite		
11	衬套 Bushing	PTFE复合轴承 Composite Bearings		
12	压盖 Gland	WCB	ZG1Cr18Ni9Ti	ZG1Cr18Ni12Mo2Ti
13	螺栓 Screw	35	1Cr18Ni9Ti	1Cr18Ni9Ti
14	螺栓 Screw	35	1Cr18Ni9Ti	1Cr18Ni9Ti
15	连接支架 Connecting Yoke	1Cr18Ni9Ti	1Cr18Ni9Ti	1Cr18Ni9Ti
16	螺栓 Screw	35	1Cr18Ni9Ti	1Cr18Ni9Ti
17	连接套 Connecting Set	1Cr18Ni9Ti	1Cr18Ni9Ti	1Cr18Ni9Ti
18	手动装置 Hand Gear	塑料 Plastic		
19	电动装置 Electric Actuator	开关型、调节型、多回转型、防爆型 ON/OFF、Regulation、Multi-Turn、Explosion-Proof		



主要外形及连接法兰尺寸GB-PN16 Main Outline and Connecting Flange Size

MEDLE	DN15	DN20	DN25	DN32	DN40	DN50	DN65	DN80	DN100	DN125	DN150	DN200
G	1/2"	3/4"	1"	1-1/4"	1-1/2"	2"	2-1/2"	3"	4"	5"	6"	8"
D3	15	20	25	30	40	50	65	80	100	125	150	200
D2	45	55	65	78	85	100	120	135	155	185	210	265
D1	65	75	85	100	110	125	145	160	180	210	240	295
D	95	105	115	135	145	160	180	195	215	245	280	335
L	150	164	180	200	220	240	260	280	320	380	440	550
H	53	58.5	70	77.5	88.5	92	107	119	150	200	240	300
B	72	80	90	100	110	120	130	140	160	190	220	260
n-φd	4-φ14	4-φ14	4-φ14	4-φ18	4-φ18	4-φ18	4-φ18	8-φ18	8-φ18	8-φ18	8-φ18	12-φ23

主要外形及连接法兰尺寸GB-PIN25 Main Outline and Connecting Flange Size

MEDLE	DN15	DN20	DN25	DN32	DN40	DN50	DN65	DN80	DN100	DN125	DN150	DN200
G	1/2"	3/4"	1"	1-1/4"	1-1/2"	2"	2-1/2"	3"	4"	5"	6"	8"
D3	15	20	25	30	40	50	65	80	100	125	150	200
D2	45	55	65	78	85	100	120	135	160	190	220	250
D1	65	75	85	100	110	125	145	160	190	220	250	310
D	95	105	115	140	150	160	180	195	230	270	300	360
L	150	164	180	200	220	240	260	280	320	380	440	550
H	53	58.5	70	77.5	88.5	92	107	119	150	200	240	300
B	72	80	90	100	110	120	130	140	160	190	220	260
n-φd	4-φ14	4-φ14	4-φ14	4-φ18	4-φ18	4-φ18	8-φ18	8-φ18	8-φ23	8-φ25	8-φ25	12-φ25

主要外形及连接法兰尺寸ANSI-Class150 Main Outline and Connecting Flange Size

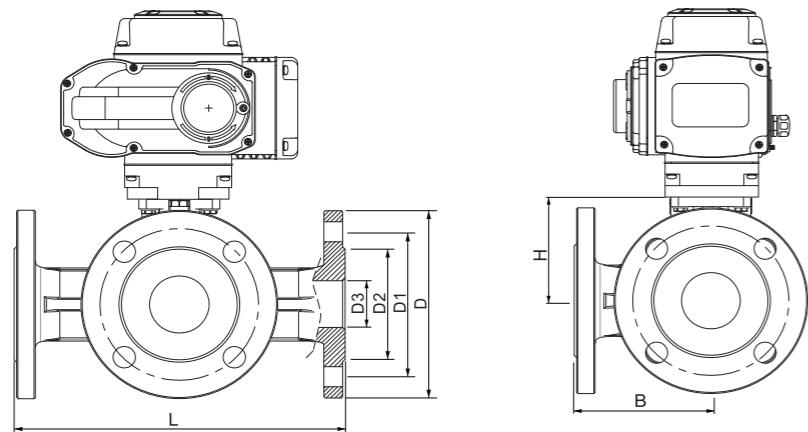
MEDLE	DN15	DN20	DN25	DN32	DN40	DN50	DN65	DN80	DN100	DN125	DN150	DN200
G	1/2"	3/4"	1"	1-1/4"	1-1/2"	2"	2-1/2"	3"	4"	5"	6"	8"
D3	15	20	25	30	40	50	65	80	100	125	150	200
D2	34.9	42.9	50.8	63.5	73	92.1	104.8	127	157.2	185.7	215.9	269.9
D1	60.3	69.9	79.4	88.9	98.4	120.7	139.7	152.4	190.5	215.9	241.3	298.5
D	90	100	110	115	125	150	180	190	230	255	280	345
L	150	164	180	200	220	240	260	280	320	380	440	550
H	53	58.5	70	77.5	88.5	92	107	119	150	200	240	300
B	72	80	90	100	110	120	130	140	160	190	220	260
n-φd	4-φ16	4-φ16	4-φ16	4-φ16	4-φ16	4-φ19	4-φ19	4/8-φ19	8-φ19	8-φ22	8-φ22	8-φ22

主要外形及连接法兰尺寸ANSI-Class300 Main Outline and Connecting Flange Size

MEDLE	DN15	DN20	DN25	DN32	DN40	DN50	DN65	DN80	DN100	DN125	DN150	DN200
G	1/2"	3/4"	1"	1-1/4"	1-1/2"	2"	2-1/2"	3"	4"	5"	6"	8"
D3	15	20	25	30	40	50	65	80	100	125	150	200
D2	34.9	42.9	50.8	63.5	73	92.1	104.8	127	157.2	185.7	215.9	269.9
D1	66.7	82.6	88.9	98.4	114.3	127	149.2	168.3	200	235	269.9	330.2
D	95	115	125	135	155	165	190	210	255	280	320	380
L	150	164	180	200	220	240	260	280	320	380	440	550
H	53	58.5	70	77.5	88.5	92	107	119	150	200	240	300
B	72	80	90	100	110	120	130	140	160	190	220	260
n-φd	4-φ16	4-φ19	4-φ19	4-φ19	4-φ22	8-φ19	8-φ22	8-φ22	8-φ22	8-φ22	12-φ22	12-φ25

主要外形及连接法兰尺寸ANSI-Class600 Main Outline and Connecting Flange Size

MEDLE	DN15	DN20	DN25	DN32	DN40	DN50	DN65	DN80	DN100	DN125	DN150	DN200
G	1/2"	3/4"	1"	1-1/4"	1-1/2"	2"	2-1/2"	3"	4"	5"	6"	8"
D3	15	20	25	30	40	50	65	80	100	125	150	200
D2	34.9	42.9	50.8	63.5	73	92.1	104.8	127	157.2	185.7	215.9	269.9
D1	66.7	82.6	88.9	98.4	114.3	127	149.2	168.3	215.9	266.7	292.1	349.2
D	95	115	125	135	155	165	190	210	275	330	355	420
L	150	164	180	200	220	240	260	280	320	380	440	550
H	53	58.5	70	77.5	88.5	92	107	119	150	200	240	300
B	72	80	90	100	110	120	130	140	160	190	220	260
n-φd	4-φ16	4-φ19	4-φ19	4-φ19	4-φ22	8-φ19	8-φ22	8-φ22	8-φ25	8-φ29	12-φ29	12-φ32



电动塑料球阀

VE10-B-P VINCER ELECTRIC PLASTIC BALL VALVE

电动塑料球阀为你提供耐腐蚀且性价比高的阀门解决方案。
Electric plastic ball valves provide you with corrosion-resistant and cost-effective valve solutions.



技术规范 Technical Parameter

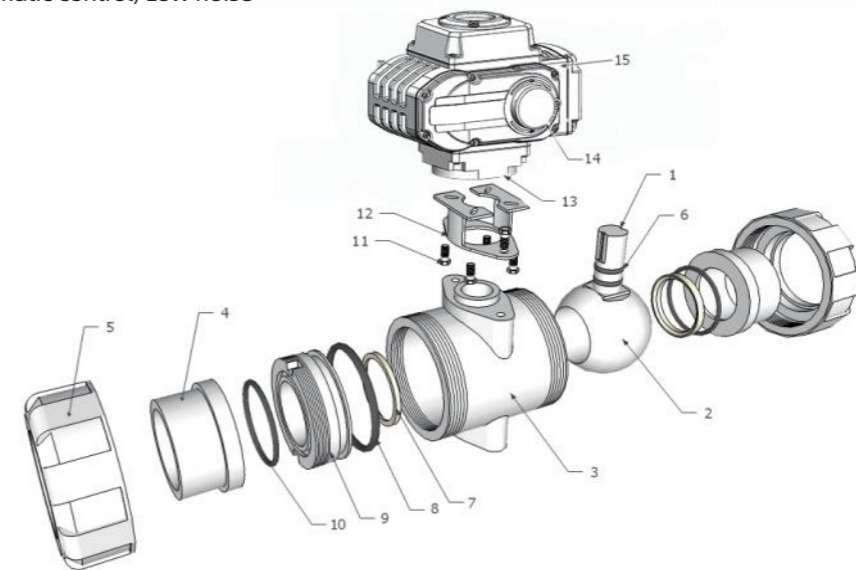
- 连接法兰尺寸 Connecting Flange Size: JB/T 79
- 试验和检验 Test & Inspection: GB/T 2828.1

优势 Advantage

轻质耐腐蚀，自动化控制，低噪音
Corrosion-resistant, Automatic control, Low noise

主要外形及连接法兰尺寸JIS-10K Main Outline and Connecting Flange Size

MEDLE	DN15	DN20	DN25	DN32	DN40	DN50	DN65	DN80	DN100	DN125	DN150	DN200
G	1/2"	3/4"	1"	1-1/4"	1-1/2"	2"	2-1/2"	3"	4"	5"	6"	8"
D3	15	20	25	30	40	50	65	80	100	125	150	200
D2	52	58	70	80	85	100	120	130	155	185	215	265
D1	70	75	90	100	105	120	140	150	175	210	240	290
D	95	100	125	135	140	155	175	185	210	250	280	330
L	150	164	180	200	220	240	260	280	320	380	440	550
H	53	58.5	70	77.5	88.5	92	107	119	150	200	240	300
B	72	80	90	100	110	120	130	140	160	190	220	260
n-φd	4-φ15	4-φ15	4-φ19	4-φ19	4-φ19	4-φ19	4-φ19	8-φ19	8-φ19	8-φ23	8-φ23	12-φ23

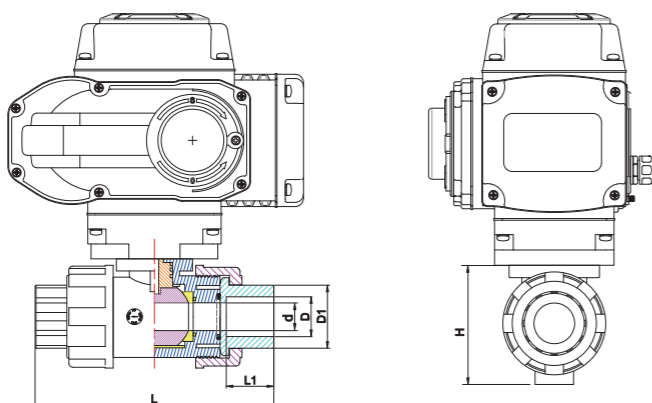


主要外形及连接法兰尺寸JIS-20K Main Outline and Connecting Flange Size

MEDLE	DN15	DN20	DN25	DN32	DN40	DN50	DN65	DN80	DN100	DN125	DN150	DN200
G	1/2"	3/4"	1"	1-1/4"	1-1/2"	2"	2-1/2"	3"	4"	5"	6"	8"
D3	15	20	25	30	40	50	65	80	100	125	150	200
D2	52	58	70	80	85	100	120	135	160	195	230	275
D1	70	75	90	100	105	120	140	160	185	225	260	305
D	95	100	125	135	140	155	175	200	225	270	305	350
L	150	164	180	200	220	240	260	280	320	380	440	550
H	53	58.5	70	77.5	88.5	92	107	119	150	200	240	300
B	72	80	90	100	110	120	130	140	160	190	220	260
n-φd	4-φ15	4-φ15	4-φ19	4-φ19	4-φ19	8-φ19	8-φ19	8-φ23	8-φ23	8-φ25	8-φ25	12-φ25

主要零件材质表 Main Parts Materials

序号 No.	零件名称	Component	材质 Material
1	阀杆	Stem	SS304、304L、316、316L
2	球体	Ball	UPVC/CPVC/PPH/PVDF
3	阀体	Body	UPVC/CPVC/PPH/PVDF
4	接管	Endconnector	UPVC/CPVC/PPH/PVDF
5	锁母	Union Nut	UPVC/CPVC/PPH/PVDF
6	O型环	O-Ring	PTFE
7	球密封	Seat Seal	EPDM/FKM
8	密封支架	SEAL CARRIER	PVC/CPVC/PPG/PPH/ABS
9	阀座	Seat	PVC/CPVC/PPG/PPH/ABS
10	O型环	O-Ring	EPDM/FPM
11	螺栓	Screw	不锈钢304 SS304
12	连接支架	Connecting Yoke	不锈钢304 SS304
13	连接套	Connecting Set	不锈钢304 SS304
14	电动装置	Electric Actuator	开关型、调节型、多回转型、防爆型 ON/OFF、Regulation、Multi-Turn、Explosion-Proof



主要外形及连接尺寸PN1.6(1.6MPa) Main Outline and Connecting Size

MEDLE	DN15	DN20	DN25	DN32	DN40	DN50	DN65	DN80	DN100	DN125	DN150	DN200	
G	1/2"	3/4"	1"	1-1/4"	1-1/2"	2"	2-1/2"	3"	4"	5"	6"	8"	
DIN	d	16	20	25	30	38	50	63	78	100	125	150	200
	D	20	25	32	40	50	63	75	90	110	141.3	168.3	225
ANSI	d	16	20	25	30	38	50	63	78	100	125	150	200
	D	21.3	26.7	33.4	42.2	48.3	60.3	73	88.9	114.3	141.3	168.3	219
JIS	d	16	20	25	30	38	50	63	78	100	125	150	200
	D	22	26	32	38	48	60	76	89	114	140	165	216
UK	d	16	20	25	30	38	50	63	78	100	125	150	200
	D	22	26	34	42	48	60	76	89	114	140	165	216
D1	30	36	45	55	64	77	96	112	141				
L1	22.8	25	28.5	32	34.8	39	46	48	64.5				
L	121.8	134.5	150.2	166.8	179	205	233	257	309				
H	61	74	90	104	121	146	169	220	255				

电动塑料三通球阀

VE10-B-P3 VINCER ELECTRIC 3-WAY PLASTIC BALL VALVE

电动三通塑料球阀为你提供智能可远程操控的流体换向解决方案。
Electric three-way plastic ball valve provides you with an intelligent and remotely controlled fluid reversal solution.

技术规范 Technical Parameter

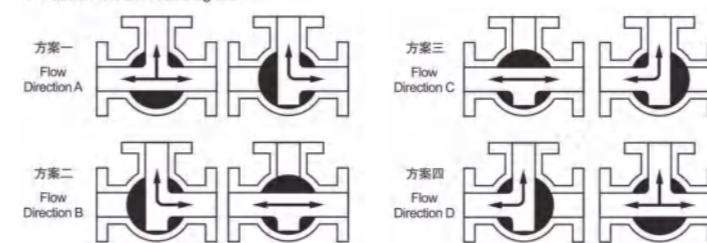
- 设计标准 Design Standard: DIN
- 连接尺寸 Connecting Size: GB/T 17219
- 试验和检验 Test & Inspection: GB/ T2828.1

优势 Advantage

多功能性, 轻质耐腐蚀, 自动化控制
Versatility, Corrosion-resistant, Automated control

T型三通球阀流向图

T-Pattern Flow Direction Diagram



L型三通球阀流向图

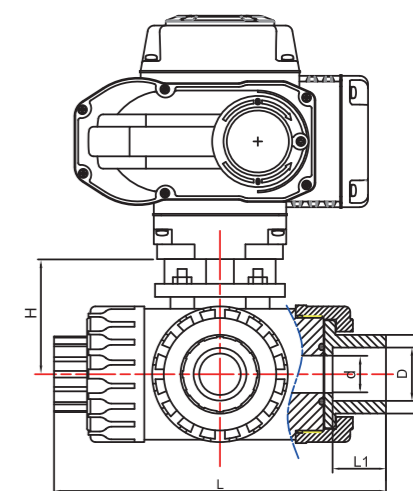
L-Pattern Flow Direction Diagram



主要外形及连接尺寸 Main Outline and Connecting

MEDLE	DN15	DN20	DN25	DN32	DN40	DN50
G	1/2"	3/4"	1"	1-1/4"	1-1/2"	2"
d	14	22	25	25	38	38
D	20	25	32	40	50	63
D1	30	36	45	55	64	77
L1	22.8	25	28.5	32	34.8	38
L	137	172	200	208	240	246
H	53	65	68	68	92	92

MEDLE(ANSI)	DN15	DN20	DN25	DN32	DN40	DN50
G	1/2"	3/4"	1"	1-1/4"	1-1/2"	2"
d	16	20	25	30	38	50
D	21.3	26.7	33.4	42.2	48.3	60.3
D1	30	36	45	55	64	77
L1	22.8	25	28.5	32	34.8	38
L	137	172	200	208	240	246
H	53	65	68	68	92	92



主要零件材质表 Main Parts Materials

序号 No.	零件名称 Component	材质 Material
1	电动装置 Electric Actuator	开关型、调节型、多回转型、防爆型 ON/OFF、Regulation、Multi-Turn、Explosion-Proof
2	手动装置 Hand Gear	塑料 Plastic
3	连接套 Connecting Set	不锈钢304 Stainless Steel 304
4	阀杆 Stem	不锈钢304、304L、316、316L Stainless Steel 304、304L、316、316L
5	螺栓 Screw	不锈钢304、316L Stainless Steel 304、316L
6	填料 Packing	PTFE
7	O型环 O-Ring	EPDM/FPM
8	阀座 Seat	PVC/CPVC/PPG/PPH/ABS
9	球体 Ball	PVC/CPVC/PPG/PPH/ABS
10	锁母 Union Nut	PVC/CPVC/PPG/PPH/ABS
11	接管 Endconnector	PVC/CPVC/PPG/PPH/ABS
12	阀体 Body	PVC/CPVC/PPG/PPH/ABS

电动卫生级球阀

VE10-B-K VINCER ELECTRIC 2-WAY CLAMP BALL VALVE

电动两通卡箍球阀为你提供易于安装且达到工业卫生级的阀门案。
Electric two-way clamp ball valve provides you with a valve solution that is easy to install and reaches industrial hygiene level.

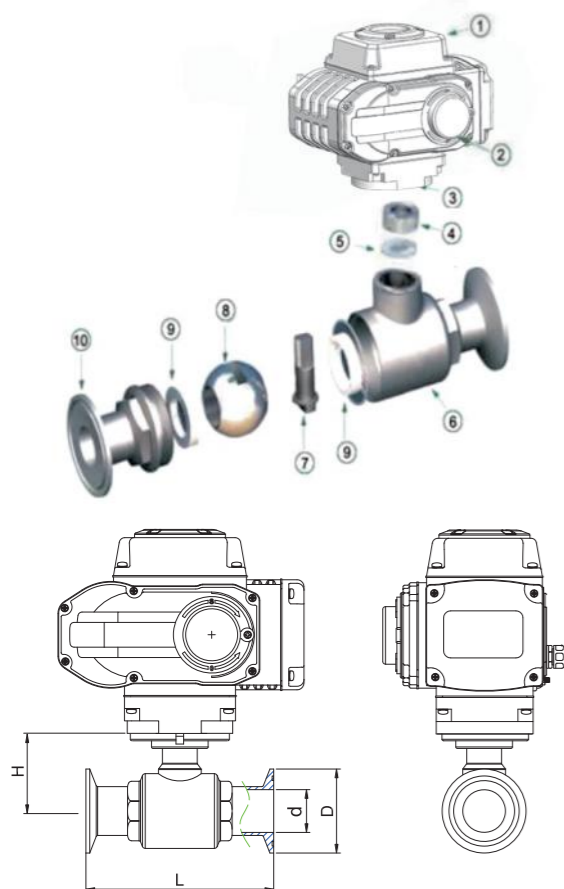
技术规范 Technical Parameter

- 设计依据 Design Basis: DIN、ISO/IDF、3A、ASME/BPE标准、SMS

优势 Advantage

卫生级设计, 自动化控制, 安装方便

Sanitary design, Automatic control, Easy installation



主要零件材质表 Main Parts Materials

序号 No.	零件名称 Component	材质 Material
1	电动装置 Electric Actuator	开关型、调节型、多回转型、防爆型 ON/OFF、Regulation、Multi-Turn、Explosion-Proof
2	手动装置 Hand Gear	塑料 Plastic
3	连接套 Connecting Set	不锈钢304 Stainless Steel 304
4	填料 Packing	PTFE
5	O型环 O-Ring	EPDM/PPM
6	右阀体 Body	不锈钢CF8、CF8M、CF3、CF3M Stainless Steel CF8、CF8M、CF3、CF3M
7	阀杆 Stem	不锈钢304、316、316L Stainless Steel 304、316、316L
8	球体 Ball	不锈钢304、304L、316、316L Stainless Steel 304、304L、316、316L
9	阀座 Seat	PTFE、尼龙(Nylon)、对位聚苯(PPL) 硬质合金(H/Y)
10	左阀体 Body	不锈钢304、304L、316、316L Stainless Steel 304、304L、316、316L

主要外形及连接卡箍尺寸 Main Outline and Connecting

Size	3/4"	1"	1-1/4"	1-1/2"	1-3/4"	2"	2-1/4"	2-1/2"	3"	3-1/2"	4"
	ø19	ø25	ø32	ø38	ø45	ø51	ø57	ø63	ø76	ø89	ø102
d	16	22	29	35	41	47	53	59	72	85	98
D	50.5	50.5	50.5	50.5	64	64	77.5	77.5	91	106	119
L	101	117	125	140	155	165	170	176	200	240	270
H	45	50	51	64	67	70	74	80	100	107	122

电动卫生级三通球阀

VE10-B-K3 VINCER ELECTRIC 3-WAY CLAMP BALL VALVE

电动三通卡箍球阀能帮助你解决智能调节介质流向问题且适用于各类食品厂。
The electric three-way clamp ball valve can help you solve the problem of intelligently adjusting the flow direction of the medium and is suitable for all types of food factories.

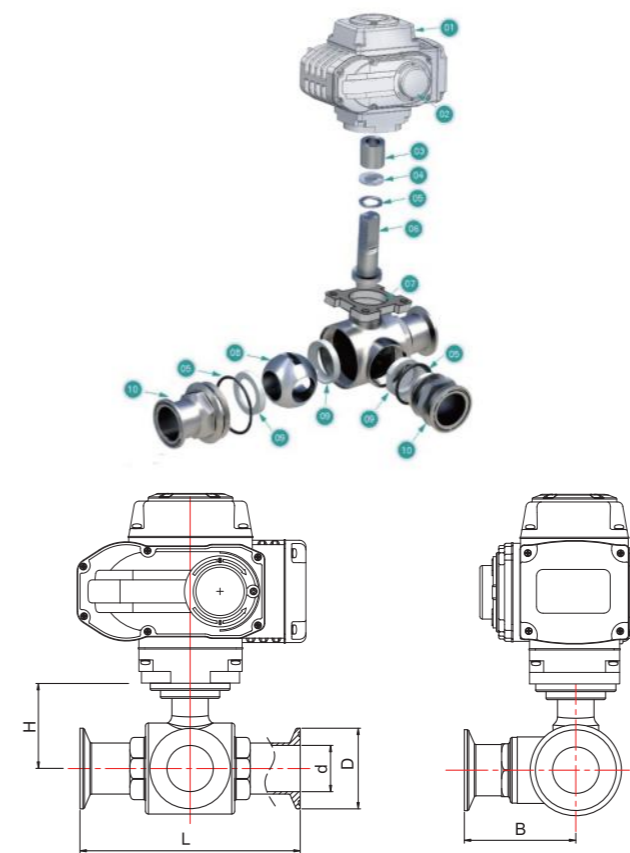
技术规范 Technical Parameter

- 设计依据 Design Basis: DIN、ISO/IDF、3A、ASME/BPE标准、SMS

优势 Advantage

多功能性, 卫生级设计, 自动化控制

Versatility, Hygienic design, Automated controls



主要零件材质表 Main Parts Materials

序号 No.	零件名称 Component	材质 Material
1	电动装置 Electric Actuator	开关型、调节型、多回转型、防爆型 ON/OFF、Regulation、Multi-Turn、Explosion-Proof
2	手动装置 Hand Gear	塑料 Plastic
3	连接套 Connecting Set	不锈钢304 Stainless Steel 304
4	填料 Packing	PTFE
5	O型环 O-Ring	EPDM/PPM
6	阀杆 Stem	不锈钢304、316、316L Stainless Steel 304、316、316L
7	主阀体 Body	不锈钢CF8、CF8M、CF3、CF3M Stainless Steel Cf8、CF8M、CF3、CF3M
8	球体 Ball	不锈钢304、304L、316、316L Stainless Steel 304、304L、316、316L
9	阀座 Seat	PTFE、尼龙(Nylon)、对位聚苯(PPL) 硬质合金(H/Y)
10	分阀体 Body	不锈钢304、304L、316、316L Stainless Steel 304、304L、316、316L

主要外形及连接尺寸 Main Outline and Connecting

Size	3/4"	1"	1-1/4"	1-1/2"	2"	2-1/2"	3"	3-1/2"	4"
	ø19	ø25	ø32	ø38	ø51	ø63	ø76	ø89	ø102
d	16.5	22	28.5	35	47.5	58.2	72	84.8	98.3
D	50.5	50.5	50.5	50.5	64	77.5	91	106	119
L	105	126	137	155	184	184	220	240	266
L1	60	61.5	69	77	90	92	122	135	150
H	45	48	52.5	65	74	84	102	112	122

电动高压球阀

VE10-B-H VINCER ELECTRIC HIGH-PRESSURE 2-WAY BALL VALVE

电动高压球阀能最高承受400bar压力，为你提供安全可靠的阀门方案。
The electric high-pressure ball valve can withstand up to 400bar pressure, providing you with a safe and reliable valve solution.

技术规范 Technical Parameter

- 设计标准 Design Standard: HGT 1289-2001
- 试验和检验 Test & Inspection: GB/T 12247-2009

优势 Advantage

高压性能，自动化控制，耐磨损
High pressure performance, Automatic control, Wear resistance



主要零件材质表 Main Parts Materials

序号 No.	零件名称 Component	材质 Material
1	主阀体 Body	不锈钢304、304L、316、316L Stainless Steel 304、304L、316、316L
2	球体 Ball	不锈钢304、304L、316、316L Stainless Steel 304、304L、316、316L
3	阀座 Seat	PTFE、尼龙(Nylon)、对位聚苯(PPL)
4	O型环 O-Ring	PTFE
5	分阀体 Body	不锈钢CF8、CF8M、CF3、CF3M Stainless Steel CF8、CF8M、CF3、CF3M
6	圆柱销 Cylindrical Pin	不锈钢304、316 Stainless Steel 304、316
7	阀杆 Stem	不锈钢304、316、316L Stainless Steel 304、316、316L
8	连接支架 Connecting Yoke	不锈钢304、316 Stainless Steel 304、316
9	连接套 Connecting Set	不锈钢304、316 Stainless Steel 304、316
10	Screw 螺栓	不锈钢304、316 Stainless Steel 304、316
11	手动装置 Hand Gear	塑料 Plastic
12	电动装置 Electric Actuator	开关型、调节型、多回转型、防爆型 ON/OFF、Regulation、Multi-Turn、Explosion-Proof

主要外形及连接尺寸20MPa Main Outline and Connecting Size

MEDLE	DN08	DN10	DN15	DN20	DN25	DN32	DN40	DN50
G	1/4"	3/8"	1/2"	3/4"	1"	1-1/4"	1-1/2"	2"
D	6	8	10	14.6	19.6	24.8	30	39.6
B	45	45	45	55	66	77	95	
H	43	43	43	53	64	70	79	
L	80	80	82	101	120	127	150	
L1	19	19	20	25	29	30	28	
L2	19	19	20	25	29	30	28	

电动高压三通球阀

VE10-B-H3 VINCER ELECTRIC HIGH-PRESSURE 3-WAY BALL VALVE

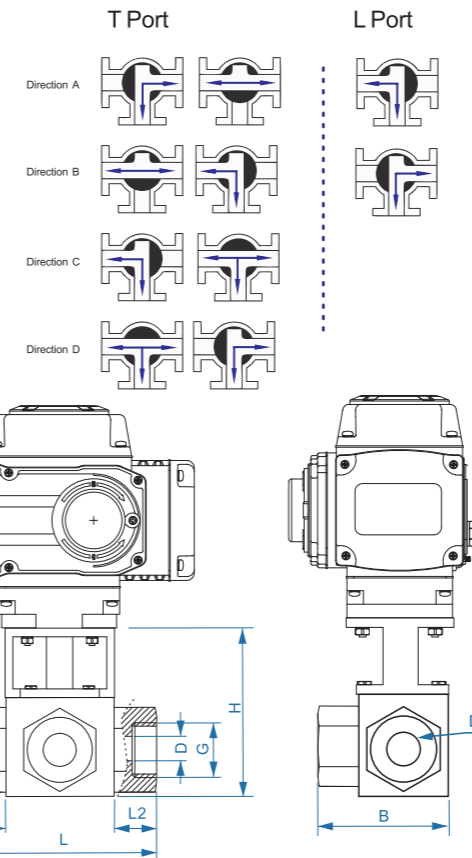
电动三通高压球阀能最高承受250bar压力，为你提供安全可靠的调节换向方案。
The electric three-way high-pressure ball valve can withstand a maximum pressure of 250bar, providing you with a safe and reliable adjustment and reversing solution.

技术规范 Technical Parameter

- 设计标准 Design Standard: HGT 1289-2001
- 试验和检验 Test & Inspection: GB/T 12247-2009

优势 Advantage

多功能性，高压性能，自动化控制
Versatility, High-pressure performance, Automated control



主要零件材质表 Main Parts Materials

序号 No.	零件名称 Component	材质 Material
1	主阀体 Body	不锈钢304、304L、316、316L Stainless Steel 304、304L、316、316L
2	球体 Ball	不锈钢304、304L、316、316L Stainless Steel 304、304L、316、316L
3	阀座 Seat	PTFE、尼龙(Nylon)、对位聚苯(PPL)
4	O型环 O-Ring	PTFE
5	分阀体 Body	不锈钢CF8、CF8M、CF3、CF3M Stainless Steel CF8、CF8M、CF3、CF3M
6	圆柱销 Cylindrical Pin	不锈钢304、316 Stainless Steel 304、316
7	阀杆 Stem	不锈钢304、316、316L Stainless Steel 304、316、316L
8	连接支架 Connecting Yoke	不锈钢304、316 Stainless Steel 304、316
9	连接套 Connecting Set	不锈钢304、316 Stainless Steel 304、316
10	Screw 螺栓	不锈钢304、316 Stainless Steel 304、316
11	电动装置 Electric Actuator	开关型、调节型、多回转型、防爆型 ON/OFF、Regulation、Multi-Turn、Explosion-Proof
12	手动装置 Hand Gear	塑料 Plastic

主要外形及连接尺寸20MPa Main Outline and Connecting Size

MEDLE	DN08	DN10	DN15	DN20	DN25	DN32	DN40	DN50
G	1/4"	3/8"	1/2"	3/4"	1"	1-1/4"	1-1/2"	2"
D	8	10	15	20	25	32	40	50
B	64	64	65	80	95	107	123	
H	43	43	43	53	64	70	79	
L	80	80	82	101	120	127	150	
L1	19	19	20	25	29	30	28	
L2	19	19	20	25	29	30	28	

电动衬氟法兰球阀

VE10-B-F-PTFE VINCER ELECTRIC PTFE-LINED BALL VALVE

电动衬氟球阀可耐强腐蚀介质，为你带来安全可靠的阀门方案。
Electric fluorine-lined ball valves can withstand strong corrosive media, provides you a safe and reliable valve solution.

技术规范 Technical Parameter

- 设计标准 Design Standard: GB/T 12237
- 结构长度 Face To Face Dimension: GB/T 12221
- 连接法兰尺寸 Connecting Flange Size: GB/T 9113、HG20592、JB/T 79、GB/T 12224
- 试验和检验 Test & Inspection: JB/T 9092、GB/T 26480

优势 Advantage

耐腐蚀，自动化控制，适用于高温介质
Corrosion resistant, Automatic control, Suitable for high temperature media



电动薄型球阀

VE10-B-I VINCER ELECTRIC ITALIAN THIN BALL VALVE

电动薄式球阀设计紧凑，体积小，可节省安装空间。
The electric thin ball valve has a compact design and small size, which can save installation space.

技术规范 Technical Parameter

- 设计标准 Design Standard: GB/T 12237
- 结构长度 Face To Face Dimension: GB/T 12221
- 连接法兰尺寸 Connecting Flange Size: GB/T 9113、HG20592、JB/T 79、GB/T 12224
- 试验和检验 Test & Inspection: JB/T 9092、GB/T 26480

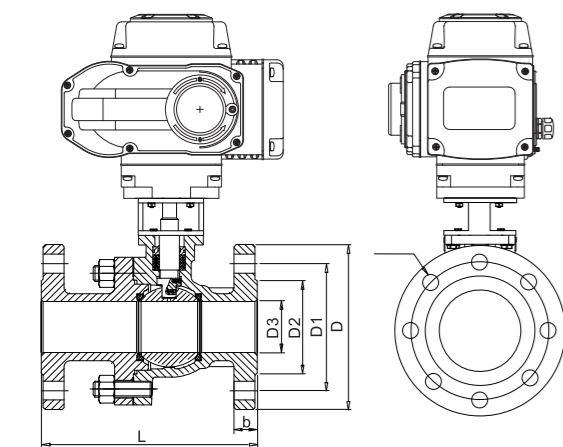
优势 Advantage

结构紧凑，自动化控制，耐磨损
Compact structure, Automatic control, Wear resistance



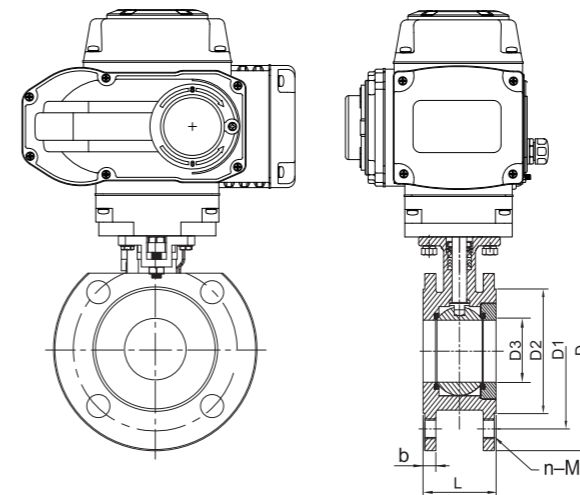
主要零件材质表 Main Parts Materials

序号 No.	零件名称 Component	材质 Material
1	主阀体 Body	铸铁、铸钢、不锈钢 Cast Iron, WCB, Stainless Steel
2	球体 Ball	铸铁、铸钢、不锈钢 Cast Iron, WCB, Stainless Steel
3	内衬材料/阀座 Lining Material/Seat	PTFE
4	填料 Packing	PTFE
5	压盖 Cap	铸铁、铸钢、不锈钢 Cast Iron, WCB, Stainless Steel
6	阀杆 Stem	不锈钢304、316 Stainless Steel 304, 316
7	连接套 Connecting Set	不锈钢304、316 Stainless Steel 304, 316
8	Screw 螺栓	不锈钢304、316 Stainless Steel 304, 316
9	手动装置 Hand Gear	塑料 Plastic
10	电动装置 Electric Actuator	开关型、调节型、多回转型、防爆型 ON/OFF, Regulation, Multi-Turn, Explosion-Proof



主要外形及连接法兰尺寸1.6MPa Main Outline and Connecting Flange Size

MEDLE	DN15	DN20	DN25	DN32	DN40	DN50	DN65	DN80	DN100	DN125	DN150	DN200
Inch	1/2"	3/4"	1"	1-1/4"	1-1/2"	2"	2-1/2"	3"	4"	5"	6"	8"
D3	15	20	25	30	40	50	65	80	100	125	150	200
D2	45	55	65	78	85	100	120	135	155	185	210	265
D1	65	75	85	100	110	125	145	160	180	210	240	295
D	95	105	115	135	145	160	180	195	215	245	280	335
b	14	16	16	18	18	20	20	22	22	24	24	26
L	140	140	150	165	180	200	220	250	280	320	360	400
n-φd	4-φ14	4-φ14	4-φ14	4-φ18	4-φ18	4-φ18	4-φ18	4/8-φ18	8-φ18	8-φ18	8-φ23	12-φ23



主要零件材质表 Main Parts Materials

序号 No.	零件名称 Component	材质 Material
1	主阀体 Body	不锈钢304、304L、316、316L Stainless Steel 304, 304L, 316, 316L
2	球体 Ball	不锈钢304、304L、316、316L Stainless Steel 304, 304L, 316, 316L
3	阀座 Seat	PTFE、尼龙(Nylon)、对位聚苯(PPL)
4	O型环 O-Ring	PTFE
5	填料 Packing	PTFE
6	阀杆 Stem	不锈钢304、316、316L Stainless Steel 304, 316, 316L
7	连接套 Connecting Set	不锈钢304、316 Stainless Steel 304, 316
8	Screw 螺栓	不锈钢304、316 Stainless Steel 304, 316
9	手动装置 Hand Gear	塑料 Plastic
10	电动装置 Electric Actuator	开关型、调节型、多回转型、防爆型 ON/OFF, Regulation, Multi-Turn, Explosion-Proof

主要外形及连接法兰尺寸1.6MPa Main Outline and Connecting Flange Size

MEDLE	DN25	DN32	DN40	DN50	DN65	DN80	DN100
G	1"	1-1/4"	1-1/2"	2"	2-1/2"	3"	4"
D3	23.5	31	36	44	55	70	88
D2	68	76	90	103	123	138	159
D1	85	100	110	125	145	160	180
D	98.5	135	128	142	158	187	206
L	44	53	63	72	95	120	139
b	16	16	18	18	18	21	21
n-M	4-M10	4-M14	4-M14	4-M14	4-M14	8-M14	8-M14

电动V型球阀

VE10-B-V VINCER ELECTRIC V-PORT BALL VALVE

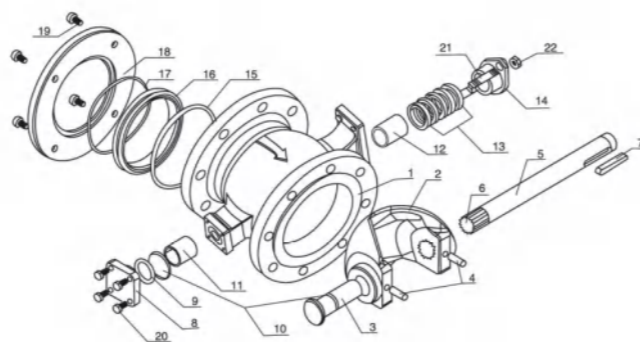
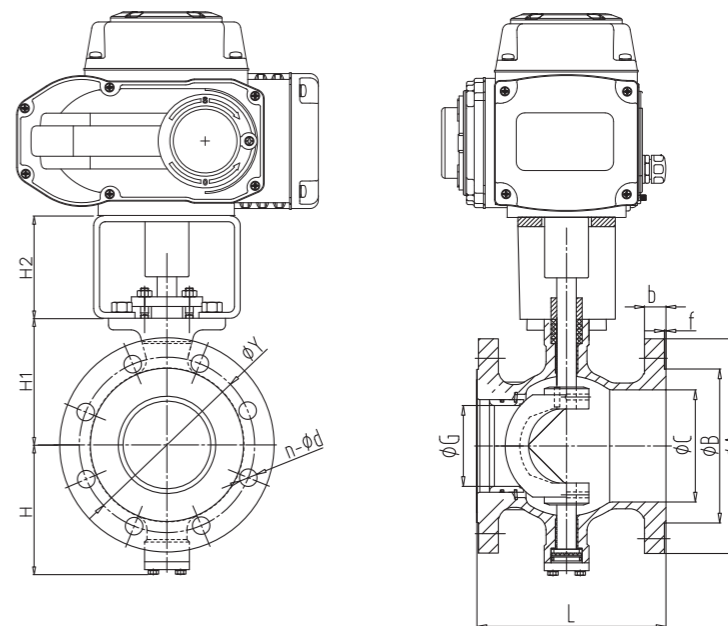
电动V型球阀相比普通O型球阀具有更加精准的流体调节能力。
Compared with ordinary O-type ball valves, electric V-type ball valves have more precise fluid regulation capabilities.

技术规范 Technical Parameter

- 设计标准 Design Standard: GB/T 12237、API 608、API 6D
- 结构长度 Face To Face Dimension: GB/T 12221、ASME B16.10、API 6D
- 连接法兰尺寸 Connecting Flange Size: GB/T 9113、HG20592、JB/T 79、GB/T 12224、ASME B16.5、ASME B16.47、ASME B16.11、ASME B16.25
- 试验和检验 Test & Inspection: JB/T 9092、GB/T 26480、API598、API 6D

优势 Advantage

流体控制精准，自动化控制，耐高温
Precise fluid control, Automatic control, High temperature resistance



主要零件材质表 Main Parts Materials

序号 No.	零件名称	Component	数量 Qty	材质 Material
1	阀体		1	WCB、CF8、CF8M、CF3、CF3M
2	球体	Ball	1	CF8、CF8M+镀硬铬或超音速喷涂
3	后阀杆	After Stem	1	17-4PH、SS316
4	圆柱销	Cylindrical Pin	1	SS304、S3316
5	前阀杆	Before Stem	2	17-4PH、SS316
6	花键	Spline	1	17-4PH、SS316
7	平键	Flat Key	1	SS304、45#
8	后压键	After Gland	1	CF8、CF8M
9	O形圈	O-Ring	1	氟橡胶 Viton
10	调整垫	Adjust Pad	各1	PTFE
11	自润滑轴承	Self-Lubricating Bearings	1	复合材料 Composite Material
12	自润滑轴承	Self-Lubricating Bearings	1	复合材料 Composite Material
13	填料	Packing	1组	PTFE
14	填料压盖	Packing Gland	1	CF8
15	O形圈	O-Ring	1	氟橡胶 Viton
16	密封座	Seal Block	1	PTFE、CF8、CF8M+镀硬铬或超音速喷涂
17	密封座弹簧	Seal Block Spring	1	SS316
18	密封座盖	Sealing Lid	1	Q235、SS304、S3316
19	内六角螺钉	Inner Hexagon Screw		SS304
20	六角螺钉	Hexagon Screw	4	SS304

主要外形及连接法兰尺寸1.6MPa Main Outline and Connecting Flange Size

MEDLE	DN25	DN32	DN40	DN50	DN65	DN80	DN100	DN125	DN150	DN200
Inch	1"	1-1/4"	1-1/2"	2"	2-1/2"	3"	4"	5"	6"	8"
A	115	140	150	165	185	200	220	250	285	340
B	65	76	84	99	118	132	156	184	211	266
C	38	45	50	62	73	90	115	134	164	206
G	20	25	32	40	55	62	80	100	125	155
Y	85	100	110	125	145	160	180	210	240	295
b	16	18	18	20	20	20	22	22	24	24
f	2	2	2	2	2	2	2	2	2	2
n-φd	4-φ14	4-φ18	4-φ18	4-φ18	8-φ18	8-φ18	8-φ18	8-φ18	8-φ22	12-φ22
L	102	102	114	124	145	165	194	194	229	243
H	81	86	90	93	108	123	138	128	170	200
H1	178	183	185	195	210	223	235	250	270	320
H2	28	30	30	26	28	31	33	25	31	31

电动蝶阀
Electric Butterfly Valve



电动对夹蝶阀

VE20-W VINCER Electric Wafer Butterfly Valves



电动塑料蝶阀

VE20-P Vincer Electric Plastic Butterfly Valve



电动法兰蝶阀

VE20-F VINCER Electric Flanged Butterfly Valve



电动卫生级蝶阀

VE20-K Vincer Electric Sanitary Clamp Butterfly Valve



电动衬氟蝶阀

VE20-PTFE Vincer Electric PTFE-Lined Butterfly Valve



电动硬密封蝶阀

VE20-HA Vincer Electric Hard-Seated Butterfly Valve

伟赛尔电动蝶阀
ELECTRIC BUTTERFLY VALVE



电动对夹蝶阀

VE20-W VINCER ELECTRIC WAFER BUTTERFLY VALVE

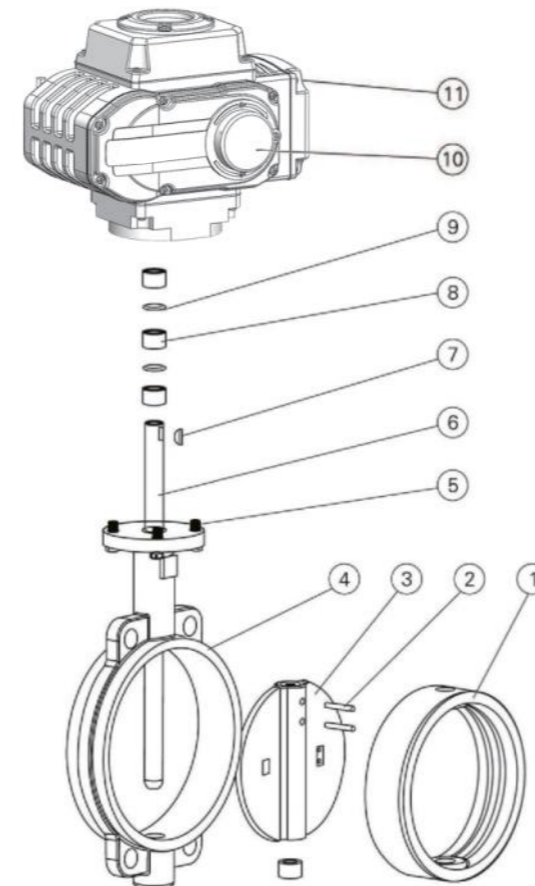
电动对夹蝶阀具有可靠的密封性能，可实现快速开启和关闭，是流体控制的理想选择。
Electric wafer butterfly valve has reliable sealing performance and can achieve rapid opening and closing, making it an ideal choice for fluid control.

技术规范 Technical Parameter

- 设计标准 Design Standard: GB/T 12238、JB/T 79、HG/T 20592
- 结构长度 Face to Face Dimension/对夹连接 Wafer Connecting: GB、JIS、ANSI
- 试验和检验 Test & Inspection: GB/T 13927

优势 Advantage

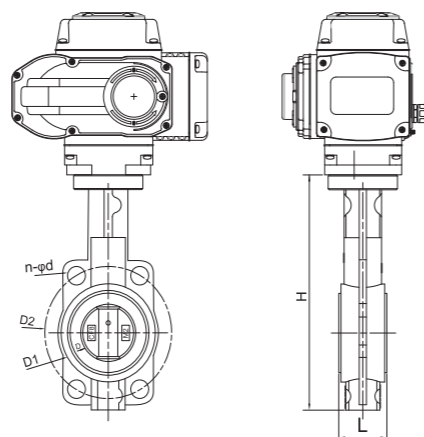
快速开闭，自动化控制，耐腐蚀
Quick opening and closing,
Automatic control, Corrosion resistance



主要零件材质表 Main Parts Materials

序号 No.	零件名称 Component	材质 Material		
		Z	C	P
1	阀座 Seat	三元乙丙，聚四氟乙烯 EPDM, PTFE		
2	圆锥销 Taper Pin	45钢 45 Steel	45钢 45 Steel	不锈钢 Stainless Steel
3	蝶板 Disc	球墨铸铁镀硬铬 Ductile Iron with Hard Chrome Plating	碳钢或不锈钢 Carbon Steel or Stainless Steel	不锈钢 Stainless Steel
4	阀体 Body	灰铸铁 Grey Cast Iron	碳钢 Carbon Steel	不锈钢 Stainless Steel
5	螺栓 Screw	35钢 35 Steel	碳钢 Carbon Steel	不锈钢 Stainless Steel
6	阀杆 Stem	45钢 45 Steel	不锈钢 Stainless Steel	不锈钢 Stainless Steel
7	键 Key	45钢 45 Steel	45钢 45 Steel	不锈钢 Stainless Steel
8	衬套 Bushing	铜基粉末冶金 Copper Base Powder Metallurgy	铜基粉末冶金 Copper Base Powder Metallurgy	铜基粉末冶金 Copper Base Powder Metallurgy
9	O型圈 O Ring	三元乙丙 EPDM, 氟橡胶 Viton		
10	手动装置 Hand Gear	塑料 Plastic		
11	电动装置 Electric Actuator	开关型、调节型、多回转型、防爆型 ON/OFF、Regulation、Multi-Turn、Explosion-Proof		

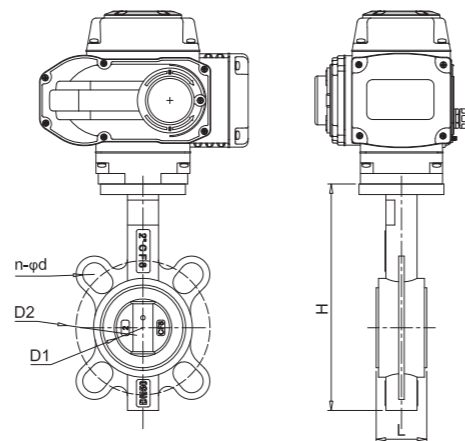
阀体材质: 铸铁、碳钢(WCB)
 阀板材质: 铸铁、不锈钢
 阀座材料: 三元乙丙(X)、聚四氟乙烯(F)
 旋转角度: 0~90°、0~360°
 控制方式: 开关型、调节型
 功能性选择: 普通, 防水(IP68), 防爆(Ex dII BT4)
 Body Material: Cast Iron, Carbon Steel(WCB)
 Disc Material: Cast iron, Stainless Steel
 Seat Material: EPDM, PTFE
 Actuator: ON-OFF, Regulation Type
 Rotation Angle: 0- 90°, 0 - 360°
 Functional options: Generic, Waterproof (IP68), Explosion-Proof (Ex dII BT4)



主要外形及连接尺寸PN(1.0, 1.6MPa) Main Outline and Connecting Flange Size

MEDLE	DN50	DN65	DN80	DN100	DN125	DN150	DN200	DN250	DN300	DN350	DN400	DN500	DN600
Inch	2"	2-1/2"	3"	4"	5"	6"	8"	10"	12"	14"	16"	20"	24"
D	50	65	80	100	125	150	200	250	300	350	400	500	600
D1	96	104	127	153	180	206	270	320	368	428	482	605	
D2	125	145	160	180	210	240	295	355	410	470	525	650	725
L	45	47	48	58	59	59	64	70	78	80	108	120	152
H	212	225	256	280	315	345	405	480	554				
n-φd	4-φ18	4-φ18	4-φ18	4-φ18	4-φ18	4-φ23	4-φ23	4-φ23	4-φ26	4-φ26	4-φ26	4-φ30	4-φ36

阀体材质: 不锈钢
 阀板材质: 不锈钢
 阀座材料: 三元乙丙(X)、聚四氟乙烯(F)
 旋转角度: 0~90°、0~360°
 控制方式: 开关型、调节型
 功能性选择: 普通, 防水(IP68), 防爆(Ex dII BT4)
 Body Material: Stainless Steel(CF8, CF8M)
 Disc Material: Stainless Steel
 Seat Material: EPDM, PTFE
 Actuator: ON-OFF, Regulation Type
 Rotation Angle: 0- 90°, 0 - 360°
 Functional options: Generic, Waterproof (IP68), Explosion-Proof (Ex dII BT4)



主要外形及连接尺寸PN(1.0, 1.6MPa) Main Outline and Connecting Flange Size

MEDLE	DN50	DN65	DN80	DN100	DN125	DN150	DN200	DN250	DN300	DN350	DN400	DN500
Inch	2"	2-1/2"	3"	4"	5"	6"	8"	10"	12"	14"	16"	20"
D	52.7	64.4	78.8	104.2	123.3	157	202.5	250.5	301.6	333.3	389.6	491.6
D1	89	104	127	153	180	206	270	320	368	428	482	605
D2	125	145	160	180	210	240	295	355	410	470	525	585
L	41	43	45	50	54	54	60	66	75.5	86.5	86.5	131.8
H	207	219	232	262	265	296	353	390	460	508	597	677
n-φd	4-φ18	4-φ18	4-φ18	4-φ18	4-φ18	4-φ23	4-φ23	4-φ23	4-φ26	4-φ26	4-φ26	4-φ30

电动塑料蝶阀

VE20-P VINCER ELECTRIC PLASTIC BUTTERFLY VALVE

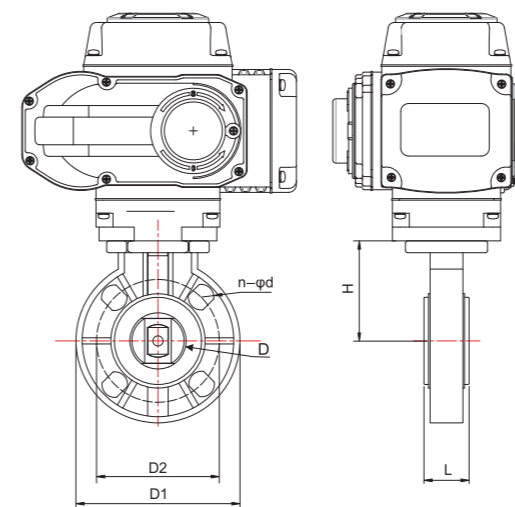
电动塑料蝶阀具有轻便、耐腐蚀等特点, 适用于化工、环保等领域。
 Electric plastic butterfly valves are lightweight and corrosion-resistant, and are suitable for chemical industry, environmental protection and other fields.

技术规范 Technical Parameter

- 标准 Standard: GB、DIN、ANSI、JIS

优势 Advantage

轻量化, 耐腐蚀, 自动化控制
 Lightweight, Corrosion-resistant, Automated control



主要零件材质表 Main Parts Materials

序号 No.	零件名称 Component	材质 Material
1	主阀体 Body	UPVC, CPVC, PPH, PVDF
2	阀板 Ball	UPVC, CPVC, PPH, PVDF
3	阀座 Seat	EPDM/FKM
4	阀杆 Stem	不锈钢304、316、401 Stainless Steel 304、316、401
5	连接套 Connecting Set	不锈钢401、304、316 Stainless Steel 401、304、316
6	Screw 螺栓	不锈钢304、316 Stainless Steel 304、316
7	电动装置 Electric Actuator	开关型、调节型、防爆型 ON/OFF、Regulation、Multi-Turn、Explosion-Proof
8	手动装置 Hand Gear	塑料 Plastic

主要外形及连接尺寸PN10(1.0MPa) Main Outline and Connecting Flange Size

MEDLE	DN50	DN65	DN80	DN100	DN125	DN150	DN200	DN250	DN300
Inch	2"	2-1/2"	3"	4"	5"	6"	8"	10"	12"
D	52.7	64.4	83	104.2	123.3	157	202.5	250.5	300
D1	160	180	195	226	255	280	340	410	470
D2	120	140	155	178	200	230	285	345	400
L	44	43	47	52	63	68	80	90	105
H	99	108	131	156	168	182	230	261	305
n-φd	4-φ18	4-φ18	8-φ18	8-φ18	8-φ18	8-φ22	8-φ22	12-φ22	12-φ22

电动法兰蝶阀

VE20-F VINCER ELECTRIC FLANGED BUTTERFLY VALVE

电动法兰蝶阀采用先进的设计和制造工艺，广泛应用于水处理、化工等领域。
Electric flanged butterfly valves adopt advanced design and manufacturing technology and are widely used in water treatment, chemical industry and other fields.

技术规范 Technical Parameter

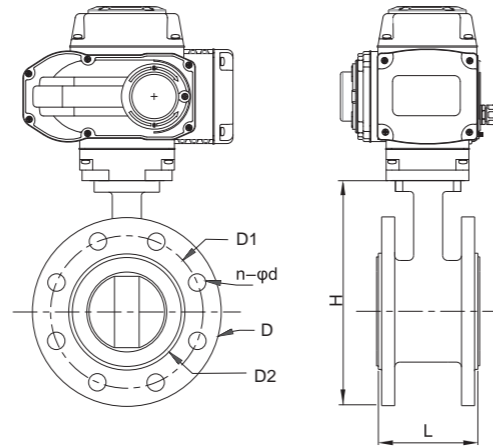
- 标准 Standard: GB、DIN、ANSI、JIS

优势 Advantage

高密封性，自动化控制，耐高压
High sealing, Automatic control, High pressure resistance

阀体材质: 铸铁、碳钢(WCB)、不锈钢(CF8、CF8M)
阀板材质: 铸铁、不锈钢
阀座材料: 三元乙丙(X)、聚四氟乙烯(F)
旋转角度: 0° ~ 90°、0° ~ 360°
控制方式: 开关型、调节型
功能性选择: 普通, 防水(IP68), 防爆(Ex dII BT4)

Body Material: Cast Iron, Carbon Steel(WCB), Stainless Steel(CF8, CF8M)
Disc Material: Cast iron, Stainless Steel
Seat Material: EPDM, PTFE
Actuator: ON-OFF, Regulation Type
Rotation Angle: 0° - 90°, 0° - 360°
Functional options: Generic, Waterproof (IP68), Explosion-Proof (Ex dII BT4)



主要外形及连接尺寸PN(1.0, 1.6MPa) Main Outline and Connecting Flange Size

MEDLE	DN50	DN65	DN80	DN100	DN125	DN150	DN200	DN250	DN300	DN350	DN400	DN500
Inch	2"	2-1/2"	3"	4"	5"	6"	8"	10"	12"	14"	16"	20"
d	52.7	64.4	83	104.2	123.3	157	202.5	250.5	301.6	333.3	389.6	491.6
D	165	185	200	220	250	285	340	395	445	505	565	670
D1	125	145	160	180	210	240	295	355	410	470	525	620
D2	99	118	132	156	184	211	266	319	370	429	480	582
L	108	112	114	127	140	140	150	165	185	195	216	229
H	192	207	224	255	290	325	386	460	510	565	632	759
n-φd	4-φ18	4-φ18	8-φ18	8-φ18	8-φ18	8-φ22	8-φ22	12-φ22	12-φ22	16-φ22	16-φ26	20-φ26



电动卫生级蝶阀

VE20-K VINCER ELECTRIC SANITARY CLAMP BUTTERFLY VALVE

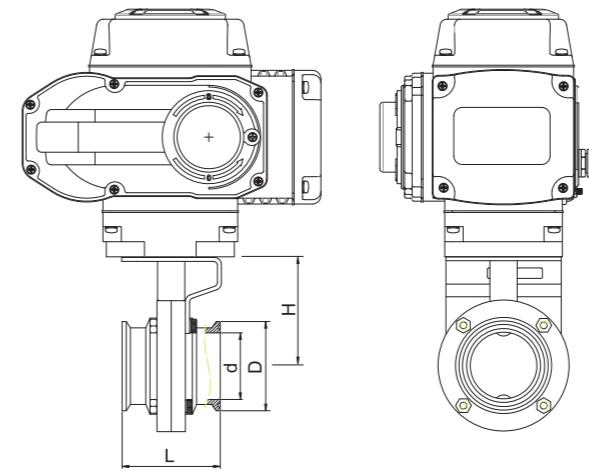
电动卫生级卡箍蝶阀符合工业级卫生标准，适用于食品等行业，具有优异的洁净性和卫生性能。
electric sanitary clamp butterfly valve complies with industrial hygiene standards and is suitable for food and other industries. It has excellent cleanliness and hygienic performance.

技术规范 Technical Parameter

- 设计依据 Design Basis: DIN、ISO/IDF、3A、ASME/BPE、SMS

优势 Advantage

卫生级设计，自动化控制，耐腐蚀
Hygienic design, Automatic control, Corrosion resistance



主要零件材质表 Main Parts Materials

序号 No.	零件名称 Component	材质 Material
1	电动装置 Electric Actuator	开关型、调节型、多回转型、防爆型 ON/OFF, Regulation, Multi-Turn, Explosion-Proof
2	手动装置 Hand Gear	塑料 Plastic
3	连接套 Connecting Set	不锈钢304 Stainless Steel 304
4	阀杆 Stem	不锈钢304、304L、316、316L Stainless Steel 304, 304L, 316, 316L
5	螺栓 Screw	不锈钢304、316L Stainless Steel 304, 316L
6	螺母 Nut	不锈钢304、316L Stainless Steel 304, 316L
7	填料 Packing	PTFE
8	连接支架 Connecting Yoke	不锈钢304、304L、316、316L Stainless Steel 304, 304L, 316, 316L
9	蝶板 Disc	不锈钢304、304L、316、316L Stainless Steel 304, 304L, 316, 316L
10	阀座 Seat	三元乙丙橡胶、硅胶、定制高温 EPDM, SIL, High temperature glue
11	左阀体 Left Body	不锈钢CF8、CF8M、CF3、CF3M Stainless Steel CF8, CF8M, CF3, CF3M
12	右阀体 Right Body	不锈钢CF8、CF8M、CF3、CF3M Stainless Steel CF8, CF8M, CF3, CF3M

主要外形及连接尺寸(卡箍连接) 1.6MPa Main Outline and Connecting with clamp connection

Size	3/4"	1"	1-1/4"	1-1/2"	1-3/4"	2"	2-1/4"	2-1/2"	3"	3-1/2"	4"	4"	4-1/2"	5"	6"
	Ø19	Ø25	Ø32	Ø38	Ø45	Ø51	Ø57	Ø63	Ø76	Ø89	Ø102	Ø108	Ø114	Ø133	Ø159
d	16.1	22.4	28.8	35.1	42	47.8	53	59.5	72.2	85	97.6	104	110	128	153.5
D	50.5	50.5	50.5	50.5	64	64	77.5	77.5	91	106	119	119	130	145	183
L	66	66	66	66	70	72	76	76	76	84	90	90	106	128/100	132/100

电动衬氟蝶阀

VE20-PTFE VINCER ELECTRIC PTFE-LINED BUTTERFLY VALVE

电动衬氟蝶阀采用PTFE内衬材质，具有耐腐蚀特点，适用于腐蚀性介质的流体控制。
Electric PTFE-lined butterfly valve is made of PTFE lining material, which is corrosion-resistant and suitable for fluid control of corrosive media.

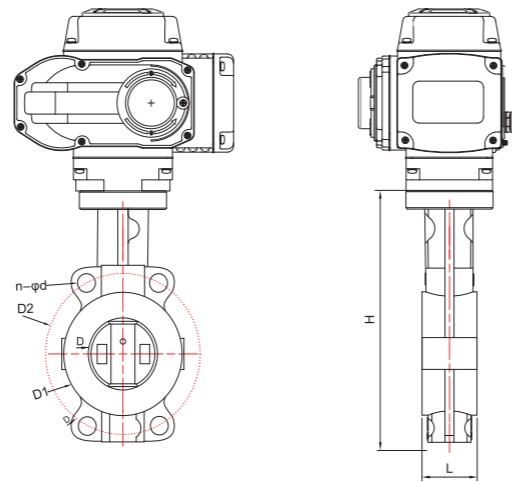
技术规范 Technical Parameter

- 标准 Standard: GB、DIN、ANSI、JIS

优势 Advantage

耐腐蚀，自动化控制，适用于高温介质
Corrosion resistant, Automatic control, Suitable for high temperature media

阀体材质: 铸铁、碳钢(WCB)、不锈钢(CF8、CF8M)
阀板材质: 铸铁+聚四氟乙烯(F)
阀座材料: 聚四氟乙烯(F)
旋转角度: 0~90°, 0~360°
控制方式: 开关型、调节型
功能性选择: 普通, 防水(IP68), 防爆(Ex dII BT4)
Body Material: Cast Iron, Carbon Steel(WCB), Stainless Steel(CF8, CF8M)
Disc Material: Cast Iron+PTFE
Seat Material: PTFE
Actuator: ON-OFF, Regulation Type
Rotation Angle: 0 ~ 90°, 0 ~ 360°
Functional options: Generic, Waterproof (IP68), Explosion-Proof (Ex dII BT4)



对夹连接 主要外形及连接尺寸PN(1.0, 1.6MPa) Wafer Type Main Outline and Connecting Flange Size

MEDLE	DN50	DN65	DN80	DN100	DN125	DN150	DN200	DN250	DN300	DN350	DN400	DN500
Inch	2"	2-1/2"	3"	4"	5"	6"	8"	10"	12"	14"	16"	20"
D	50	65	80	100	125	150	200	250	300	350	400	500
D1	96	104	127	153	180	206	270	320	368	428	482	605
D2	125	145	160	180	210	240	295	355	410	470	525	585
L	43	46	46	52	56	56	60	68	78	78	102	127
H	212	230	233	270	298	337	407	480	555	610	715	870
n-φd	4-φ18	4-φ18	4-φ18	4-φ18	4-φ18	4-φ23	4-φ23	4-φ23	4-φ23	4-φ23	4-φ25	4-φ25

法兰连接 主要外形及连接尺寸 PN(1.0, 1.6MPa) Flange Type Main Outline and Connecting Flange Size

MEDLE	DN50	DN65	DN80	DN100	DN125	DN150	DN200	DN250	DN300	DN350	DN400	DN500
Inch	2"	2-1/2"	3"	4"	5"	6"	8"	10"	12"	14"	16"	20"
D	50	65	80	100	125	150	200	250	300	350	400	500
D1	96	104	127	153	180	206	270	320	368	428	482	605
D2	125	145	160	180	210	240	295	355	410	470	525	585
L	108	112	114	127	140	140	152	165	178	190	216	229
H	212	230	233	270	298	337	407	480	555	610	715	870
n-φd	4-φ18	4-φ18	8-φ18	8-φ18	8-φ18	8-φ23	8-φ23	12-φ23	12-φ23	16-φ23	16-φ25	20-φ25

电动硬密封蝶阀

VE20-HA VINCER ELECTRIC HARD-SEATED BUTTERFLY VALVE

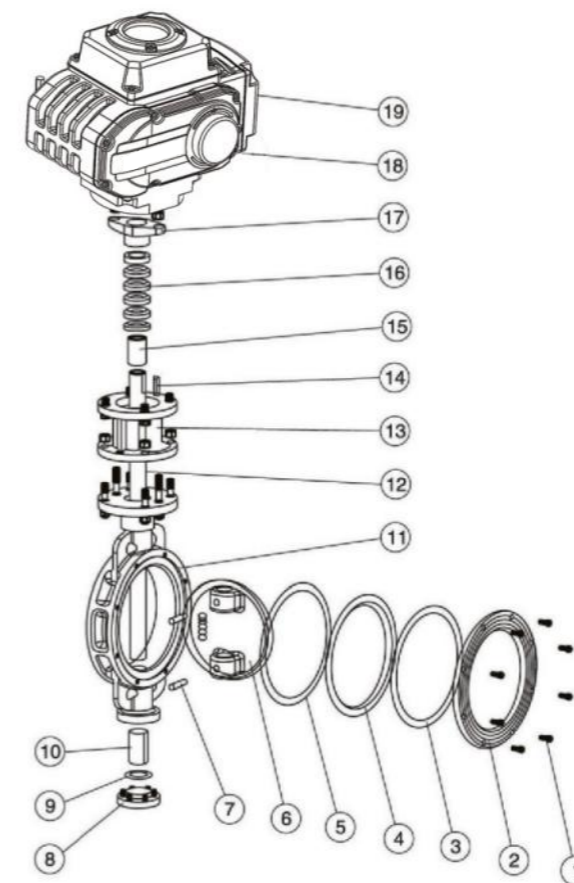
电动硬密封蝶阀采用耐高温、耐磨损的硬质密封材料，适用于高温高压下的流体控制。
Electric hard-seated butterfly valve adopts high-temperature-resistant and wear-resistant hard sealing materials and is suitable for fluid control under high temperature and high pressure.

技术规范 Technical Parameter

- 设计标准 Design Standard: GB/T 12237、API 608、API 6D
- 结构长度 Face To Face Dimension: GB/T 12221、ASME B16.10、API 6D
- 连接法兰尺寸 Connecting Flange Size: GB/T 9113、HG20592、JB/T 79、GB/T 12224、ASME B16.5、ASME B16.47、ASME B16.11、ASME B16.25
- 试验和检验 Test & Inspection: JB/T 9092、GB/T 26480、API598、API 6D

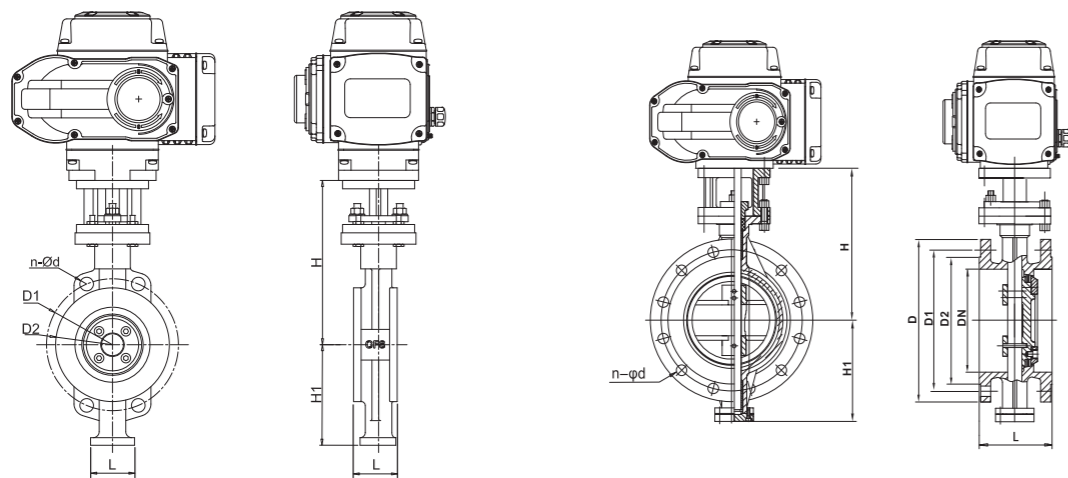
优势 Advantage

耐磨损，自动化控制，高密封性
Wear resistance, Automatic control, High sealing



主要零件材质表 Main Parts Materials

序号 No.	零件名称 Component	材质 Material		
		C	P	R
1	内六角螺钉 Inner Hexagon Screw	1Cr18Ni9Ti	1Cr18Ni9Ti	1Cr1812Mo2Ti
2	阀盖 Bonnet	WCB	1Cr18Ni9Ti	ZG1Cr18Ni12Mo2Ti
3	垫片 Gasket	1Cr18Ni9Ti	1Cr18Ni9Ti	1Cr1812Mo2Ti
4	阀座 Seat	不锈钢+柔性石墨 PTFE Stainless Steel+Graphite PTFE		
5	垫片 Gasket	1Cr18Ni9Ti	1Cr18Ni9Ti	1Cr1812Mo2Ti
6	蝶板 Butterfly Plate	WCB	ZG1Cr18Ni9Ti	ZG1Cr18Ni12Mo2Ti
7	圆柱销 Straight Pin	45	1Cr18Ni9Ti	1Cr1812Mo2Ti
8	下盖 Bottom Cover	WCB	ZG1Cr18Ni9Ti	ZG1Cr18Ni12Mo2Ti
9	垫片 Gasket	不锈钢+柔性石墨 PTFE Stainless Steel+Graphite PTFE		
10	衬套 Bushing	PTFE复合轴承 Composite bearings		
11	阀体 Body	WCB	ZG1Cr18Ni9Ti	ZG1Cr18Ni12Mo2Ti
12	阀杆 Stem	1Cr13	1Cr18Ni9Ti	ZG1Cr18Ni9Ti
13	支架 Yoke	WCB	WCB	WCB
14	键 Key	45	45	45
15	衬套 Bushing	PTFE复合轴承 Composite Bearings		
16	填料 Packing	柔性石墨 PTFE Graphite PTFE		
17	压盖 Gland	WCB	ZG1Cr18Ni9Ti	ZG1Cr18Ni12Mo2Ti
18	位置指示器 Location Indicator	塑料 Plastic		



电动凸耳蝶阀

VE20-LUG VINCER ELECTRIC LUGGED BUTTERFLY VALVE

电动凸耳蝶阀结构简单、操作便捷、适用于水处理、污水处理等系统中的流体控制。
Electric lugged butterfly valve has a simple structure and is easy to operate. It is suitable for fluid control in water treatment, sewage treatment and other systems.

技术规范 Technical Parameter

- 标准 Standard: GB、DIN、ANSI、JIS

优势 Advantage

结构稳固，自动化控制，耐高压性能
Stable structure, Automatic control, High pressure resistance



对夹连接 主要外形及连接尺寸GB-PN16(1.6MPa) Wafer Type Main Outline and Connecting Size

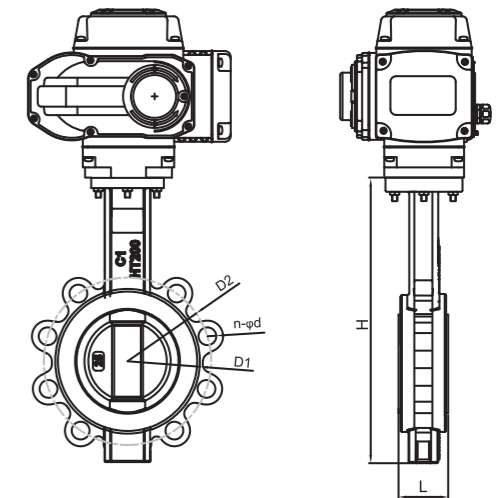
MEDLE	DN80	DN100	DN125	DN150	DN200	DN250	DN300	DN350	DN400	DN450	DN500
Inch	3"	4"	5"	6"	8"	10"	12"	14"	16"	18"	20"
D	83	104.2	123.3	157	202.5	250.5	301.6	333.3	389.6	449.5	491.6
D1	160	180	210	240	295	355	410	410	525	585	620
D2	132	156	184	211	266	319	370	429	480	548	582
L	49	56	64	70	71	76	83	83	102	114	127
H	260	298	315	325	380	435	475	475	580	620	660
H1	114	128	148	170	188	235	265	265	335	380	410
n-φd	4-φ18	8-φ18	8-φ18	8-φ22	12-φ23	12-φ26	12-φ26	12-φ26	16-φ30	20-φ30	20-φ33

法兰连接 主要外形及连接尺寸 Flange Type Main Outline and Connecting Size

DN	Inch	L	1.6 MPa				2.5 MPa				150LB				300LB				High	
			D	D1	D2	Z-φd	D	D1	D2	Z-φd	D	D1	D2	Z-φd	D	D1	D2	Z-φd	H	H1
50	2"	108	165	125	102	4-φ18	165	125	102	4-φ18	150	120.7	92	4-φ19	165	127	92	8-φ19	130	96
65	2-1/2"	112	185	145	122	4/8-φ18	185	145	122	8-φ18	180	137.7	105	4-φ19	190	149.2	105	8-φ22	145	97
80	3"	114	200	160	138	8-φ18	200	160	138	8-φ18	190	152.4	127	4-φ19	210	168.3	127	8-φ22	167	108
100	4"	127	220	180	158	8-φ18	235	190	162	8-φ22	230	190.5	157	8-φ19	255	200	157	8-φ22	195	128
125	5"	140	250	210	188	8-φ18	270	220	188	8-φ26	255	215.9	186	8-φ22	280	235	186	8-φ22	240	145
150	6"	140	285	240	212	8-φ22	300	250	218	8-φ26	280	241.3	216	8-φ22	320	269.9	216	12-φ22	260	168
200	8"	152	340	295	268	12-φ22	360	310	278	12-φ26	345	298.5	270	8-φ22	380	330.2	270	12-φ26	290	190
250	10"	165	405	355	320	12-φ26	425	370	335	12-φ30	405	362	324	12-φ26	445	387.4	324	16-φ29	310	235
300	12"	178	460	410	378	16-φ26	485	430	305	16-φ30	485	431.8	381	12-φ26	520	450.8	381	16-φ32	380	266
350	14"	190	520	470	438	16-φ26	555	490	450	16-φ33	535	476.3	413	12-φ29	585	514.4	413	20-φ32	435	300
400	16"	216	580	525	490	16-φ30	620	550	505	16-φ36	595	539.8	470	16-φ29	650	571.5	470	20-φ35	460	330
450	18"	222	640	585	550	20-φ30	670	600	555	20-φ36	635	577.9	533	16-φ32	710	628.6	533	24-φ35	485	355
500	20"	229	715	650	610	20-φ33	730	660	615	20-φ36	700	635	584	20-φ32	775	685.8	584	24-φ35	520	385
600	24"	267	840	770	725	20-φ36	845	770	720	20-φ39	815	749.3	692	20-φ35	915	812.8	692	24-φ42	610	455
700	28"	292	910	840	795	24-φ36	960	875	820	24-φ42	925	863.6	800	28-φ35	1035	939.8	800	28-φ45	675	505

网体材质:铸铁、碳钢(WCB)、不锈钢(CF8、CF8M)
阀板材质:铸铁、不锈钢
阀座材料:三元乙丙(X)、聚四氟乙(F)
旋转角度:0~90° 0-360
控制方式:开关型、调节型
功能性选择:普通, 防水(IP68), 防爆(Ex dII BT4)

Body Material: Cast Iron, Carbon Steel(WCB), Stainless Steel(CF8, CF8M)
Disc Material: Cast Iron, Stainless Steel
Seat Material: EPDM PTFE
Actuator: ON-OFF, Regulation Type
Rotation Angle: 0 ~ 90, 0 ~ 360
Functional options: Generic, Waterproof (IP68), Explosion-Proof (Ex dII BT4)



主要外形及连接尺寸PN(1.0, 1.6MPa)Main Outline and Connecting Flange Size

MEDLE	DN50	DN65	DN80	DN100	DN125	DN150	DN200	DN250	DN300	DN350	DN400	DN500
Inch	2"	2-1/2"	3"	4"	5"	6"	8"	10"	12"	14"	16"	20"
D	52.7	64.4	78.8	104.2	123.3	157	202.5	250.5	301.6	333.3	389.6	491.6
D1	89	104	127	153	180	206	270	320	368	428	482	605
D2	125	145	160	180	210	240	295	355	410	470	525	585
L	41.4	44	45	52	54	54	55	60	65	76	86	130
H	217	234	252	289	318	341	428	490	567			
n-φd	4-M16	4-M16	8-M16	8-M16	8-M16	8-M20	12-M20	12-M24	12-M24			

多回转阀门
Multi-turn Electric Actuator Valve Series



电动闸阀
VE30-EGA VINCER Electric Gate Valve



电动截止阀
VE30-EGO VINCER Electric Globe Valve



电动刀闸阀
VE30-EKG VINCER Electric Knife Gate Valve

伟赛尔多回转阀门
VINCER MULTI-TURN ELECTRIC ACTUATOR VALVE SERIES



电动闸阀

VE30-EGA VINCER ELECTRIC GATE VALVE

利用我们的电动闸阀提升您的工业自动化，提供精确的控制和无缝操作，从而在您的系统中实现最佳的流体管理。

Elevate your industrial automation with our electric actuated gate valve, offering precise control and seamless operation for optimal fluid management in your systems.

技术规范 Technical Parameter

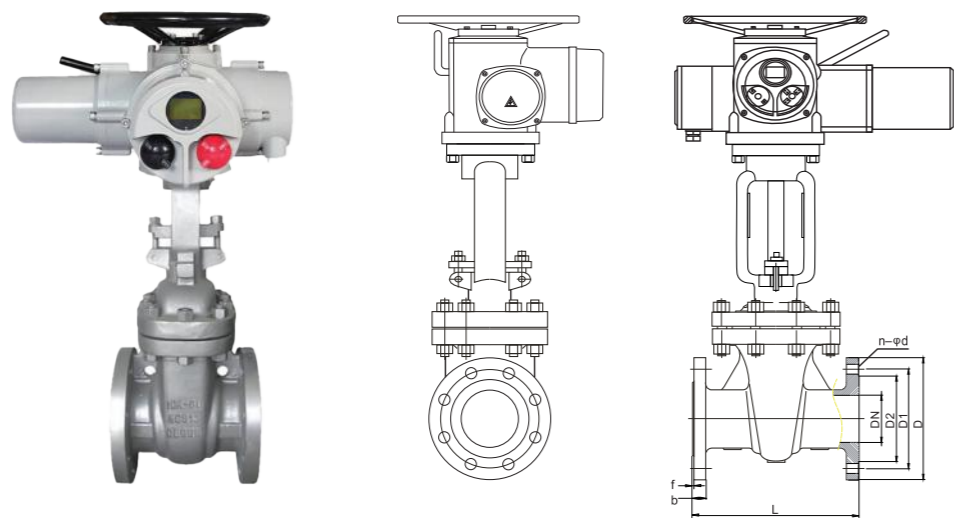
- 设计与制造 Design and Manufacture: GB 12234、ASME B16.34、API600、JIS B2073 B2083
- 结构长度 Structure Length: GB 12221、ASME B16.10、JIS B2002
- 压力-温度等级 Pressure-temperature rating: GB/T 12224、ASME B16.34、API600、JIS B2212 B2214
- 连接法兰 Connection flange: JB/T79.1-2-94、GB9113-2009、HG20592~20635、ASME B16.5、ASME B16.25 ASME B16.47、JIS B2073 B2083
- 试验与检验 Test and Inspection: JB/T 9092-1999、GB 13927-2005、ISO5208、API598、JIS B2003

性能参数 Performance parameter

序号	项目名称	项目名称					
		PN16	PN25	PN40	PN64	PN100	PN160
1	公称压力PN(MPa)	1.6	2.5	4.0	6.4	10	16
2	壳体强度试验压力 Shell strength test pressure(MPa)	常温下公称压力的1.5倍 1.5 Times the nominal pressure at room temperature					
3	高压密封试验压力 High-pressure sealing Test pressure(MPa)	常温下公称压力的1.1倍 1.1Times the nominal pressure at room temperature					
4	常温下工作压力Operating pressure at room temperature(MPa)	按GB/T 12224 压力温度额定值 According to GB/T 12224 pressure temperature rating					

主要零件材质表 Main Parts Materials

零件名称 Component	材质 Material								
阀体/阀盖 Body/Bonnet	CF8	CF3	CF8M	CF3M	WCB	LCB	WC6	WC9	C5
闸板 Wedge	CF8	CF3	CF8M	CF3M	WCB	LCB	WC6	WC9	C5
阀杆 Stem	F304	F304L	F316	F316L	2CR13	F304	F304	F304	F304
阀杆螺母 Stem Nut	铝青铜 Aluminium Bronze								
填料 Packing	PTFE/柔性石墨				石墨 Graphite				
垫片 Gasket	PTFE/金属缠绕垫				石墨 Graphite				
压盖 Gland	CF8	CF3	CF8M	CF3M	WCB	LCB	WC6	WC9	C5
螺栓 Bolt	不锈钢 Stainless Steel				35CrMoA				
螺母 Nut	不锈钢 Stainless Steel				45、35CrMoA				

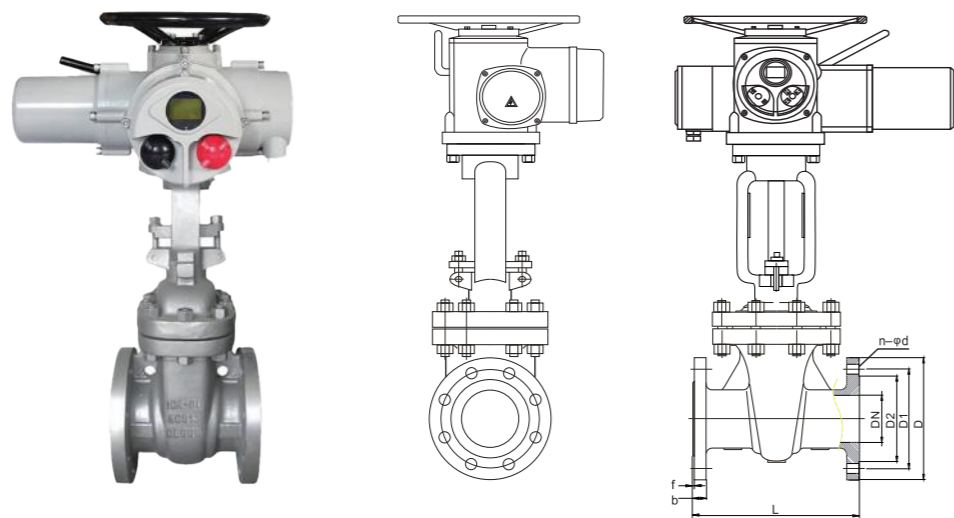


电动闸阀主要外形及连接尺寸(国标) Main Outline and Connecting(GB)

MEDLE	Inch	D	D1	D2	n-d	b	f	L	
1.0	DN15	1/2"	95	65	45	4-14	14	2	130
	DN20	3/4"	105	75	55	4-14	16	2	150
	DN25	1"	115	85	65	4-14	16	2	160
	DN32	1-1/4"	140/135	100	78	4-18	18	2	180
	DN40	1-1/2"	150/145	110	85	4-18	18	2	200
	DN50	2"	165/160	125	100	4-18	20	2	180
	DN65	2-1/2"	185/180	145	120	4-18	20	2	195
	DN80	3"	195	160	135	8-18	20	2	210
	DN100	4"	215	180	155	8-18	22	2	230
	DN125	5"	245	210	185	8-18	22	2	255
	DN150	6"	280	240	210	8-22	24	2	280
	DN200	8"	335	295	265	8-22	24	2	330
	DN250	10"	390	350	320	12-22	26	2	380
	DN300	12"	440	400	368	12-22	26	2	420
	DN350	14"	500	460	428	16-22	26	2	450
	DN400	16"	565	515	532	16-26	26	2	480
DN450	18"	615	656	585	20-26	28	2	510	
DN500	20"	670	620	685	20-26	28	2	540	
1.6	DN15	1/2"	95	65	45	4-14	14	2	130
	DN20	3/4"	105	75	55	4-14	14	2	150
	DN25	1"	115	85	65	4-14	14	2	160
	DN32	1-1/4"	140/135	100	75	4-18	16	2	180
	DN40	1-1/2"	150/145	110	85	4-18	16	3	200
	DN50	2"	165/160	125	100	4-18	16	3	250
	DN65	2-1/2"	185/180	145	120	4-18	18	3	265
	DN80	3"	200/195	160	135	8-18	20	3	280
	DN100	4"	220/215	180	155	8-18	20	3	300
	DN125	5"	220/215	210	185	8-18	22	3	325
	DN150	6"	250/245	240	210	8-23	24	3	350
	DN200	8"	285/280	295	265	12-23	26	3	400
	DN250	10"	340/335	355	320	12-25	30	3	450
	DN300	12"	405	410	375	12-25	30	4	500
	DN350	14"	460	470	435	16-30	34	4	550
	DN400	16"	520	525	485	16-30	36	4	600
DN450	18"	580/640	585	545	20-30	40	4	650	
DN500	20"	715/705	650	608	20-34	44	4	700	

电动闸阀主要外形及连接尺寸(美标) Main Outline and Connecting(ANSI)

MEDLE	Inch	D	D1	D2	n-d	b	f	L	
150 Class	DN15	1/2"	90	60.3	34.9	4-16	11.5	2	108
	DN20	3/4"	100	69.9	42.9	4-16	13	2	117
	DN25	1"	110	79.4	50.8	4-16	14.5	2	127
	DN32	1-1/4"	115	88.9	63.5	4-16	16	2	140
	DN40	1-1/2"	125	98.4	73	4-16	17.5	2	165
	DN50	2"	150	120.7	92.1	4-19	19.5	2	178
	DN65	2-1/2"	180	139.7	104.8	4-19	22.5	2	190
	DN80	3"	190	152.4	127	4-19	24	2	203
	DN100	4"	230	190.5	157.2	8-19	24	2	229
	DN125	5"	255	215.9	185.7	8-22	24	2	254
	DN150	6"	280	241.3	215.9	8-22	25.5	2	267
	DN200	8"	345	298.5	270	8-22	29	2	292
DN250	10"	405	362	323.8	12-25	30.5	2	330	
DN300	12"	485	431.8	381	12-25	32	2	356	
DN350	14"	535	476.3	412.8	12-29	35	2	381	
DN400	16"	595	539.8	469.9	16-29	37	2	406	
300 Class	DN15	1/2"	95	66.7	34.9	4-16	14.5	2	140
	DN20	3/4"	115	82.6	42.9	4-19	16	2	152
	DN25	1"	125	88.9	50.8	4-19	17.5	2	165
	DN32	1-1/4"	135	98.4	63.5	4-19	19.5	2	178
	DN40	1-1/2"	155	114.3	73	4-22	21	2	190
	DN50	2"	165	127	92.1	8-19	22.5	2	216
	DN65	2-1/2"	190	149.2	104.8	8-22	25.5	2	241
	DN80	3"	210	168.3	127	8-22	29	2	282
	DN100	4"	255	200	157.2	8-22	32	2	305
	DN125	5"	280	235	185.7	8-22	35	2	381
	DN150	6"	320	269.9	215.9	12-22	37	2	403
	DN200	8"	380	330.2	269.9	12-25	41.5	2	419
	DN250	10"	445	387.4	323.8	16-29	48	2	457
	DN300	12"	520	450.8	381	16-32	51	2	502
	DN350	14"	585	515.4	412.8	20-32	54	2	762
	DN400	16"	650	571.5	469.9	20-35	57.5	2	838
600 Class	DN15	1/2"	95	66.7	34.9	4-16	21	6.4	165
	DN20	3/4"	115	82.6	42.9	4-19	23	6.4	190
	DN25	1"	125	88.9	50.8	4-19	24	6.4	216
	DN32	1-1/4"	135	98.4	63.5	4-19	27.5	6.4	229
	DN40	1-1/2"	155	114.3	73	4-22	29	6.4	241
	DN50	2"	165	127	92.1	8-19	32	6.4	292
	DN65	2-1/2"	190	149.2	104.8	8-22	35	6.4	330
	DN80	3"	210	168.3	127	8-22	38.5	6.4	356
	DN100	4"	275	215.9	157.2	8-25	45	6.4	432
	DN125	5"	330	266.7	185.7	8-29	51.5	6.4	508
	DN150	6"	355	292.1	215.9	12-29	54.5	6.4	559
	DN200	8"	420	349.2	269.9	12-32	62	6.4	660
	DN250	10"	510	431.8	323.8	16-35	70	6.4	787
	DN300	12"	560	489	381	20-35	73.5	6.4	838
	DN350	14"	605	527	412.8	20-39	76.5	6.4	889



电动截止阀

VE30-EGO VINCER ELECTRIC GLOBE VALVE

使用我们的电动截止阀彻底改变您的工业自动化，提供无与伦比的精度和轻松的操作，以优化系统内的流体控制。

Revolutionize your industrial automation with our electric globe valve, providing unparalleled precision and effortless operation to optimize fluid control within your systems.



技术规范 Technical Parameter

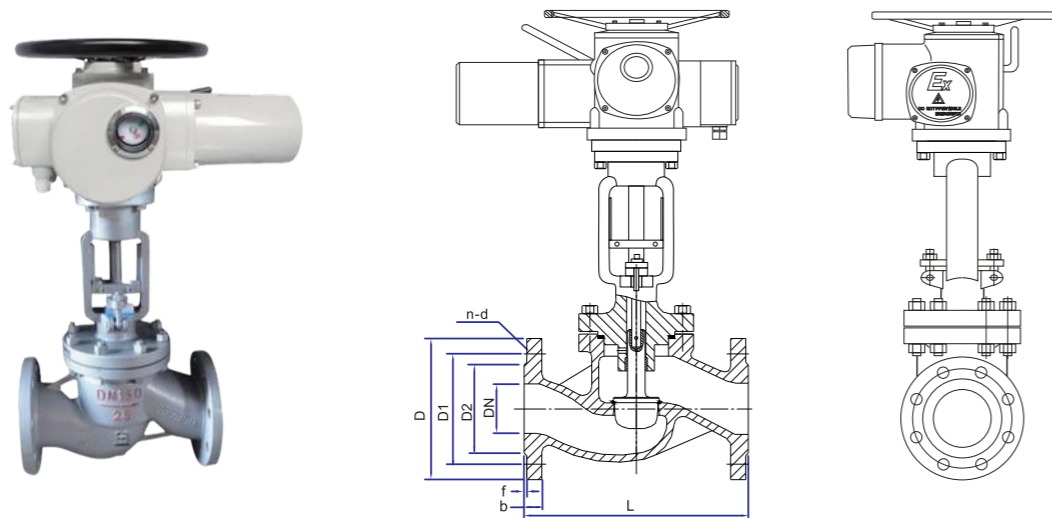
- 设计与制造 Design and Manufacture: GB 12235、ANSI B16.34 B51873、JIS B2071 B2081
- 结构长度 Structure Length: GB 12221、ASME B16.10、JIS B2002
- 压力-温度等级 Pressure-temperature rating: GB/T 12224、ASME B16.34、JIS B2212 B2214
- 连接法兰 Connection flange: JB/T79/82~1994、GB 9113、HG20592-20635、ANSI B16.5 JIS B2071 B2081
- 试验与检验 Test and Inspection: JB/T 9092-1999、GB 13927、API 598、JIS B2003

主要零件材质表 Main Parts Materials

零件名称 Component	材质 Material								
	CF8	CF3	CF8M	CF3M	WCB	LCB	WC6	WC9	C5
阀体/阀盖 Body/Bonnet	CF8	CF3	CF8M	CF3M	WCB	LCB	WC6	WC9	C5
阀瓣 Wedge	CF8	CF3	CF8M	CF3M	WCB	LCB	WC6	WC9	C5
阀杆 Stem	F304	F304L	F316	F316L	2CR13	F304	F304	F304	F304
阀杆螺母 Stem Nut	铝青铜 Aluminium Bronze								
填料 Packing	PTFE/柔性石墨				石墨 Graphite				
垫片 Gasket	PTFE/金属缠绕垫				石墨 Graphite				
压盖 Gland	CF8	CF3	CF8M	CF3M	WCB	LCB	WC6	WC9	C5
螺栓 Bolt	不锈钢 Stainless Steel				35CrMoA				
螺母 Nut	不锈钢 Stainless Steel				45、35CrMoA				
手轮 Handwheel	不锈钢 Stainless Steel				铸钢 Cast Steel				

电动闸阀主要外形及连接尺寸(日标) Main Outline and Connecting(JIS)

MEDLE	Inch	D	D1	D2	n-d	b	f	L	
10K	DN15	1/2"	95	70	52	4-15	12	1	108
	DN20	3/4"	100	75	58	4-15	14	1	117
	DN25	1"	125	90	70	4-19	14	1	127
	DN32	1-1/4"	135	100	80	4-19	16	2	140
	DN40	1-1/2"	140	105	85	4-19	16	2	165
	DN50	2"	155	120	100	4-19	16	2	178
	DN65	2-1/2"	175	140	120	4-19	18	2	191
	DN80	3"	185	150	130	8-19	18	2	203
	DN100	4"	210	175	155	8-19	18	2	229
	DN125	5"	250	210	185	8-23	20	2	254
	DN150	6"	280	240	215	8-23	22	2	267
	DN200	8"	330	290	265	12-23	22	2	292
	DN250	10"	400	355	325	12-25	24	2	330
	DN300	12"	445	400	370	16-25	24	2	381
DN350	14"	490	445	415	16-25	26	2	381	
DN400	16"	560	510	475	16-25	28	2	406	
20K	DN15	1/2"	95	70	52	4-15	14	1	140
	DN20	3/4"	100	75	58	4-15	16	1	152
	DN25	1"	125	90	70	4-19	16	1	165
	DN32	1-1/4"	135	100	80	4-19	18	2	178
	DN40	1-1/2"	140	105	85	4-19	18	2	190
	DN50	2"	155	120	100	8-19	18	2	216
	DN65	2-1/2"	175	140	120	8-19	20	2	241
	DN80	3"	200	160	135	8-23	22	2	283
	DN100	4"	225	185	160	8-23	24	2	305
	DN125	5"	270	225	195	8-25	26	2	381
	DN150	6"	305	260	230	12-25	28	2	403
	DN200	8"	350	305	275	12-25	30	2	419
	DN250	10"	430	380	345	12-27	34	2	457
	DN300	12"	480	430	395	16-27	35	3	502
DN350	14"	540	480	440	16-33	40	3	762	
DN400	16"	605	540	495	16-33	46	3	838	

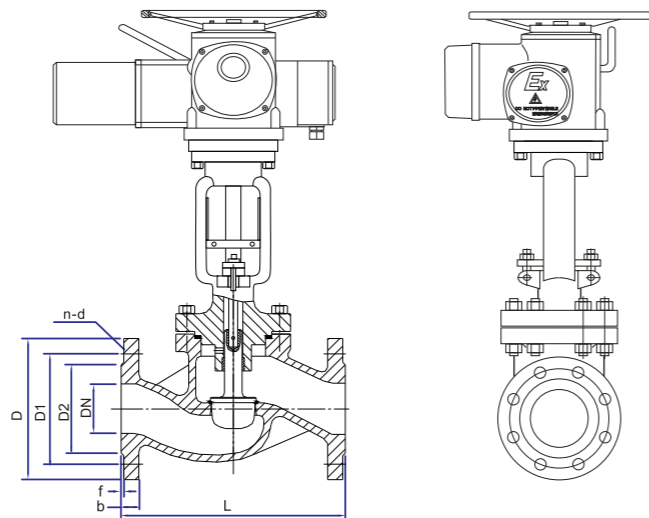


电动截止阀主要外形及连接尺寸(国标) Main Outline and Connecting(GB)

MEDLE	Inch	D	D1	D2	n-d	b	f	L	
1.0	DN15	1/2"	95	65	45	4-14	14	2	130
	DN20	3/4"	105	75	55	4-14	14	2	150
	DN25	1"	115	85	65	4-14	14	2	160
	DN32	1-1/4"	140/135	100	75	4-18	16	2	180
	DN40	1-1/2"	150/145	110	85	4-18	16	2	200
	DN50	2"	165/160	125	100	4-18	16	3	230
	DN65	2-1/2"	185/180	145	120	4-18	18	3	290
	DN80	3"	200/195	160	135	8-18	20	3	310
	DN100	4"	220/215	180	155	8-18	20	3	350
	DN125	5"	245	210	185	8-18	22	2	400
	DN150	6"	280	240	210	8-22	24	2	480
	DN200	8"	335	295	265	8-22	24	2	500
	DN250	10"	390	350	320	12-22	26	2	550
	DN300	12"	440	400	368	12-22	26	2	750
	DN350	14"	500	460	428	16-22	26	2	850
	DN400	16"	565	515	482	16-26	26	2	950
DN450	18"	615	656	532	20-26	28	2	1050	
DN500	20"	670	620	585	20-26	28	2	1150	
1.6	DN15	1/2"	95	65	45	4-14	14	2	130
	DN20	3/4"	105	75	55	4-14	14	2	150
	DN25	1"	115	85	65	4-14	14	2	160
	DN32	1-1/4"	140/135	100	75	4-18	16	2	180
	DN40	1-1/2"	150/145	110	85	4-18	16	2	200
	DN50	2"	165/160	125	100	4-18	16	3	230
	DN65	2-1/2"	185/180	145	120	4-18	18	3	290
	DN80	3"	200/195	160	135	8-18	20	3	310
	DN100	4"	220/215	180	155	8-18	20	3	350
	DN125	5"	220/215	210	185	8-18	22	3	400
	DN150	6"	250/245	240	210	8-23	24	3	480
	DN200	8"	285/280	295	265	12-23	26	3	500
	DN250	10"	340/335	355	320	12-25	30	3	550
	DN300	12"	405	410	375	12-25	30	3	750
	DN350	14"	460	470	435	16-30	34	4	850
	DN400	16"	520	525	485	16-30	36	4	950
DN450	18"	580/640	585	545	20-30	40	4	1050	
DN500	20"	715/705	650	608	20-34	44	4	1150	

电动截止阀主要外形及连接尺寸(美标) Main Outline and Connecting(ANSI)

MEDLE	Inch	D	D1	D2	n-d	b	f	L		
150 Class	DN15	1/2"	90	60.3	34.9	4-16	11.5	2	108	
	DN20	3/4"	100	69.9	42.9	4-16	13	2	117	
	DN25	1"	110	79.4	50.8	4-16	14.5	2	127	
	DN32	1-1/4"	115	88.9	63.5	4-16	16	2	140	
	DN40	1-1/2"	125	98.4	73	4-16	17.5	2	165	
	DN50	2"	150	120.7	92.1	4-19	19.5	2	203	
	DN65	2-1/2"	180	139.7	104.8	4-19	22.5	2	216	
	DN80	3"	190	152.4	127	4-19	24	2	241	
	DN100	4"	230	190.5	157.2	8-19	24	2	292	
	DN125	5"	255	215.9	185.7	8-22	24	2	356	
	DN150	6"	280	241.3	215.9	8-22	25.5	2	406	
	DN200	8"	345	298.5	269.9	8-22	29	2	495	
300 Class	DN250	10"	405	362	323.8	12-25	30.5	2	622	
	DN300	12"	485	431.8	381	12-25	32	2	698	
	DN350	14"	535	476.3	412.8	12-29	35	2	787	
	DN400	16"	595	539.8	469.9	16-29	37	2	914	
	600 Class	DN15	1/2"	95	66.7	34.9	4-16	14.5	2	152
		DN20	3/4"	115	82.6	42.9	4-19	16	2	178
		DN25	1"	125	88.9	50.8	4-19	17.5	2	203
		DN32	1-1/4"	135	98.4	63.5	4-19	19.5	2	216
		DN40	1-1/2"	155	114.3	73	4-22	21	2	229
		DN50	2"	165	127	92.1	8-19	22.5	2	267
		DN65	2-1/2"	190	149.2	104.8	8-22	25.5	2	292
		DN80	3"	210	168.3	127	8-22	29	2	318
DN100		4"	255	200	157.2	8-22	32	2	356	
DN125		5"	280	235	185.7	8-22	35	2	400	
DN150		6"	320	269.9	215.9	12-22	37	2	445	
DN200		8"	380	330.2	269.9	12-25	41.5	2	559	
600 Class	DN250	10"	445	387.4	323.8	16-29	48	2	622	
	DN300	12"	520	450.8	381	16-32	51	2	711	
	DN350	14"	585	515.4	412.8	20-32	54	2	838	
	DN400	16"	650	571.5	469.9	20-35	57.5	2	864	
	600 Class	DN15	1/2"	95	66.7	34.9	4-16	21	6.4	165
		DN20	3/4"	115	82.6	42.9	4-19	23	6.4	190
		DN25	1"	125	88.9	50.8	4-19	24	6.4	216
		DN32	1-1/4"	135	98.4	63.5	4-19	27.5	6.4	229
		DN40	1-1/2"	155	114.3	73	4-22	29	6.4	241
		DN50	2"	165	127	92.1	8-19	32	6.4	292
		DN65	2-1/2"	190	149.2	104.8	8-22	35	6.4	330
		DN80	3"	210	168.3	127	8-22	38.5	6.4	356
DN100		4"	275	215.9	157.2	8-25	45	6.4	432	
DN125		5"	330	266.7	185.7	8-29	51.5	6.4	508	
DN150		6"	355	292.1	215.9	12-29	54.5	6.4	559	
DN200		8"	420	349.2	269.9	12-32	62	6.4	660	
600 Class	DN250	10"	510	431.8	323.8	16-35	70	6.4	787	
	DN300	12"	560	489	381	20-35	73.5	6.4	838	
	DN350	14"	605	527	412.8	20-39	76.5	6.4	889	



电动刀闸阀

VE30-EKG VINCER ELECTRIC KNIFE GATE VALVE

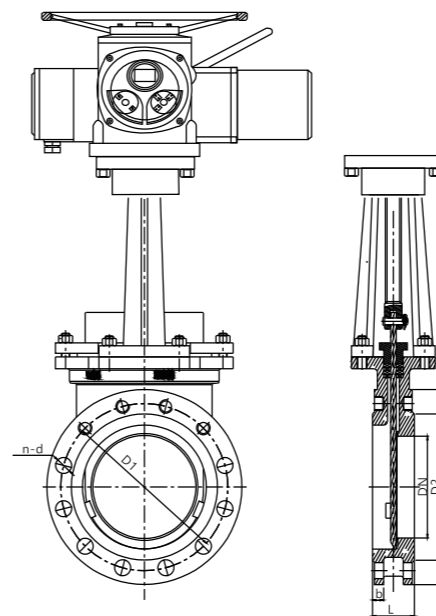
使用我们的电动刀闸阀升级您的工业自动化，结合先进技术在您的系统中实现精确的流体控制和无缝操作。

Upgrade your industrial automation with our electric knife gate valve, combining advanced technology for precise fluid control and seamless operation in your systems.



电动截止阀主要外形及连接尺寸(日标) Main Outline and Connecting(JIS)

MEDLE	Inch	D	D1	D2	n-d	b	f	L	
10K	DN15	1/2"	95	70	52	4-15	12	1	108
	DN20	3/4"	100	75	58	4-15	14	1	117
	DN25	1"	125	90	70	4-19	14	1	127
	DN32	1-1/4"	135	100	80	4-19	16	2	140
	DN40	1-1/2"	140	105	85	4-19	16	2	165
	DN50	2"	155	120	100	4-19	16	2	203
	DN65	2-1/2"	175	140	120	4-19	18	2	216
	DN80	3"	185	150	130	8-19	18	2	241
	DN100	4"	210	175	155	8-19	18	2	292
	DN125	5"	250	210	185	8-23	20	2	356
	DN150	6"	280	240	215	8-23	22	2	406
	DN200	8"	330	290	265	12-23	22	2	485
	DN250	10"	400	355	325	12-25	24	2	622
DN300	12"	445	400	370	16-25	24	2	698	
DN350	14"	490	445	415	16-25	26	2	787	
DN400	16"	560	510	475	16-25	28	2	914	
20K	DN15	1/2"	95	70	52	4-15	14	1	154
	DN20	3/4"	100	75	58	4-15	16	1	178
	DN25	1"	125	90	70	4-19	16	1	203
	DN32	1-1/4"	135	100	80	4-19	18	2	216
	DN40	1-1/2"	140	105	85	4-19	18	2	229
	DN50	2"	155	120	100	8-19	18	2	267
	DN65	2-1/2"	175	140	120	8-19	20	2	292
	DN80	3"	200	160	135	8-23	22	2	318
	DN100	4"	225	185	160	8-23	24	2	356
	DN125	5"	270	225	195	8-25	26	2	400
	DN150	6"	305	260	230	12-25	28	2	445
	DN200	8"	350	305	275	12-25	30	2	559
	DN250	10"	430	380	345	12-27	34	2	622
DN300	12"	480	430	395	16-27	35	3	711	



产品参数 Technical Parameters

公称通径 Nominal Size	DN50~DN1000
阀体材质 Body Material	铸铁、碳钢(WCB)、不锈钢(CF8、CF8M) Cast Iron, Carbon Steel(WCB), Stainless Steel(CF8, CF8M)
连接类型 Connection Type	法兰 Flanged Type
压力等级 Pressure Rating	PN1.0
工作温度 Operating temperature	-30°C ~300°C
阀板材质 Disc Material	WCB、铸铁、不锈钢(CF8、CF8M) WCB, Cast Iron, Stainless Steel(CF8, CF8M)
阀杆材质 Stem Material	不锈钢 Stainless Steel (CF8, CF8M)
安装方位 Installation position	任意角度 Any
适用介质 Applicable Medium	泥浆、物料、粘稠、颗粒类流体 Mud, material, viscous, granular fluid

主要外形及连接尺寸(1.0MPa) Main Outline and Connecting (1.0MPa)

Size	2"	2-1/2"	3"	4"	5"	6"	8"	10"	12"	14"	16"	18"	20"
DN	50	65	80	100	125	150	200	250	300	350	400	450	500
D	160	180	195	215	245	280	335	390	440	500	565	615	670
D1	125	145	160	180	210	240	295	350	400	460	515	565	620
D2	100	120	135	155	185	210	265	320	368	428	482	532	585
N-d	4-16	4-16	8-16	8-16	8-16	8-20	8-20	12-20	12-20	16-20	16-24	20-24	20-24
b	18	18	18	18	18	23	23	23	23	23	27	27	27
L	50	50	50	50	50	60	60	70	80	90	100	110	114

精小型电动球阀
Miniature Type Motorized Ball Valve



VE-M 精小型电动螺纹球阀
VE-M Miniature Motorized Ball Valve



VE-MT 精小型电动三通螺纹球阀
VE-MT Miniature Motorized 3-Way Ball Valve



VE-MHT 精小型电动三通螺纹球阀
VE-MHT Miniature Motorized 3-Way Ball Valve



VE-MH 精小型电动螺纹球阀
VE-MH Miniature Motorized 3-piece Ball Valve

精小型电动球阀
MINIATURE TYPE MOTORIZED BALL VALVE



VE-M 精小型电动螺纹球阀

VE-M MINIATURE MOTORIZED BALL VALVE

了解我们的紧凑型电动二通球阀，用于节省空间的流体控制。为您提供灵活且量身定制的解决方案。

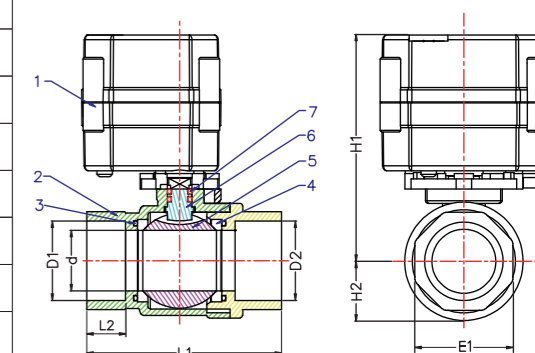
Explore our compact electric 2-way ball valve for space-saving fluid control. Offer a flexible and tailored solution to you.

产品参数 Technical Parameters

产品规格	Product Specifications	DN10~DN50
最大工作压力	Max. Working Pressure	1.0MPa
流通介质	Circulation Medium	Water, Air
额定电压	Rated Voltage	AC/DC 110-230V, DC9-24V (Optional)
开关的时间	Open/Close Time	≤7S, ≤10S, ≤12S
寿命	Life Time	70,000 Times
阀体材料	Valve Material	SS304, SS316 (Optional)
执行器材料	Actuator Material	Engineering Plastics
执行器扭矩	Torque Output	2.0N.M, 10.0N.M, 15N.M
环境温度	Ambient Temperature	-15°C-50°C
液体温度	Liquid Temperature	2°C-90°C
线长	Cable length	0.5m, 1.5m (Optional)
手动方式	Manual Override	YES or NO (Optional)
阀开关指示窗	Indicator	YES or NO (Optional)
旋转角度	Actuator rotation	90°
密封件	Sealing Material	FKM & PTFE
防护等级	Protection Class	IP67

主要零件材质表 Main Parts Materials

NO.	名称 Name	材质 material
1	执行器 Actuator	PPO A20/A100
2	阀体 Body Cover	STAINLESS STEEL 304
3	O型圈 O-Ring	FKM
4	密封件 Sealing	PTFE
5	球体 Ball	STAINLESS STEEL 304
6	阀杆 Stem	STAINLESS STEEL 304
7	O型圈 O-Ring	FKM



外形尺寸图 Outline Size Dimension

Size	D1/D2	d	L1	L2	E1	H1	H2
DN10	3/8"	10	51	12	21	82	14
DN15	1/2"	15	63	14	25	83	17
DN20	3/4"	20	72	17	31	87	20
DN25	1"	25	81	18	38	95	24
DN32	1-1/4"	32	102	23	47	122	31
DN40	1-1/2"	40	115	25	52	130	36
DN50	2"	50	130	25	66	138	45

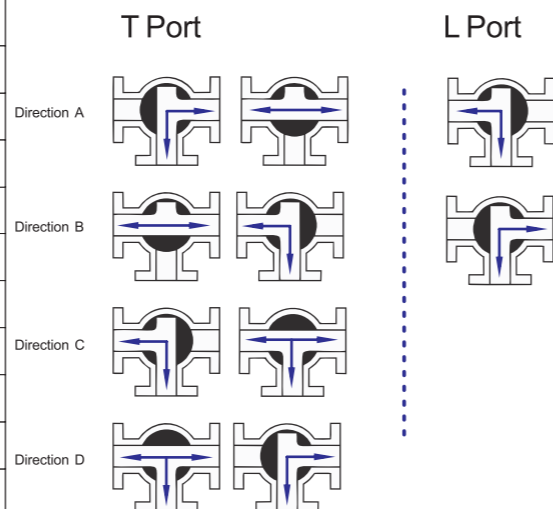
VE-MT 精小型电动三通球阀

VE-MT MINIATURE MOTORIZED 3-WAY BALL VALVE

探索我们的精小型电动三通球阀的效率，其紧凑的设计可在您的系统中实现精确的流体控制。
Discover the efficiency of our miniature electric 3-way ball valve with a compact design for precise fluid control in your systems.

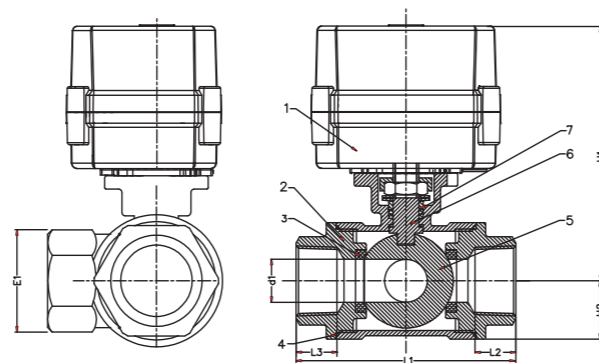
产品参数 Technical Parameters

产品规格	Product Specifications	DN10~DN25
最大工作压力	Max. Working Pressure	1.0MPa
流通介质	Circulation Medium	Water, Air
额定电压	Rated Voltage	AC/DC 110-230V, DC9-24V (Optional)
开关的时间	Open/Close Time	≤15S
寿命	Life Time	70,000 Times
阀体材料	Valve Material	SS304, SS316 (Optional)
执行器材料	Actuator Material	Engineering Plastics
执行器扭矩	Torque Output	10.0N.M, 15.0N.M
环境温度	Ambient Temperature	-15°C-50°C
液体温度	Liquid Temperature	2°C-90°C
线长	Cable length	0.5m, 1.5m (Optional)
手动方式	Manual Override	NO
阀开关指示窗	Indicator	YES or NO (Optional)
旋转角度	Actuator rotation	90°
密封件	Sealing Material	FKM & PTFE
防护等级	Protection Class	IP67



主要零件材质表 Main Parts Materials

NO.	名称 Name	材质 material
1	执行器 Actuator	PPO A100
2	阀体 Body Cover	STAINLESS STEEL 304
3	O型圈 O-Ring	FKM
4	密封件 Sealing	PTFE
5	球体 Ball	STAINLESS STEEL 304
6	阀杆 Stem	STAINLESS STEEL 304
7	O型圈 O-Ring	FKM



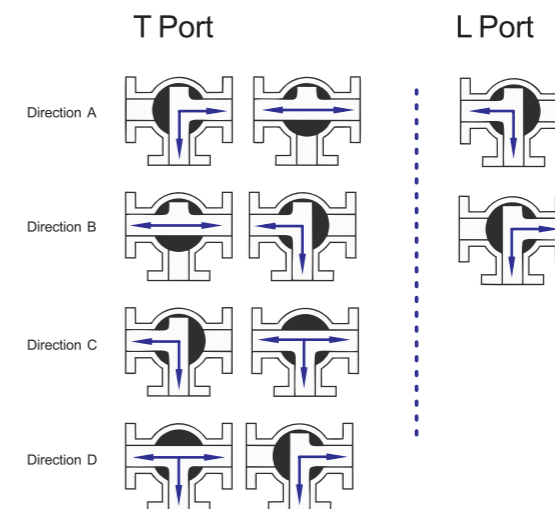
外形尺寸图 Outline Size Dimension

Size	D1/D2	d	L1	L2/L3	E1	H1	H2
DN10	3/8"	6	51	11	20.2	66	11
DN15	1/2"	12	70	16	27	72	17
DN20	3/4"	15	75	16	31	76.5	20.5
DN25	1"	18	85	17	38	78	20.5

VE-MHT 精小型电动三通球阀

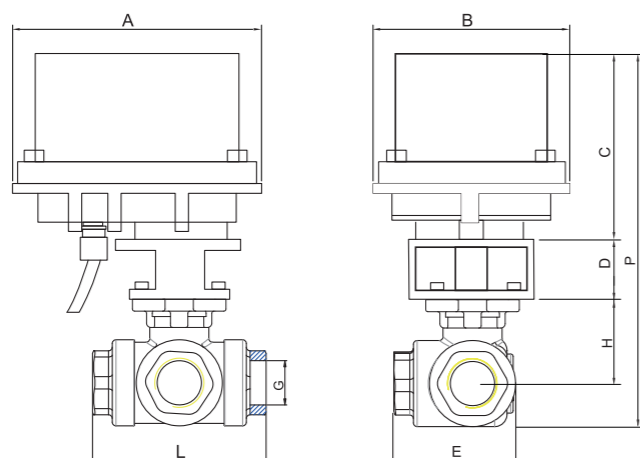
VE-MHT MINIATURE MOTORIZED 3-WAY BALL VALVE

使用我们紧凑、高性能的微型电动三通球阀提升您的系统。易于安装、高扭矩和节省空间的设计，可实现高效的流体控制。
Elevate your system with our compact, high-performance miniature electric 3-way ball valve. Easy installation, high torque, and space-saving design for efficient fluid control.



产品参数 Technical Parameters

产品规格	Product Specifications	DN15	DN20	DN25	DN32	DN40	DN50	DN65
最大工作压力	Max. Working Pressure	1.6MPa						
流通介质	Circulation Medium	Water, Air						
额定电压	Rated Voltage	AC/DC 110-230V, DC9-24V (Optional)						
工作电流	Working Current	50mA~300mA		300mA~1.5A		500mA~2.0mA		
开关的时间	Open/Close Time	8~11S		9~13S		10~15S		
执行器扭矩	Torque Output	30NM		50NM		150NM		
寿命	Life Time	100,000 Times						
阀体材料	Valve Material	SS304, SS316 (Optional)						
执行器材料	Actuator Material	Engineering Plastics						
环境温度	Ambient Temperature	-15°C-50°C						
液体温度	Liquid Temperature	-20°C~120°C						
手动方式	Manual Override	NO						
阀开关指示窗	Indicator	NO						
垫座	Gasket	PTFE						
密封件	Sealing Material	PTFE						
防护等级	Protection Class	IP66						



主要外形及连接尺寸 Outline and Connecting Size

SIZE	G	A	B	C	D	E	H	L	P
DN15	1/2"	89	74	61	31	53	53	72	157
DN20	3/4"	89	74	73	31	60	60	80	162
DN25	1"	106	88	90	33	67	67	88	210
DN32	1-1/4"	106	88	90	33	100	100	124	230
DN40	1-1/2"	106	88	90	44	107	107	138	260
DN50	2"	108	107	90	44	115	115	145	270
DN65	2-1/2"	117	107	107	48	136	136	170	325

VE-MH 精小型电动螺纹球阀

VE-MH MINIATURE MOTORIZED 3-PIECE BALL VALVE

高性能、大扭矩微型电动二通球阀，为您提供易于安装、节省安装空间的阀门解决方案。

High-performance, high-torque miniature electric two-way ball valve, providing you with a valve solution that is easy to install and saves installation space.



产品参数 Technical Parameters

产品规格	Product Specifications	DN15	DN20	DN25	DN32	DN40	DN50	DN65
最大工作压力	Max. Working Pressure	1.6MPa						
流通介质	Circulation Medium	Water, Air						
额定电压	Rated Voltage	AC/DC 110-230V, DC9-24V (Optional)						
工作电流	Working Current	50mA~300mA		300mA~1.5A			500mA~2.0mA	
开关的时间	Open/Close Time	8~11S		9~13S			10~15S	
执行器扭矩	Torque Output	30NM		50NM			150NM	
寿命	Life Time	100,000 Times						
阀体材料	Valve Material	SS304, SS316 (Optional)						
执行器材料	Actuator Material	Engineering Plastics						
环境温度	Ambient Temperature	-15°C~50°C						
液体温度	Liquid Temperature	-20°C~120°C						
手动方式	Manual Override	NO						
阀开关指示窗	Indicator	NO						
垫座	Gasket	PTFE						
密封件	Sealing Material	PTFE						
防护等级	Protection Class	IP66						

主要外形及连接尺寸 Outline and Connecting Size

SIZE	G	A	B	C	D	H	L
DN15	1/2"	89	74	73	25	62	72
DN20	3/4"	89	74	73	25	73	85
DN25	1"	89	74	73	25	85	90
DN32	1-1/4"	89	74	73	25	96	117
DN40	1-1/2"	106	88	98	33	110	136
DN50	2"	106	88	98	33	122	151

