

伟赛尔 VINCER 气动阀产品目录册 PRODUCT CATALOG

Quality valve and unbeatable value



GET IN TOUCH
VALVE CONSULTANT

Hebe Wong

+86 13826949015

www.vincervalve.com



关于伟赛尔

ABOUT VINCER

VINCER成立于2020年，是一家创新型自动化阀门科技公司。旨在为我们的客户提供优质阀门和无与伦比的价值解决方案。

我们专注于为各个行业提供高质量的自动化阀门解决方案，提供广泛的产品，例如驱动球阀、蝶阀、闸阀和控制阀。我们的阀门性能可靠，提供精确控制，满足海水淡化、废水处理、可再生能源等行业的流体控制需求。

拥有一支由经验丰富的工程师和销售专业人员组成的专业团队，我们优先考虑客户满意度并提供全面的技术支持。我们致力于持续创新，提供最先进的解决方案，优先考虑产品性能、可靠性和成本效益。

此外，我们认真履行社会责任，实施环保措施并参与社区活动。

选择 VINCER 作为您可靠的、以客户为中心的自动化阀门供应商。联系我们获取更多信息。

.....
Founded in 2020, VINCER is an innovative automation valve technology company. Aim to provide Quality Valves and Unbeatable Value solutions to our clients.

We specialize in high-quality automation valve solutions for various industries, offering a wide range of products like actuated ball valves, butterfly valves, gate valves and control valves. Our valves are reliable, provide precise control, and meet the fluid control needs of industries such as desalination, wastewater treatment, renewable energy, and more.

With a dedicated team of experienced engineers and sales professionals, we prioritize customer satisfaction and provide comprehensive technical support. We are committed to continuous innovation, delivering state-of-the-art solutions that prioritize product performance, reliability, and cost-effectiveness.

Additionally, we take our social responsibility seriously, implementing environmental measures and engaging in community activities.

Choose VINCER as your reliable and customer-centric automation valve supplier. Contact us for more information.



服务与支持

SERVICE AND SUPPORT

◆ 质量保证

通过严格的测试和先进的技术确保了顶级品质的阀门，满足客户交付前的要求。

Quality Assurance
Top-quality valves ensured through rigorous testing and advanced technology, meeting customer requirements before delivery.

◆ 定制化解决方案

由经验丰富的工程师定制解决方案，为特定客户需求提供从设计到维护的支持。

Customized Solutions
Tailored solutions by experienced engineers, supporting from design to maintenance for specific customer needs.

◆ 交货及时

高效的生产可确保按时交付产品，并提供灵活的选择来满足项目进度。

Timely Delivery
Efficient production ensures on-time product delivery, offering flexible options to meet project schedules.

◆ 售后服务

除了交付之外，我们还提供响应迅速的解决方案，以获得满意的客户体验。

After-Sales Service
Beyond delivery, we provide responsive solutions for a satisfactory customer experience.

◆ 信任与协作

我们以信任、诚实和透明的方式建立持久的关系，为共同的成功而共同努力。

Trust and Collaboration
Building lasting relationships with trust, honesty, and transparency, we work together for mutual success.

工厂展示

FACTORY DISPLAY



目录

CONTENTS

伟赛尔气动执行器

Pneumatic Actuators

- AT执行器
AT Pneumatic actuator 7
- AW执行器
AW Pneumatic actuator 8

伟赛尔气动球阀

Pneumatic Ball Valves

- 气动三片式螺纹球阀
VE11-3PCS VINCER Pneumatic 3-Piece Ball Valve 16
- 气动法兰球阀
VP11-F VINCER Pneumatic Flanged Ball Valve 18
- 气动三通法兰球阀
VP11-F3 VINCER Pneumatic 3-Way Flanged Ball Valve 24
- 气动四通法兰球阀
VP11-F4 VINCER Pneumatic 4-Way Flanged Ball Valve 28
- 气动塑料球阀
VP11-P VINCER Pneumatic Plastic Ball Valve 29
- 气动塑料三通球阀
VP11-P3 VINCER Pneumatic 3-Way Plastic Ball Valve 31
- 气动卡箍二通球阀
VP11-K VINCER Pneumatic Sanitary Clamp Ball Valve 32
- 气动卡箍三通球阀
VP11-K3 VINCER Pneumatic Clamp Sanitary 3-Way Ball Valve 33
- 气动高压球阀
VP11-H VINCER Pneumatic High-Pressure Ball Valve 34
- 气动高压三通球阀
VP11-H3 VINCER Pneumatic High-Pressure 3-Way Ball Valve 35
- 气动 PTFE 衬氟球阀
VP11-F-PTFE Pneumatic PTFE-Lined Ball Valve 36
- 气动薄型球阀
VP11-I VINCER Pneumatic Wafer thin ball valve 37
- 气动V型球阀
VP11-V VINCER Pneumatic V-Port Ball Valve 38

- 气动三通螺纹球阀
VP11-T3 VINCER Pneumatic Threaded 3-Way Ball Valve 40

- 气动三片式焊接球阀
VP11-W VINCER Pneumatic 3-Piece Welded Ball Valve 41

伟赛尔气动蝶阀

Pneumatic Butterfly Valves

- 气动对夹蝶阀
VP12 VINCER Pneumatic Wafer Butterfly Valve 43
- 气动法兰蝶阀
VP12-F VINCER Pneumatic Flanged Butterfly Valve 45
- 气动塑料蝶阀
VP12-P VINCER Pneumatic Plastic Butterfly Valve 46
- 气动卫生级蝶阀
VP12-K VINCER Pneumatic Sanitary Butterfly Valve 47
- 气动PTFE衬氟蝶阀
VP12-PTFE VINCER Pneumatic PTFE-Lined Butterfly Valve 48
- 气动硬密封蝶阀
VP12-HA VINCER Pneumatic Hard-Seat Butterfly Valve 50
- 气动凸耳蝶阀
VP12-LUG VINCER Pneumatic Lugged Butterfly Valve 53

伟赛尔气动直行程阀门

Linear Actuator Valves

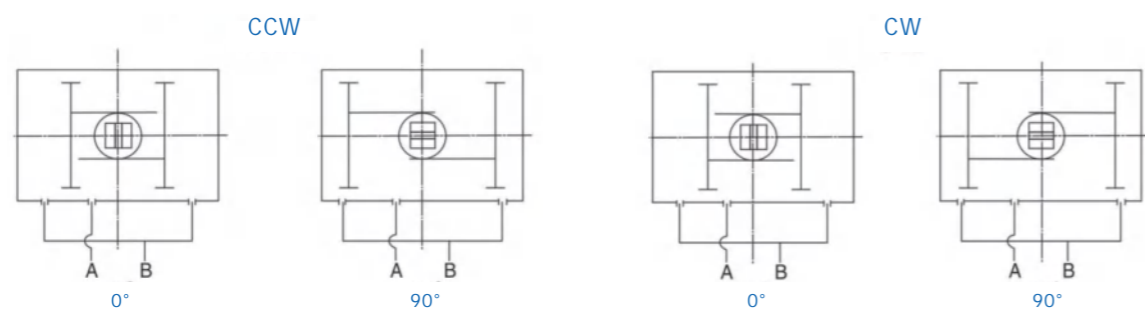
- 气动刀闸阀
VP13-PKG VINCER Pneumatic Knife Gate valve 56
- 气动闸阀
VP13-PGA VINCER Pneumatic Gate Valve 57
- 气动截止阀
VP13-PGO VINCER Pneumatic Globe Valve 58

伟赛尔气动执行器

PNEUMATIC ACTUATORS

双作用执行器

Double Acting Actuators



A口进气, 压缩空气推动活塞向外运动, 使执行输出轴顺时针旋转(0°→90°), B口排气。
B口进气, 压缩空气推动活塞向内运动, 使执行器输出轴顺时针旋转(90°→0°), A口排气。

Air to Port A forces the pistons outwards, causing the pinion to turn counterclockwise while the air is being exhausted from Port B.
Air to Port B forces the pistons inwards, causing the pinion to turn clockwise while the air is being exhausted from Port A.

A口进气, 压缩空气推动活塞向外运动, 使执行器输出轴顺时针旋转(0°→90°), B口排气。
B口进气, 压缩空气推动活塞向内运动, 使执行器输出轴逆时针旋转(90°→0°), A口排气。

Air to Port A forces the pistons outwards, causing the pinion to turn clockwise while the air is being exhausted from Port B.
Air to Port B forces the pistons inwards, causing the pinion to turn counterclockwise while the air is being exhausted from Port A.

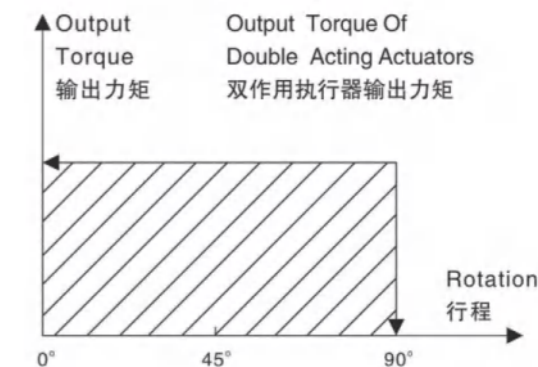
双作用执行器输出力矩(Unit:N.m)

Output Torque Of Double Acting Actuators

Model 型号	Air supply pressure(Unit:Bar) 输入气源压力(单位:巴)									
	2	2.5	3	4	4.5	5	5.5	6	7	8
AT52DA	8.0	10.0	12.0	16.0	18.0	20.0	21.9	23.9	27.9	31.9
AT65DA	14.6	18.2	21.9	29.2	32.8	36.5	40.1	43.8	51.1	58.4
AT75DA	20.1	25.1	30.1	40.1	45.1	50.2	55.2	60.2	70.2	80.3
AT85DA	31.4	39.2	47.0	62.7	70.5	78.4	86.2	94.1	109.7	125.4
AT92DA	45.1	56.4	67.7	90.3	101.6	112.9	124.1	135.4	158.0	180.6
AT105DA	66.1	82.7	99.2	132.2	148.8	165.3	181.8	198.4	231.4	264.5
AT125DA	100.3	125.4	150.5	200.6	225.7	250.8	275.9	301.0	351.1	401.3
AT140DA	171.0	213.8	256.5	342.0	384.8	427.5	470.3	513.0	598.5	684.0
AT160DA	266.0	332.5	399.0	532.0	598.5	665.0	731.5	798.0	931.0	1064.0
AT190DA	425.6	532.0	638.4	851.2	957.6	1064.0	1170.4	1276.8	1489.6	1702.4
AT210DA	532.0	665.0	798.0	1064.0	1197.0	1330.0	1463.0	1596.0	1862.0	2128.0
AT240DA	769.5	961.9	1154.3	1539.0	1731.4	1923.8	2116.1	2308.5	2693.3	3078.0
AT270DA	1169.6	1462.1	1754.5	2339.3	2631.7	2924.1	3216.5	3508.9	4093.7	4678.6

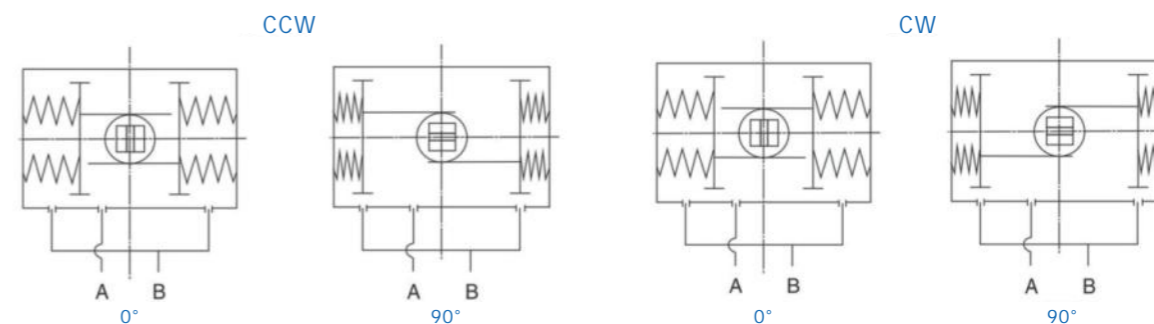
双作用执行器的选型:
在正常操作条件下, 双作用执行器考虑的安全系数为20%-30%。
示例:
阀门力矩=100N.m
安全力矩=100x(1+30%)=130N.m
气源压力=5Bar
对照双作用力矩表, 选配双作用执行器最小规格为AT160DA。

Selection of Double Acting Actuator:
The suggested safety factor for double acting actuators under normal working conditions is 20%-30%
Example:
The torque needed by valve=100N.m
The torque considered safety factor(1+30%)=130N.m
Air Supply=5Bar
According to the above table, we can choose the minimum model is AT160DA.



双作用执行器

Double Acting Actuators



A口进气, 压缩空气克服弹簧力, 推动活塞向外运动, 执行器输出轴逆时针转动(0°→90°), B口排气;
执行器失气, 活塞在弹簧力的作用下向内运动, 执行器输出轴顺时针转动(90°→0°), A口排气。

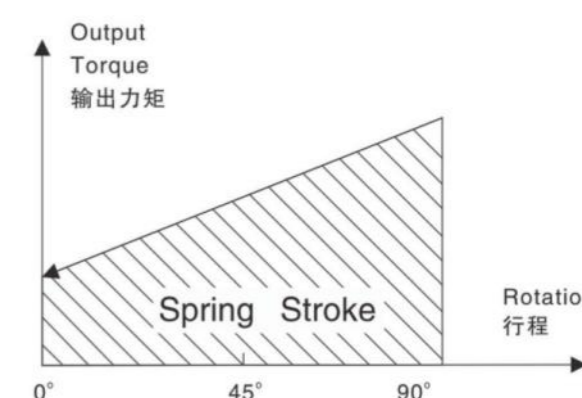
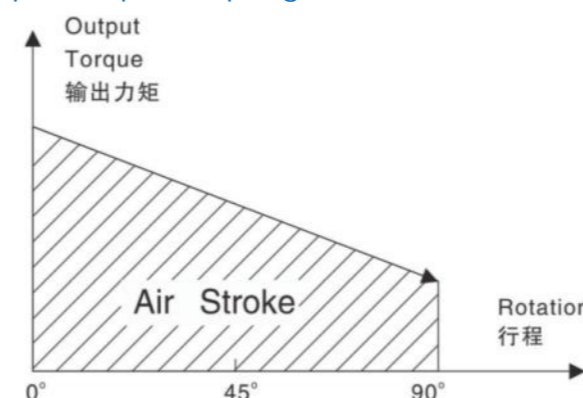
Air to port A forces the pistons outwards, causing the springs to compress, The pinion turns counter clockwise while air is being exhausted from port B.
Loss of air pressure on port A, the stored energy in the springs forces the pistons inwards. The pinion turns clockwise while air is being exhausted from port A.

A口进气, 压缩空气克服弹簧力, 推动活塞向外运动, 执行器输出轴逆时针转动(0°→90°), B口排气;
执行器失气, 活塞在弹簧力的作用下向内运动, 执行器输出轴逆时针转动(90°→0°), A口排气。

Air to port B forces the pistons outwards, causing the springs to compress, The pinion turns counter clockwise while air is being exhausted from port B.
Loss of air pressure on port A, the stored energy in the springs forces the pistons inwards. The pinion turns clockwise while air is being exhausted from port A.

单作用执行器输出力矩

Output Torque Of Spring Return Actuators



Output Torque of Spring Return Actuators 单作用执行器输出力矩(Unit: N.m)

Output torque of air to springs 气源克服弹簧输出力矩																		Springs' output 弹簧输出力矩		
Air pressure 气源压力	2.5Bar		3Bar		4Bar		5Bar		6Bar		7Bar		8Bar							
	0°	90°	0°	90°	0°	90°	0°	90°	0°	90°	0°	90°	0°	90°	0°	90°	0°	90°		
Model 型号	Spring Qty 弹簧数量	Start 开始	End 结束	Start 开始	End 结束	Start 开始	End 结束	Start 开始	End 结束	Start 开始	End 结束	Start 开始	End 结束	Start 开始	End 结束	Start 开始	End 结束	Start 开始	End 结束	
AT52SR	5	5.7	3.8	7.6	5.7													6.2	4.3	
	6	4.9	2.5	6.9	4.5	10.9	8.5											7.4	5.0	
	7	4.0	1.3	6.0	3.3	9.8	7.3	14.0	10.4									8.6	5.9	
	8			5.2	2.0	9.2	6.0	13.2	9.1	17.2	14.1							9.9	6.7	
	9			4.3	0.8	8.3	4.8	12.3	7.9	16.3	12.8	20.3	16.8					11.1	7.6	
	10					7.4	3.6	11.5	6.7	15.5	11.6	19.5	15.6					12.4	8.5	
	11					6.6	2.3	10.6	5.4	14.6	10.4	18.6	14.3	22.6	18.3			13.6	9.3	
	12							9.7	4.2	13.8	9.1	17.8	12.2	21.8	17.1			14.8	10.2	
	AT65SR	5	11.4	7.7	15.0	11.4	22.3	14.9											10.4	6.8
		6	10.1	5.7	13.6	9.3	20.9	16.6	28.3	23.9									12.5	8.2
		7	8.6	3.6	12.5	7.2	19.5	14.5	26.8	21.9									14.6	9.6
		8			10.9	5.1	18.2	12.4	25.5	19.8	32.8	27.0	40.1	34.3					16.7	10.9
9						16.8	10.4	24.1	17.7	31.4	24.9	38.7	32.2					18.8	12.3	
10						1.4	8.2	22.8	15.6	30.0	22.8	37.3	30.1	44.7	37.4			20.9	13.7	
11								21.5	13.5	28.7	20.7	36.0	28.0	43.3	35.3			22.9	15.0	
12								20.0	11.4	27.3	18.6	34.6	25.9	41.9	33.3			25.0	16.4	
AT75SR		5	14.5	10.6	19.4	15.5	29.5	25.7											14.5	10.5
		6	12.4	7.6	17.3	12.6	27.4	22.7	37.5	32.8									17.4	12.7
		7	10.4	4.8	15.2	9.7	25.3	19.9	35.4	29.9									20.3	14.8
		8			13.1	6.8	23.1	16.9	33.3	27.0	43.2	37.0	53.3	47.0					23.2	16.9
	9					21.0	14.1	31.2	24.1	41.1	34.1	51.2	44.2					26.1	19.0	
	10					19.0	11.1	28.8	21.2	39.0	31.2	49.1	41.2	59.1	51.2			29.0	21.1	
	11							27.0	18.3	37.0	28.3	47.0	38.4	57.0	48.4			31.9	23.2	
	12							24.9	15.4	34.9	25.4	44.9	35.4	54.9	45.4			34.7	25.3	
	AT85SR	5	23.3	16.1	31.1	24.0	46.8	39.7											23.0	15.8
		6	20.1	11.5	28.0	19.3	43.7	35.1	59.4	50.7									27.6	19.0
		7	17.0	6.9	24.8	14.8	40.5	30.5	56.2	46.2									32.2	22.1
		8			21.7	10.1	37.4	25.8	53.1	41.5	68.8	57.2	84.5	72.9					36.8	25.3
9						34.2	21.3	49.9	37.0	65.6	52.6	81.2	68.3					41.4	28.5	
10						31.0	16.6	46.7	32.3	62.4	48.0	78.1	63.7	93.8	79.3			46.0	31.6	
11								43.6	27.7	59.3	43.4	75.0	59.1	90.6	74.8			50.6	34.8	
12								40.4	23.2	56.1	38.9	71.7	54.5	87.4	70.2			55.2	38.0	
AT92SR		5	33.1	22.0	44.2	33.2	66.8	55.9											34.4	23.3
		6	28.4	15.2	39.6	26.4	62.2	49.0	84.8	71.6									41.2	28.0
		7	23.8	8.2	34.9	19.4	57.5	42.1	80.2	64.7									48.1	32.7
		8			31.3	12.6	52.9	35.2	75.5	57.9	98.1	80.5	120.7	103.0					55.0	37.3
	9					48.2	28.4	70.9	51.0	93.5	73.6	116.0	96.1					61.9	42.0	
	10					43.6	21.5	66.2	44.1	88.8	66.7	111.3	89.2	134.0	111.8			68.7	46.7	
	11							61.5	37.2	84.1	59.9	106.6	82.4	129.2	105.0			75.6	51.4	
	12							56.8	30.4	79.4	53.0	101.9	75.5	124.5	98.1			82.5	56.0	
	AT105SR	5	51.0	33.4	67.5	49.9	100.6	83.0											49.2	31.6
		6	44.7	23.5	61.1	40.0	94.2	73.2	127.3	106.2									59.1	38.0
		7	38.4	13.7	54.9	30.3	87.9	63.4	121.0	96.4									68.9	44.3
		8			48.5	20.4	81.6	53.5	114.7	86.5	147.7	119.6	180.8	152.7					78.7	50.6
9						75.3	43.7	108.4	76.8	141.5	109.8	174.5	142.9					88.6	56.9	
10						68.9	33.4	102.0	66.5	135.1	99.6	168.2	132.6	201.2	165.7			98.4	63.3	
11								95.7	57.0	128.7	90.1	161.8	123.1	194.8	156.2			108.3	69.6	
12								89.4	47.5	122.5	80.6	155.5	113.6	188.6	146.7			118.1	75.9	

Output Torque of Spring Return Actuators 单作用执行器输出力矩(Unit: N.m)

Output torque of air to springs 气源克服弹簧输出力矩																		Springs' output 弹簧输出力矩		
Air pressure 气源压力	2.5Bar		3Bar		4Bar		5Bar		6Bar		7Bar		8Bar							
	0°	90°	0°	90°	0°	90°	0°	90°	0°	90°	0°	90°	0°	90°	0°	90°	0°	90°		
Model 型号	Spring Qty 弹簧数量	Start 开始	End 结束	Start 开始	End 结束	Start 开始	End 结束	Start 开始	End 结束	Start 开始	End 结束	Start 开始	End 结束	Start 开始	End 结束	Start 开始	End 结束	Start 开始	End 结束	
AT125SR	5	73	47	98	72	148	122											79	52	
	6	63	31	88	56	138	107	188	157									94	63	
	7	52	15	77	40	127	90	178	141									110	73	
	8			67	25	117	75	167	125	217	176	268	226					125	84	
	9					107	59	157	109	207	159	257	210					141	94	
	10					96	44	146	94	196	144	247	194	297	245			157	105	
	11							136	78	186	128	236	178	286	228			173	115	
	12							125	63	176	113	226	163	276	213			188	125	
	AT140SR	5	128	85	171	127	256	213											129	86
		6	111	59	154	102	239	187	325	273									155	103
		7	94	33	137	76	222	162	308	247									181	120
		8			120	50	205	136	291	221	376	307	462	392					206	137
9						187	110	273	196	358	281	444	367					232	155	
10						170	84	256	169	341	255	427	340	512	426			258	172	
11								238	143	324	229	409	314	495	400			284	189	
12								221	118	307	203	392	289	478	374			310	206	
AT160SR		5	193	124	259	191	392	324											208	140
		6	165	83	232	149	365	282	498	415									250	168
		7	137	41	203	107	336	240	469	373									292	196
		8			176	66	309	199	442	237	575	465	708	598					333	223
	9					280	157	413	290	546	423	679	556					375	251	
	10					253	115	386	248	519	381	652	514	785	647			417	279	
	11							358	207	491	340	624	473	757	606			458	307	
	12							330	165	463	298	596	431	729	564			500	335	
	AT190SR	5	332	222	438	329	651	542											309	200
		6	292	161	398	267	611	480	824	693									371	240
		7	252	99	358	205	571	418	784	631									433	280
		8			318	143	531	356	744	569	957	782	1169	995					495	320
9						491	295	704	507	917	720	1130	933					557	360	
10						451	233	664	446	877	658	1090	871	1302	1084			618	400	
11								624	384	837	597	1050	809	1263	1022			680	440	
12								584	322	797	535	1010	748	1223	960			742	480	
AT210SR		5	390	285	523	418	789	684											380	275
		6	335	209	468	342	734	608	1000	874									456	330
		7	280	133	413	266	679	532	945	798									532	385
		8			358	190	624	456	890	722	1156	988	1422	1254					608	440
	9				</															

单作用执行器的选择

在正常工作条件下，单作用执行器考虑的安全系数为30%-50%

例如：

阀门需要力矩=80N.m
安全力矩=80(1+30%)=104N.m
气源压力=5Bar
对照单作用执行器输出力矩表，
我们可以查到AT140SRK7输出力矩为：
空气行程0°=308N.m
空气行程90°=247N.m
弹簧行程90°=181N.m
弹簧行程0°=120N.m
所有输出力矩均大于我们需求。

注意：

单作用执行器弹簧复位过程中，执行器B口通气不影响执行器输出力矩，相反帮助弹簧的复位。

Selection of Single Acting Actuator

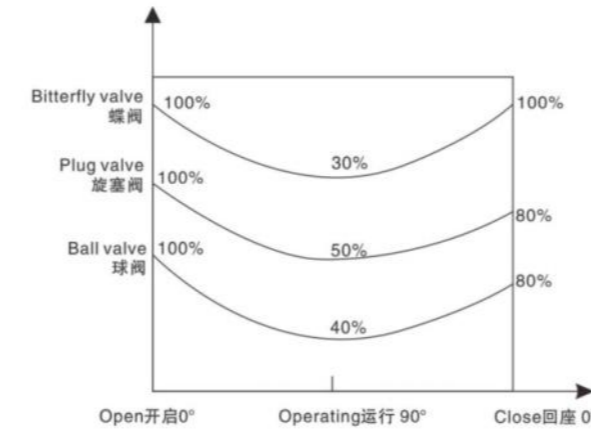
The suggested safety factor for spring return actuator under normal working conditions is 30%-50%

Example:

The torque needed by valve=80N.m
The torque consider safety factor=80(1+30%)=104N.m
Air Supply=5Bar
According to the table of spring return actuators' output,we find output torque of AT140SRK7 is:
Air stroke 0°=308N.m
Air stroke 90°=247N.m
Spring stroke 90°=181N.m
Spring stroke 0°=120N.m
All the output torque is larger than we needed

Attention:

During the spring reset of the single acting actuator, the actuator B port ventilation does not affect the actuator output torque, instead, it helps the spring reset.

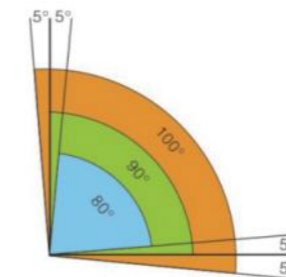


Example:

The max torque needed by the butterfly valve=104N.m
The torque after opened (operating)104x30%=32N.m
Air Supply=5Bar
We can select the AT125SR K11 output torque is:
Air stroke 0°=136N.m >104N.m
Air stroke 90°=78N.m >32N.m
Spring stroke 90°=173N.m >32N.m
Spring stroke 0°=115N.m >104N.m
The above datas show the actuator's torque can satisfy the requirement of the butterfly valve.

工作技术条件

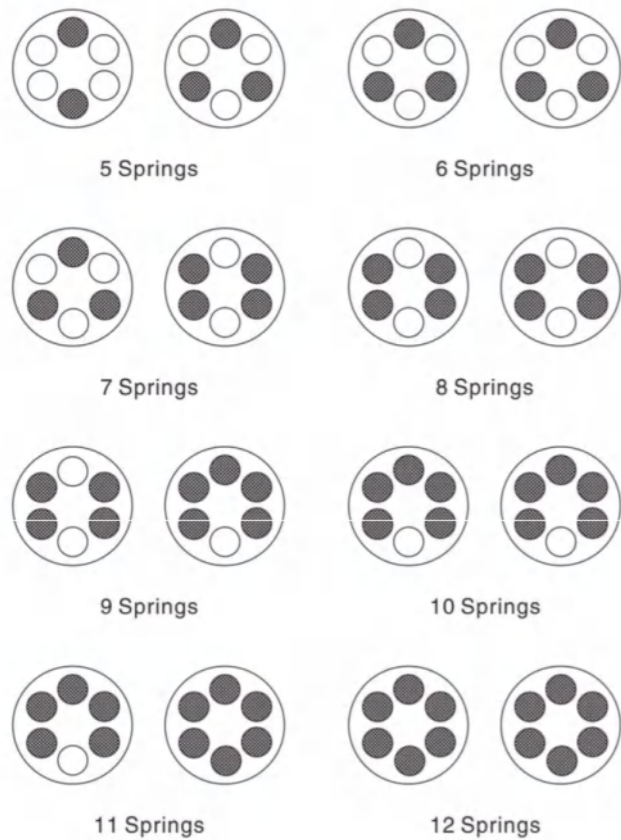
- 1、工作介质
干燥或润滑的空气或无腐蚀性气体介质中杂质微粒小于30μm。
- 2、气源压力
最小气源压力2.5巴，最大气源压力8巴。
- 3、介质环境温度
标准:-20°C~+80°C
低温:-35°C~+80°C
高温:-15°C~+150°C
- 4、行程调节
0°和90°两个位置有±5°的调节范围。
- 5、使用场合室内或室外安装。



Operating Conditions

- 1、Operating media
Dry or lubricated air, or the non-corrosive gases the maximum particle diameter must less than 30μm.
- 2、Air supply pressure the minimum supply pressure is 2.5 Bar, the maximum supply pressure is 8 Bar.
- 3、Operating temperature
Standard:-20°C~+80°C
Low temperature:-35°C~+80°C
High temperature:-15°C~+150°C
- 4、Travel adjustment
Have adjustment range of ± 5° for the rotation at 0° and 90°
- 5、Application
Either indoor or outdoor.

单作用执行器弹簧安装形式 Single Acting Actuator Spring Installation



在单作用执行器的选配过程中，如果能够了解阀门在开启、运行和关闭时的扭矩分配，我们就可以更加经济、更加合理地选配执行器。

During selecting the spring return actuators, we can choose the more reasonable and more economical actuators, if we know the different torque needed by the valve working at opening, operating and closing.

例如：

蝶阀原最大扭矩=104N.m
打开后扭矩104x30%=32N.m
气源压力=5Bar
我们可以选择AT125SR K11
空气行程0°=136N.m>104N.m
空气行程90°=78N.m>32N.m
弹簧行程90°=173N.m>32N.m
弹簧行程0°=115N.m>104N.m
以上数据显示可以满足该蝶阀的正常启闭。

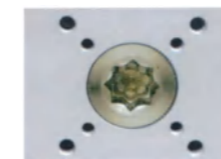
单作用执行器弹簧安装形式 Single Acting Actuator Spring Installation



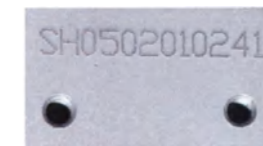
气源接口符合 NAMUR 标准，可简单方便地安装电磁阀。
Air supply connection is designed in accordance with NAMUR Standard to install solenoid valves.



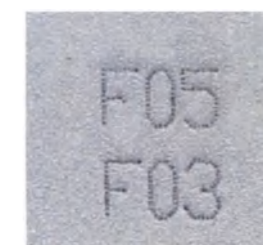
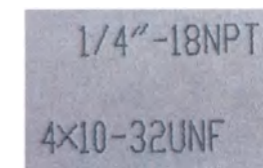
输出轴的 NAMUR 标准槽和缸体上部标准安装孔，可使限位开关、定位器直接啮合和安装。
The Namur drive pinion and the Namur top mounting connection permit direct installation of accessories such as limit switch box and positioner.

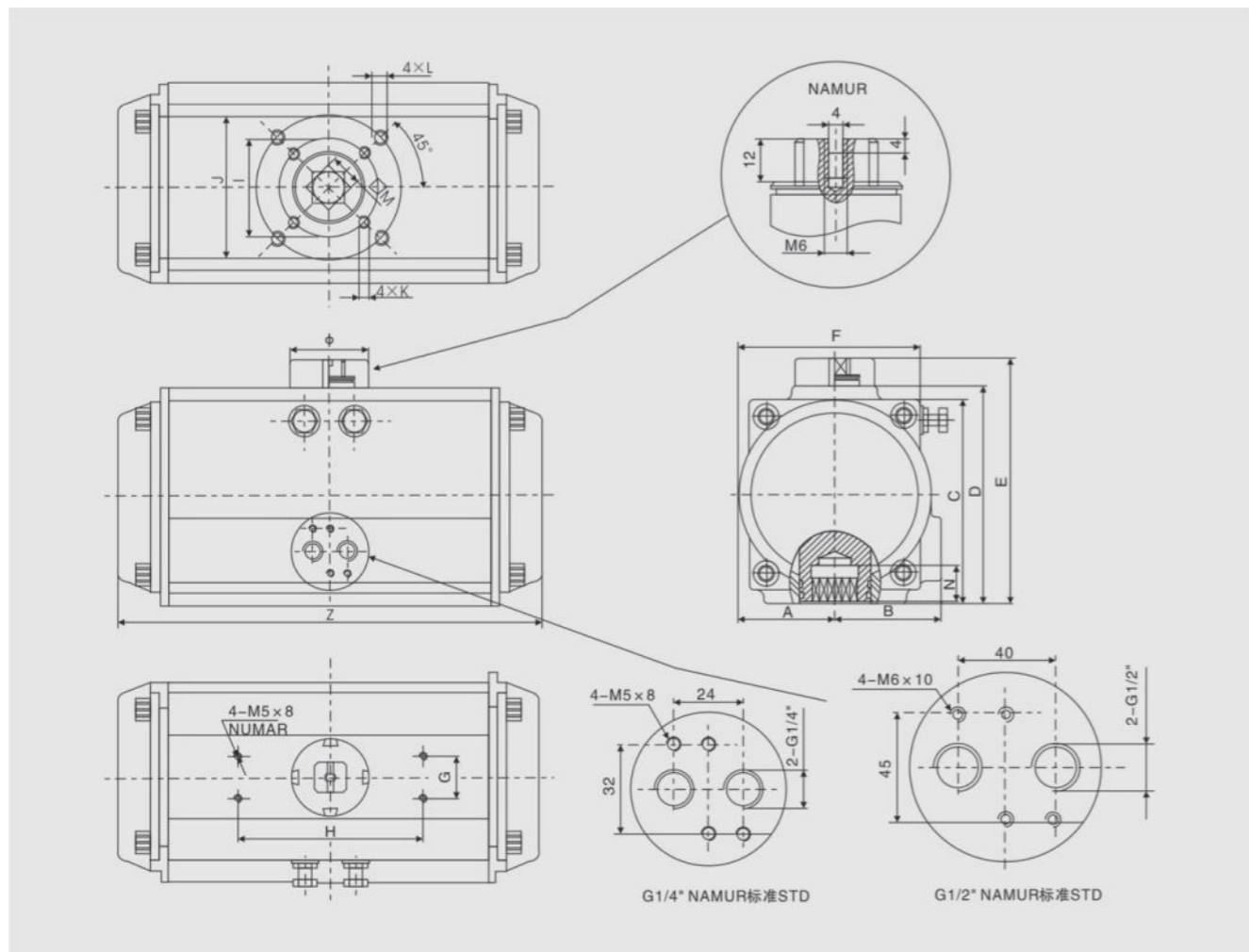


底部安装孔设计符合 ISO5211 和 DIN3337 标准，可以直接安装离合器（气动手轮机构）或安装支架。
Bottom mounting connection is designed in accordance with ISO5211 and DIN3337 standards for direct mounting with valve gear boxes or mounting brackets.



产品序列号、气源接口及底部安装孔全部电脑打字，易于辨识和跟踪服务。
Each actuator is marked with a serial-number, air connection and bottom mounting holes are marked for easy track and distinction.





尺寸表 Dimension Table

型号 Model	A	B	C	D	E	F	G	H	I	J	K	L	M	N	Z	Φ	气源接口 Air connection
AT52	30	41.5	65.5	72	92	65	30	80	φ36	φ50	4-M5×8	4-M6×10	11	14	147	φ40	NAMUR G1/4"
AT65	37.5	46	81	89	109	73.5	30	80	φ50	φ70	4-M6×10	4-M8×13	14	18	170	φ40	NAMUR G1/4"
AT75	42	53	94	100	120	81	30	80	φ50	φ70	4-M6×10	4-M8×13	14	18	184	φ40	NAMUR G1/4"
AT85	46	57	98.5	108.5	128.5	92	30	80	φ50	φ70	4-M6×10	4-M8×13	17	21	206	φ40	NAMUR G1/4"
AT92	50	58.5	111	116.5	136.5	98	30	80	φ50	φ70	4-M6×10	4-M8×13	17	21	262	φ40	NAMUR G1/4"
AT105	57.5	64	122.5	134	154	109.5	30	80	φ70	φ102	4-M8×13	4-M10×16	22	26	282	φ40	NAMUR G1/4"
AT125	71	74.5	150	160	180	133.5	30	80	φ70	φ102	4-M8×13	4-M10×16	22	26	304	φ55	NAMUR G1/4"
AT140	75	77	162	174	194	137.5	30	80	φ102	φ125	4-M10×16	4-M12×20	27	31	396	φ55	NAMUR G1/4"
AT160	87	87	185	198.5	218.5	158.5	30	80	φ102	φ125	4-M10×16	4-M12×20	27	31	445	φ55	NAMUR G1/4"
AT190	103	103	216	232	262	189	30	130		φ140		4-M16×25	36	50	532	φ80	NAMUR G1/4"
AT210	113	113	235.5	257	287	210	30	130		φ140		4-M16×25	36	50	536	φ80	NAMUR G1/4"
AT240	130	130	264.5	292	322	245	30	130		φ165		4-M20×25	46	60	602	φ80	NAMUR G1/4"
AT270	147	147	299	332	362	273	30	130		φ165		4-M20×25	46	60	722	φ80	NAMUR G1/2"

耗气量 Air Consumption

开向体积和关向体积 Air volume opening & closing

单位Unit:L

Model 型号	Air volume opening 开向体积(升)	Air volume closing 关向体积(升)	Model 型号	Air volume opening 开向体积(升)	Air volume closing 关向体积(升)
AT52	0.12	0.16	AT140	2.5	2.2
AT65	0.21	0.23	AT160	3.7	3.2
AT75	0.3	0.34	AT190	5.9	5.4
AT85	0.43	0.47	AT210	7.5	7.5
AT92	0.64	0.73	AT240	11	9
AT105	0.95	0.88	AT270	17	14
AT125	1.6	1.4			

Air consumption rest with Air Supply. Air volume and Action cycle times, expressions:

L/Min=Air volume(Air volume Opening+Air volume closing)

$$\times \left[\frac{\text{Air Supply(Kpa)}+101.3}{101.3} \right] \times \text{Action cycle times(/min)}$$

耗气量取决于供气压力、开关行程、体积及动作次数，计算如下：

升/分=气缸体积(开向体积+关向体积)

$$\times \left[\frac{\text{供气压力(Kpa)}+101.3}{101.3} \right] \times \text{次数/分钟}$$

Series 系列	Model 型号	Spring Q.ty 弹簧数量	Options 选项
AT □ DA	52	K5	120°,140°,180° for special degree operation
	65	K6	
	75	K7	
AT □ SR □	85	K8	SS Stainless Steel Pinion
	92	K9	
AT □ □ Ni	105	K10	SS Stainless Steel Pinion
	125	K11	
		K12	

Series 系列	Model 型号	Spring Q.ty 弹簧数量	Options 选项
AT □ DA	140	K5	120°,140°,180° for special degree operation
	160	K6	
	190	K7	
AT □ SR □	210	K8	SS Stainless Steel Pinion
	240	K9	
AT □ □ Ni	270	K10	SS Stainless Steel Pinion
		K11	
		K12	

重量表 Weight Table

Model 型号	AT52Φ(52)	AT65Φ(65)	AT75Φ(75)	AT85Φ(85)	AT92Φ(92)	AT105Φ(105)	AT125Φ(125)
重量(DA)	1.38kg	2.03kg	2.7kg	3.13kg	4.6kg	6.77kg	8.9kg
重量(SR)	1.45kg	2.05kg	2.9kg	3.6kg	5.22kg	6.85kg	10.11kg

Model 型号	AT140Φ(140)	AT160Φ(160)	AT190Φ(190)	AT210Φ(210)	AT240Φ(240)	AT270Φ(270)
重量(DA)	13.25kg	20.14kg	31.3kg	46.80kg	67.28kg	96.9kg
重量(SR)	15.55kg	24kg	35.25kg	54.8kg	80.2kg	118kg

注:1、SR为12根弹簧;2、重量为净重量。 Note:1、SR is 12 springs; 2、Weight is net weight.

气动球阀
Pneumatic Ball Valves



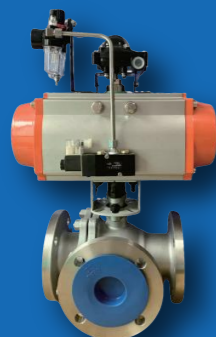
气动三片式螺纹球阀

VE11-3PCS VINCER Pneumatic 3-Piece Ball Valve



气动法兰球阀

VP11-F VINCER Pneumatic Flanged Ball Valve



气动三通法兰球阀

VP11-F3 VINCER Pneumatic 3-Way Flanged Ball Valve



气动四通法兰球阀

VP11-F4 VINCER Pneumatic 4-Way Flanged Ball Valve



气动塑料球阀

VP11-P VINCER Pneumatic Plastic Ball Valve



气动卡箍二通球阀

VP11-K VINCER Pneumatic Sanitary Clamp Ball Valve

伟赛尔气动球阀
PNEUMATIC BALL VALVES

气动三片式螺纹球阀

VE11-3PCS VINCER PNEUMATIC 3-PIECE BALL VALVE

气动三片式球阀采用先进的气动控制技术和易于维护的球阀结构，帮助你可靠地控制流体的流动。

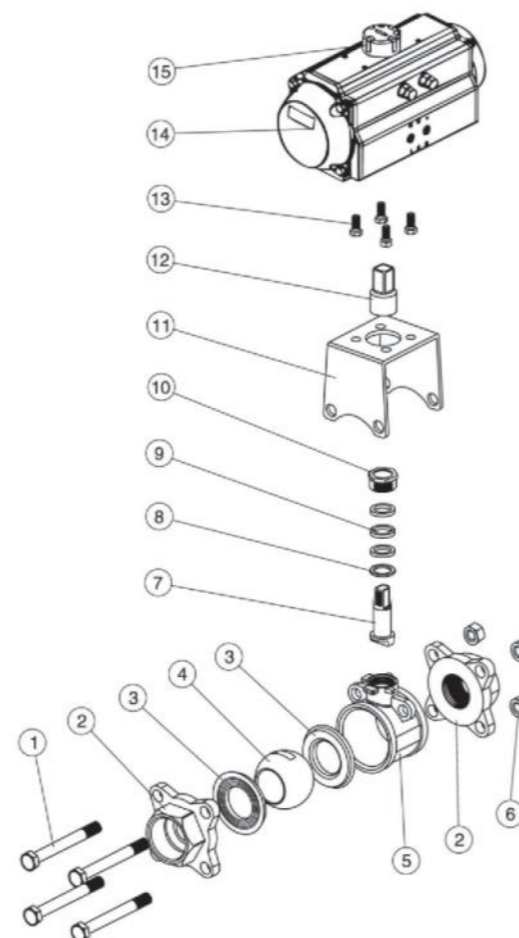
Pneumatic three-piece ball valve adopts advanced pneumatic control technology and easy-to-maintain ball valve structure to help you control the flow of fluid reliably.

技术规范 Technical Parameter

- 设计标准 Design Standard: GB/T 12237
- 试验和检验 Test & Inspection: GB/T 26480

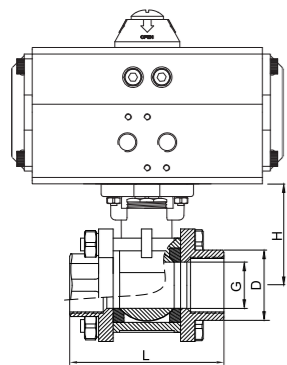
优势 Advantage

高密封性，方便维护，耐腐蚀
High sealing, Easy maintenance, Corrosion resistance

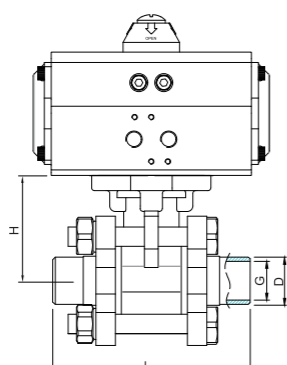


主要零件材质表 Main Parts Materials

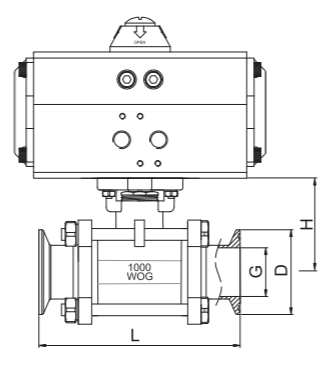
序号 No.	零件名称 Component	材质 Material
1	螺栓 Screw	不锈钢304 Stainless Steel 304
2	接头 Connector	不锈钢CF8、CF8M、CF3、CF3M Stainless Steel CF8、CF8M、CF3、CF3M
3	阀座 Seat	PTFE、对位聚苯(PPL) 硬质合金(H/Y)
4	球体 Ball	不锈钢304、304L、316、316L Stainless Steel 304、304L、316、316L
5	阀体 Body	不锈钢CF8、CF8M、CF3、CF3M Stainless Steel CF8、CF8M、CF3、CF3M
6	螺母 Nut	不锈钢304 Stainless Steel 304
7	阀杆 Stem	不锈钢304、304L、316、316L Stainless Steel 304、304L、316、316L
8	垫片 Gasket	不锈钢304、316L Stainless Steel 304、316L
9	填料 Packing	PTFE
10	压盖 Gland	不锈钢304、316L Stainless Steel 304、316L
11	连接支架 Connecting Yoke	不锈钢CF8 Stainless Steel CF8
12	连接套 Connecting Set	不锈钢304 Stainless Steel 304
13	螺栓 Screw	不锈钢304 Stainless Steel 304
14	气动执行器 Pneumatic Actuator	AT Series
15	位置指示器 Location Indicator	塑料 Plastic



螺纹型 Threaded Type



对焊型 Butt-welded
承插焊 Socket-welded



卡箍型 Clamped Type

螺纹型链接尺寸 Dimension of Threaded Type

SIZE	DN08	DN10	DN15	DN20	DN25	DN32	DN40	DN50	DN65	DN80	DN100
Actuator	AT52	AT52	AT52	AT52	AT52	AT65	AT65	AT75	AT83	AT92	AT92
G	1/4"	3/8"	1/2"	3/4"	1"	1-1/4"	1-1/2"	2"	2-1/2"	3"	4"
D	11.2	12.5	15	20	25	32	40	50	65	80	100
L	60	60	72	82	90	112	120	145	185	210	268
H	42	42	42	48.5	58.5	63	71	78	100	109	140

对焊型链接尺寸 Dimension of Butt-Welded Type

SIZE	DN08	DN10	DN15	DN20	DN25	DN32	DN40	DN50	DN65	DN80	DN100
Actuator	AT52	AT52	AT52	AT52	AT52	AT65	AT65	AT75	AT83	AT92	AT92
G	1/4"	3/8"	1/2"	3/4"	1"	1-1/4"	1-1/2"	2"	2-1/2"	3"	4"
D	12.5	17.5	22	27	34	42.5	48.5	61	73	90	115
L	65	65	75	83	90	113	115	140	160	180	215
H	33	34	38	45	55	60	70	85	100	112	140

卡箍型链接尺寸 Dimension of Clamped Type

SIZE	DN15	DN20	DN25	DN32	DN40	DN50	DN65	DN80	DN100
Actuator	AT52	AT52	AT52	AT52	AT65	AT75	AT83	AT92	AT92
G	1/2"	3/4"	1"	1-1/4"	1-1/2"	2"	2-1/2"	3"	4"
D	34/50.5	34/50.5	50.5	50.5	50.5	64	77/91	91/106	119
L	100	100	120	130	140	156	196	228	242
H	55	60	70	82	90	105	120	132	158

气动法兰球阀

VP11-F VINCER PNEUMATIC FLANGED BALL VALVE

气动两通法兰球阀具有结构简单、操作方便、耐腐蚀等特点，为你提供可靠的流体控制解决方案。

Pneumatic two-way flange ball valve has the characteristics of simple structure, convenient operation and corrosion resistance, providing you with reliable fluid control solutions.

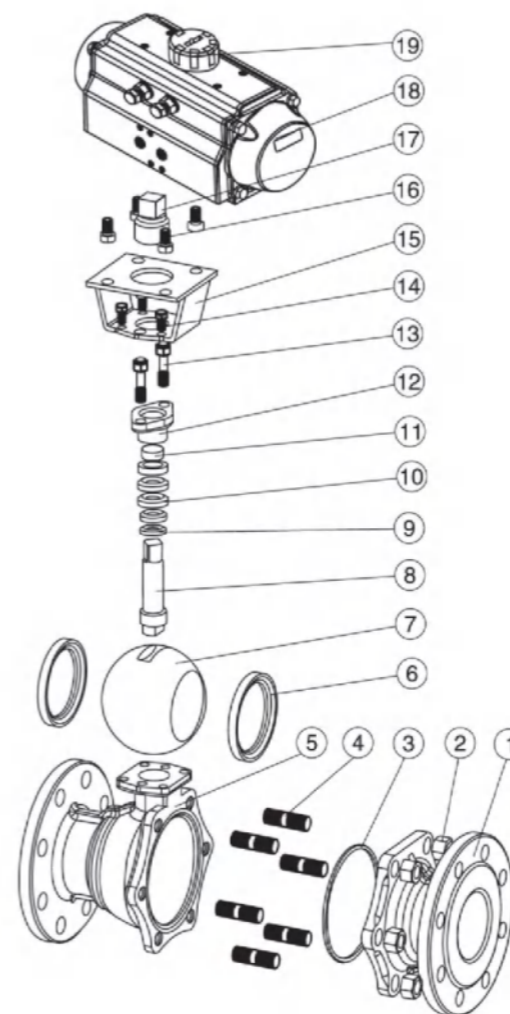
技术规范 Technical Parameter

- 设计标准 Design Standard: GB/T 12237、API 608、API 6D
- 结构长度 Face To Face Dimension: GB/T 12221、ASME B16.10、API 6D
- 连接法兰尺寸 Connecting Flange Size: GB/T 9113、HG20592、JB/T 79、GB/T 12224、ASME B16.5、ASME B16.47、ASME B16.11、ASME B16.25
- 试验和检验 Test & Inspection: JB/T 9092、GB/T 26480、API598、API 6D

优势 Advantage

高气密性，耐高压，安装方便

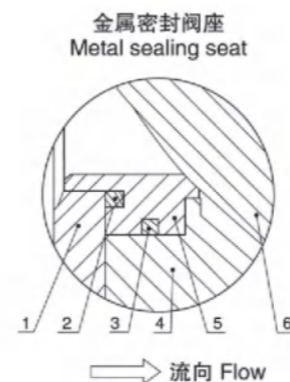
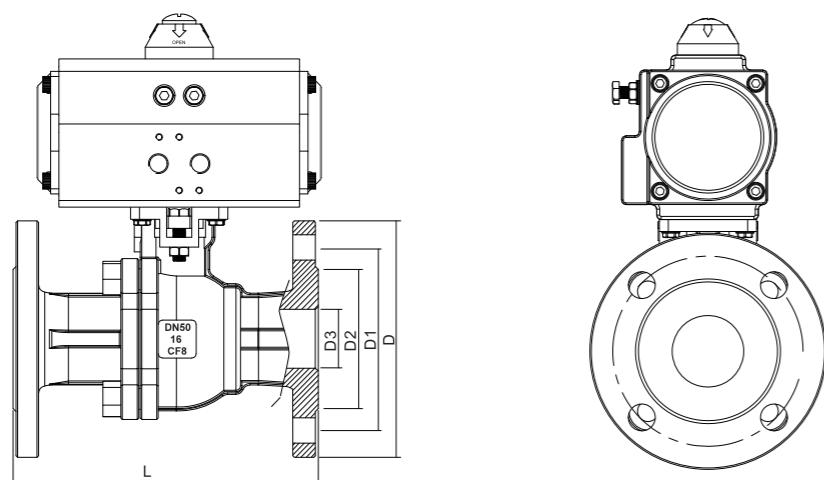
High sealing performance, High pressure resistance, Easy installation



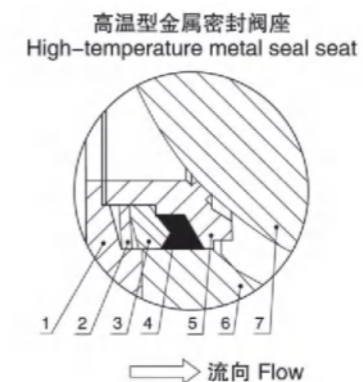
主要零件材质表 Main Parts Materials

序号 No.	零件名称 Component	材质 Material		
		C	P	R
1	右阀体 Right valve	A216-WCB	A351-CF8	A351-CF8M
2	螺母 Nut	A194-2H	A276-304	A276-316
3	垫片 Gasket	PTFE、石墨金属复合垫 Graphite Metal Composite Pad		
4	螺栓 Screw	A193-B7	A276-304	A276-316
5	阀体 Body	A216-WCB	A351-CF8	A351-CF8M
6	阀座 Seat	PTFE、对位聚苯(PPL) 硬质合金 Hard Alloy		
7	球体 Ball	A182-F304	A182-F304	A182-F316
8	阀杆 Stem	A276-410	A276-410	A276-316
9	垫片 Gasket	A276-304	A276-304	A276-316
10	填料 Packing	PTFE、柔石墨 Flexible Graphite		
11	衬套 Bushing	PTFE复合轴承 Composite Bearings		
12	压盖 Gland	A216-WCB	A351-CF8	A351-CF8M
13	螺栓 Screw	A194-2H	A276-304	A276-304
14	连接支架 Connecting Yoke	A351-CF8	A351-CF8	A351-CF8
15	连接套 Connecting Set	A351-CF8	A351-CF8	A351-CF8
16	气动装置 Pneumatic Device	AT系列、AW系列 AT Series、AW Series		
17	位置指示器 Location Indicator	塑料 Plastic		

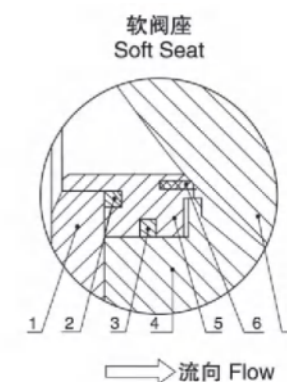
WWW.VINCERVALVE.COM



金属密封阀座
Metal sealing seat
温度范围 -20~160°C/230°C
Temperature Range



高温型金属密封阀座
High-temperature metal seal seat
温度范围 -20~425°C
Temperature Range



软阀座
Soft Seat
温度范围 -20~160°C
Temperature Range

主要外形及连接法兰尺寸GB-PN16 Main Outline and Connecting Flange Size-PN16

MEDLE	DN15	DN20	DN25	DN32	DN40	DN50	DN65	DN80	DN100	DN125	DN150	DN200
G	1/2"	3/4"	1"	1-1/4"	1-1/2"	2"	2-1/2"	3"	4"	5"	6"	8"
D3	15	20	25	30	40	50	65	80	100	125	150	200
D2	45	55	65	78	85	100	120	135	155	185	210	265
D1	65	75	85	100	110	125	145	160	180	210	240	295
D	95	105	115	135	145	160	180	195	215	245	280	335
L	130	140	150	165	180	200	222	250	280	320	360	400
n-φd	4-φ14	4-φ14	4-φ14	4-φ18	4-φ18	4-φ18	4-φ18	8-φ18	8-φ18	8-φ18	8-φ23	12-φ23

主要外形及连接法兰尺寸GB-PN40 Main Outline and Connecting Flange Size-PN40

MEDLE	DN15	DN20	DN25	DN32	DN40	DN50	DN65	DN80	DN100	DN125	DN150	DN200
G	1/2"	3/4"	1"	1-1/4"	1-1/2"	2"	2-1/2"	3"	4"	5"	6"	8"
D3	15	20	25	30	40	50	65	80	100	125	150	200
D2	45	55	65	78	85	100	120	135	160	188	218	282
D1	65	75	85	100	110	125	145	160	190	220	250	320
D	95	105	115	135	145	160	180	195	230	270	300	375
L	140	152	165	178	190	216	241	283	305	381	403	419
n-φd	4-φ14	4-φ14	4-φ14	4-φ18	4-φ18	4-φ18	8-φ18	8-φ18	8-φ23	8-φ25	8-φ25	12-φ30

主要外形及连接法兰尺寸GB-PN25 Main Outline and Connecting Flange Size-PN25

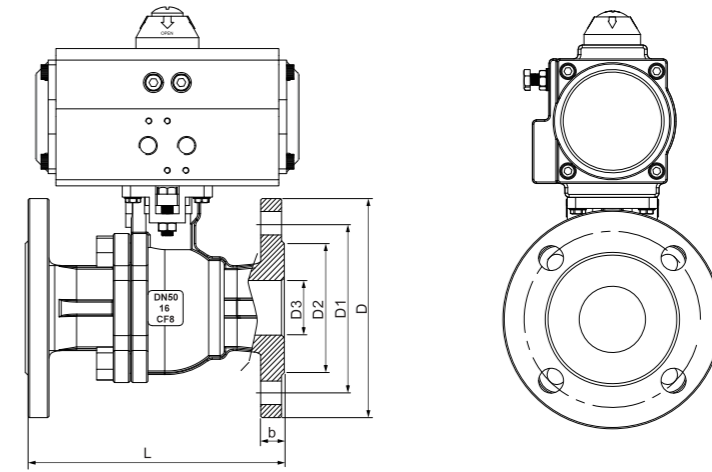
MEDLE	DN15	DN20	DN25	DN32	DN40	DN50	DN65	DN80	DN100	DN125	DN150	DN200
G	1/2"	3/4"	1"	1-1/4"	1-1/2"	2"	2-1/2"	3"	4"	5"	6"	8"
D3	15	20	25	30	40	50	65	80	100	125	150	200
D2	45	55	65	78	85	100	120	135	160	190	220	250
D1	65	75	85	100	110	125	145	160	190	220	250	310
D	95	105	115	140	150	160	180	195	230	270	300	360
L	130	130	140	165	180	200	222	250	280	320	360	457
n-φd	4-φ14	4-φ14	4-φ14	4-φ18	4-φ18	4-φ18	8-φ18	8-φ18	8-φ23	8-φ25	8-φ25	12-φ25

主要外形及连接法兰尺寸GB-PN63 Main Outline and Connecting Flange Size-PN63

MEDLE	DN15	DN20	DN25	DN32	DN40	DN50	DN65	DN80	DN100	DN125	DN150	DN200
G	1/2"	3/4"	1"	1-1/4"	1-1/2"	2"	2-1/2"	3"	4"	5"	6"	8"
D3	15	20	25	30	40	50	65	80	100	125	150	200
D2	55	68	78	82	95	105	13	140	168	202	240	300
D1	75	90	100	110	125	135	160	170	200	240	280	345
D	105	125	135	150	165	175	200	210	250	295	340	405
L	140	152	165	178	190	216	241	283	305	381	403	419
n-φd	4-φ14	4-φ18	4-φ18	4-φ23	4-φ23	4-φ23	8-φ23	8-φ23	8-φ25	8-φ30	8-φ34	12-φ34

主要外形及连接法兰尺寸DIN-PN16 Main Outline and Connecting Flange Size-PN16

MEDLE	DN15	DN20	DN25	DN32	DN40	DN50	DN65	DN80	DN100	DN125	DN150	DN200
G	1/2"	3/4"	1"	1-1/4"	1-1/2"	2"	2-1/2"	3"	4"	5"	6"	8"
D3	15	20	25	30	40	50	65	80	100	125	150	200
D2	45	58	68	78	85	102	122	138	158	188	212	268
D1	65	75	85	100	110	125	145	160	180	210	240	295
D	95	105	115	140	150	165	185	200	220	250	285	340
L	115	120	125	130	140	150	170	180	190	325	350	400
n-φd	4-φ14	4-φ14	4-φ14	4-φ18	4-φ18	4-φ18	4-φ18	8-φ18	8-φ18	8-φ18	8-φ22	12-φ22



主要外形及连接法兰尺寸DIN-PN25 Main Outline and Connecting Flange Size-PN25

MEDLE	DN15	DN20	DN25	DN32	DN40	DN50	DN65	DN80	DN100	DN125	DN150	DN200
G	1/2"	3/4"	1"	1-1/4"	1-1/2"	2"	2-1/2"	3"	4"	5"	6"	8"
D3	15	20	25	30	40	50	65	80	100	125	150	200
D2	45	58	68	78	88	102	122	138	162	188	218	278
D1	65	75	85	100	110	125	145	160	190	220	250	310
D	95	105	115	140	150	165	185	200	235	270	300	360
L	115	120	125	130	140	150	170	180	190	325	350	400
n-φd	4-φ14	4-φ14	4-φ14	4-φ18	4-φ18	4-φ18	8-φ18	8-φ18	8-φ22	8-φ26	8-φ26	12-φ26

主要外形及连接法兰尺寸JIS-10K Main Outline and Connecting Flange Size-10K

MEDLE	DN15	DN20	DN25	DN32	DN40	DN50	DN65	DN80	DN100	DN125	DN150	DN200	DN250
G	1/2"	3/4"	1"	1-1/4"	1-1/2"	2"	2-1/2"	3"	4"	5"	6"	8"	10"
D3	15	20	25	30	40	50	65	80	100	125	150	200	250
D2	52	58	70	80	85	100	120	130	155	185	215	265	325
D1	70	75	90	100	105	120	140	150	175	210	240	290	355
D	95	100	125	135	140	155	175	185	210	250	280	330	400
L	108	117	127	140	165	178	190	203	229	330/356	340/394	450/457	533
b	12	14	14	16	16	16	18	18	18	20	22	22	24
n-φd	4-φ15	4-φ15	4-φ19	4-φ19	4-φ19	4-φ19	4-φ19	8-φ19	8-φ19	8-φ23	8-φ23	12-φ23	12-φ25

主要外形及连接法兰尺寸DIN-PN40 Main Outline and Connecting Flange Size-PN40

MEDLE	DN15	DN20	DN25	DN32	DN40	DN50	DN65	DN80	DN100	DN125	DN150	DN200
G	1/2"	3/4"	1"	1-1/4"	1-1/2"	2"	2-1/2"	3"	4"	5"	6"	8"
D3	15	20	25	30	40	50	65	80	100	125	150	200
D2	45	55	65	78	85	100	120	135	160	188	218	282
D1	65	75	85	100	110	125	145	160	190	220	250	320
D	95	105	115	135	145	160	180	195	230	270	300	375
L	115	120	125	130	140	150	170	180	190	325	350	400
n-φd	4-φ14	4-φ14	4-φ14	4-φ18	4-φ18	4-φ18	8-φ18	8-φ18	8-φ23	8-φ25	8-φ25	12-φ34

主要外形及连接法兰尺寸JIS-20K Main Outline and Connecting Flange Size-20K

MEDLE	DN15	DN20	DN25	DN32	DN40	DN50	DN65	DN80	DN100	DN125	DN150	DN200	DN250
G	1/2"	3/4"	1"	1-1/4"	1-1/2"	2"	2-1/2"	3"	4"	5"	6"	8"	10"
D3	15	20	25	30	40	50	65	80	100	125	150	200	250
D2	52	58	70	80	85	100	120	135	160	195	230	275	345
D1	70	75	90	100	105	120	140	160	185	225	260	305	380
D	95	100	125	135	140	155	175	200	225	270	305	350	430
L	140	152	165	178	190	216	241	282	305	381	403	502	568
b	14	16	16	18	18	18	20	22	24	26	28	30	34
n-φd	4-φ15	4-φ15	4-φ19	4-φ19	4-φ19	8-φ19	8-φ19	8-φ23	8-φ23	8-φ25	12-φ25	12-φ25	12-φ27

主要外形及连接法兰尺寸ANSI-150# Main Outline and Connecting Flange Size-150#

MEDLE	DN15	DN20	DN25	DN32	DN40	DN50	DN65	DN80	DN100	DN125	DN150	DN200	DN250
G	1/2"	3/4"	1"	1-1/4"	1-1/2"	2"	2-1/2"	3"	4"	5"	6"	8"	10"
D3	15	20	25	30	40	50	65	80	100	125	150	200	250
D2	34.9	42.9	50.8	63.5	73	92.1	104.8	127	157.2	185.7	215.9	269.9	323.8
D1	60.3	69.9	79.4	88.9	98.4	120.7	139.7	152.4	190.5	215.9	241.3	298.5	362
D	90	100	110	115	125	150	180	190	230	255	280	345	405
L	108	117	127	140	165	178	190	203	229	356	394	457	533
b	11.5	13	14.5	16	17.5	19.5	22.5	24	24	24	25.5	29	30.5
n-φd	4-φ16	4-φ16	4-φ16	4-φ16	4-φ16	4-φ19	4-φ19	4-φ19	8-φ19	8-φ22	8-φ22	8-φ22	12-φ25

主要外形及连接法兰尺寸ANSI-300# Main Outline and Connecting Flange Size-300#

MEDLE	DN15	DN20	DN25	DN32	DN40	DN50	DN65	DN80	DN100	DN125	DN150	DN200	DN250
G	1/2"	3/4"	1"	1-1/4"	1-1/2"	2"	2-1/2"	3"	4"	5"	6"	8"	10"
D3	15	20	25	30	40	50	65	80	100	125	150	200	250
D2	34.9	42.9	50.8	63.5	73	92.1	104.8	127	157.2	185.7	215.9	269.9	323.8
D1	66.7	82.6	88.9	98.4	114.3	127	149.2	168.3	200	235	269.9	330.2	387.4
D	95	115	125	135	155	165	190	210	255	280	320	380	445
L	140	152	165	178	190	216	241	282	305	381	403	502	568
b	14.5	16	17.5	19.5	21	22.5	25.5	29	32	35	37	41.5	48
n-φd	4-φ16	4-φ19	4-φ19	4-φ19	4-φ22	8-φ19	8-φ22	8-φ22	8-φ22	8-φ22	12-φ22	12-φ25	16-φ29

主要外形及连接法兰尺寸ANSI-600# Main Outline and Connecting Flange Size-600#

MEDLE	DN15	DN20	DN25	DN32	DN40	DN50	DN65	DN80	DN100	DN125	DN150	DN200	DN250
G	1/2"	3/4"	1"	1-1/4"	1-1/2"	2"	2-1/2"	3"	4"	5"	6"	8"	10"
D3	15	20	25	30	40	50	65	80	100	125	150	200	250
D2	34.9	42.9	50.8	63.5	73	92.1	104.8	127	157.2	185.7	215.9	269.9	323.8
D1	66.7	82.6	88.9	98.4	114.3	127	149.2	168.3	215.9	266.7	292.1	349.2	431.8
D	95	115	125	135	155	165	190	210	275	330	355	420	510
L	165	190	216	229	241	292	330	356	432	508	559	660	787
b	21	23	24	27.5	29	32	35	38.5	45	51.5	54.5	62	70
n-φd	4-φ16	4-φ19	4-φ19	4-φ19	4-φ22	8-φ19	8-φ22	8-φ22	8-φ25	8-φ29	12-φ29	12-φ32	16-φ35

气动三通法兰球阀

VP11-F3 VINCER PNEUMATIC 3-WAY FLANGED BALL VALVE

气动三通法兰球阀具有多种通道选择，帮助你实现多向流体控制，适用于复杂的管道系统。

Pneumatic three-way flange ball valve has a variety of channel options to help you achieve multi-directional fluid control and is suitable for complex pipeline systems.

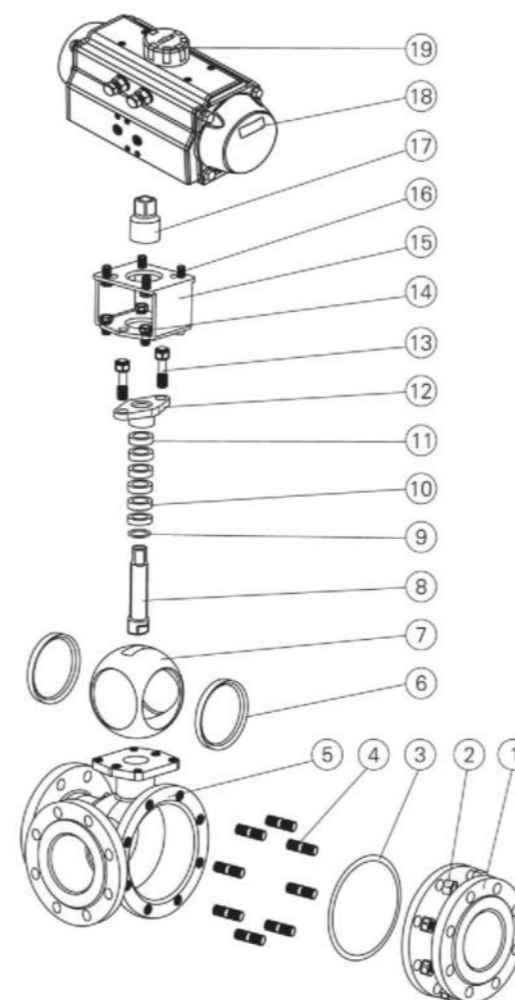
技术规范 Technical Parameter

- 设计标准 Design Standard: GB/T 12237、API 608、API 6D
- 结构长度 Face To Face Dimension: GB/T 12221、ASME B16.10、API 6D
- 连接法兰尺寸 Connecting Flange Size: GB/T 9113、HG20592、JB/T 79、GB/T 12224、ASME B16.5、ASME B16.47、ASME B16.11、ASME B16.25
- 试验和检验 Test & Inspection: JB/T 9092、GB/T 26480、API598、API 6D

优势 Advantage

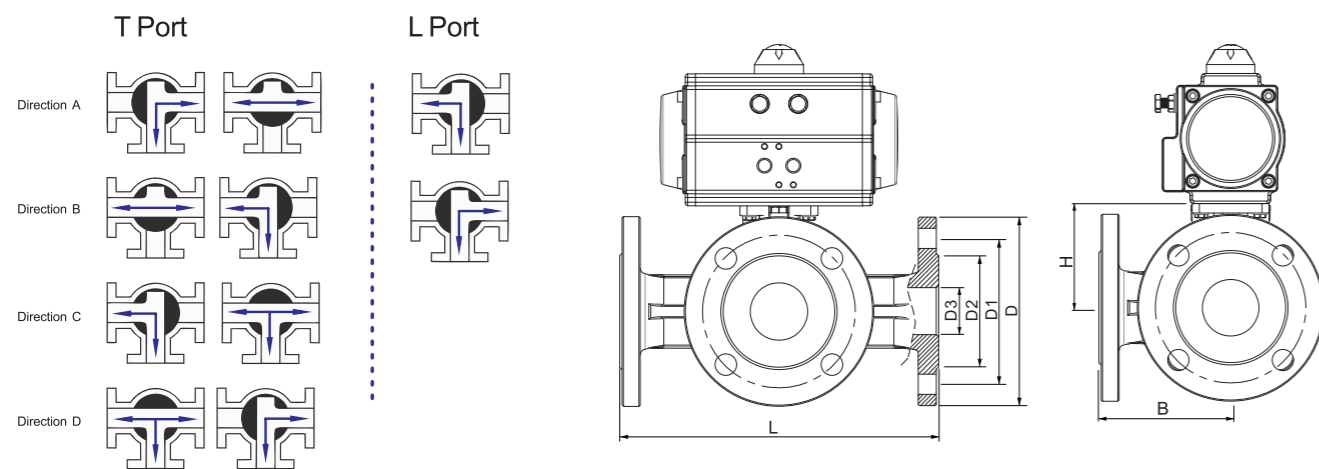
多功能性，耐腐蚀，高效节能

Versatility, Corrosion resistance, Energy efficient



主要零件材质表 Main Parts Materials

序号 No.	零件名称 Component	材质 Material		
		C	P	R
1	右阀体 Right Valve	WCB	304	304
2	螺母 Nut	35	3.6	3.6
3	垫片 Gasket	聚四氟乙烯(PTFE)、石墨金属复合垫 Graphite Metal Composite Pad		
4	螺栓 Screw	35	3.6	3.6
5	阀体 Body	WCB	304	304
6	阀座 Seat	PTFE、对位聚苯(PPL) 硬质合金 Hard Alloy		
7	球体 Ball	1Cr18Ni9Ti	3.6	3.6
8	阀杆 Stem	1Cr13	3.6	3.6
9	垫片 Gasket	1Cr18Ni9Ti	3.6	3.6
10	填料 Packing	聚四氟乙烯(PTFE)、柔石墨 Flexible Graphite		
11	衬套 Bushing	聚四氟乙烯(PTFE) 复合轴承 Composite Bearings		
12	压盖 Gland	WCB	304	304
13	螺栓 Screw	35	3.6	3.6
14	螺栓 Screw	35	3.6	3.6
15	连接支架 Connecting Yoke	1Cr18Ni9Ti	3.6	3.6
16	螺栓 Screw	35	3.6	3.6
17	连接套 Connecting Set	1Cr18Ni9Ti	3.6	3.6
18	气动装置 Pneumatic Device	AT Series、AW Series		
19	位置指示器 Location Indicator	塑料 Plastic		



主要外形及连接法兰尺寸ANSI-Class150 Main Outline and Connecting Flange Size-Class150

MEDLE	DN15	DN20	DN25	DN32	DN40	DN50	DN65	DN80	DN100	DN125	DN150	DN200
G	1/2"	3/4"	1"	1-1/4"	1-1/2"	2"	2-1/2"	3"	4"	5"	6"	8"
D3	15	20	25	30	40	50	65	80	100	125	150	200
D2	34.9	42.9	50.8	63.5	73	92.1	104.8	127	157.2	185.7	215.9	269.9
D1	60.3	69.9	79.4	88.9	98.4	120.7	139.7	152.4	190.5	215.9	241.3	298.5
D	90	100	110	115	125	150	180	190	230	255	280	345
L	150	164	180	200	220	240	260	280	320	380	440	550
H	53	58.5	70	77.5	88.5	92	107	119	150	200	240	300
B	72	80	90	100	110	120	130	140	160	190	220	260
n-φd	4-φ16	4-φ16	4-φ16	4-φ16	4-φ16	4-φ19	4-φ19	4-φ19	4-φ19	8-φ22	8-φ22	8-φ22

主要外形及连接法兰尺寸GB-PN16 Main Outline and Connecting Flange Size-PN16

MEDLE	DN15	DN20	DN25	DN32	DN40	DN50	DN65	DN80	DN100	DN125	DN150	DN200
G	1/2"	3/4"	1"	1-1/4"	1-1/2"	2"	2-1/2"	3"	4"	5"	6"	8"
D3	15	20	25	30	40	50	65	80	100	125	150	200
D2	45	55	65	78	85	100	120	135	155	185	210	265
D1	65	75	85	100	110	125	145	160	180	210	240	295
D	95	105	115	135	145	160	180	195	215	245	280	335
L	150	164	180	200	220	240	260	280	320	380	440	550
H	53	58.5	70	77.5	88.5	92	107	119	150	200	240	300
B	72	80	90	100	110	120	130	140	160	190	220	260
n-φd	4-φ14	4-φ14	4-φ14	4-φ18	4-φ18	4-φ18	4-φ18	8-φ18	8-φ18	8-φ18	8-φ18	12-φ23

主要外形及连接法兰尺寸ANSI-Class300 Main Outline and Connecting Flange Size-Class300

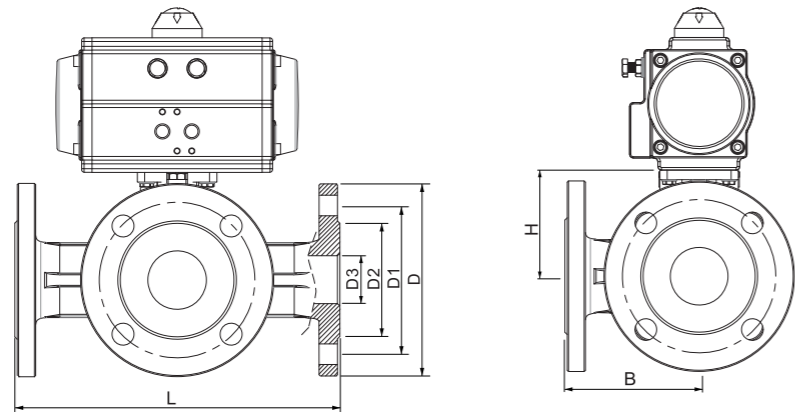
MEDLE	DN15	DN20	DN25	DN32	DN40	DN50	DN65	DN80	DN100	DN125	DN150	DN200
G	1/2"	3/4"	1"	1-1/4"	1-1/2"	2"	2-1/2"	3"	4"	5"	6"	8"
D3	15	20	25	30	40	50	65	80	100	125	150	200
D2	34.9	42.9	50.8	63.5	73	92.1	104.8	127	157.2	185.7	215.9	269.9
D1	66.7	82.6	88.9	98.4	114.3	127	149.2	168.3	200	235	269.9	330.2
D	95	115	125	135	155	165	190	210	255	280	320	380
L	150	164	180	200	220	240	260	280	320	380	440	550
H	53	58.5	70	77.5	88.5	92	107	119	150	200	240	300
B	72	80	90	100	110	120	130	140	160	190	220	260
n-φd	4-φ16	4-φ19	4-φ19	4-φ19	4-φ22	4-φ19	8-φ22	8-φ22	8-φ22	8-φ22	12-φ22	12-φ25

主要外形及连接法兰尺寸GB-PN25 Main Outline and Connecting Flange Size-PN25

MEDLE	DN15	DN20	DN25	DN32	DN40	DN50	DN65	DN80	DN100	DN125	DN150	DN200
G	1/2"	3/4"	1"	1-1/4"	1-1/2"	2"	2-1/2"	3"	4"	5"	6"	8"
D3	15	20	25	30	40	50	65	80	100	125	150	200
D2	45	55	65	78	85	100	120	135	160	190	220	250
D1	65	75	85	100	110	125	145	160	190	220	250	310
D	95	105	115	140	150	160	180	195	230	270	300	360
L	150	164	180	200	220	240	260	280	320	380	440	550
H	53	58.5	70	77.5	88.5	92	107	119	150	200	240	300
B	72	80	90	100	110	120	130	140	160	190	220	260
n-φd	4-φ14	4-φ14	4-φ14	4-φ18	4-φ18	4-φ18	8-φ18	8-φ18	8-φ23	8-φ25	8-φ25	12-φ25

主要外形及连接法兰尺寸ANSI-Class600 Main Outline and Connecting Flange Size-Class600

MEDLE	DN15	DN20	DN25	DN32	DN40	DN50	DN65	DN80	DN100	DN125	DN150	DN200
G	1/2"	3/4"	1"	1-1/4"	1-1/2"	2"	2-1/2"	3"	4"	5"	6"	8"
D3	15	20	25	30	40	50	65	80	100	125	150	200
D2	34.9	42.9	50.8	63.5	73	92.1	104.8	127	157.2	185.7	215.9	269.9
D1	66.7	82.6	88.9	98.4	114.3	127	149.2	168.3	215.9	266.7	292.1	349.2
D	95	115	125	135	155	165	190	210	275	330	355	420
L	150	164	180	200	220	240	260	280	320	380	440	550
H	53	58.5	70	77.5	88.5	92	107	119	150	200	240	300
B	72	80	90	100	110	120	130	140	160	190	220	260
n-φd	4-φ16	4-φ19	4-φ19	4-φ19	4-φ22	8-φ19	8-φ22	8-φ22	8-φ25	8-φ29	12-φ29	12-φ32



气动四通法兰球阀

VP11-F4 VINCER PNEUMATIC 4-WAY FLANGED BALL VALVE

气动四通法兰球阀采用法兰连接的四通设计。它非常适合复杂的流体控制系统，可以在多个流路之间进行高效切换，这使其在各种工业应用中至关重要。

The pneumatic four-way flanged ball valve is featuring a four-way design with flanged connections. Ideal for complex fluid control systems, it allows for efficient switching between multiple flow paths, making it essential in various industrial applications.



技术规范 Technical Parameter

- 设计标准 Design Standard: GB/T 12237、API 608、API 6D
- 结构长度 Face To Face Dimension: GB/T 12221、ASME B16.10、API 6D
- 连接法兰尺寸 Connecting Flange Size: GB/T 9113、HG20592、JB/T 79、GB/T 12224、ASME B16.5、ASME B16.47、ASME B16.11、ASME B16.25
- 试验和检验 Test & Inspection: JB/T 9092、GB/T 26480、API598、API 6D

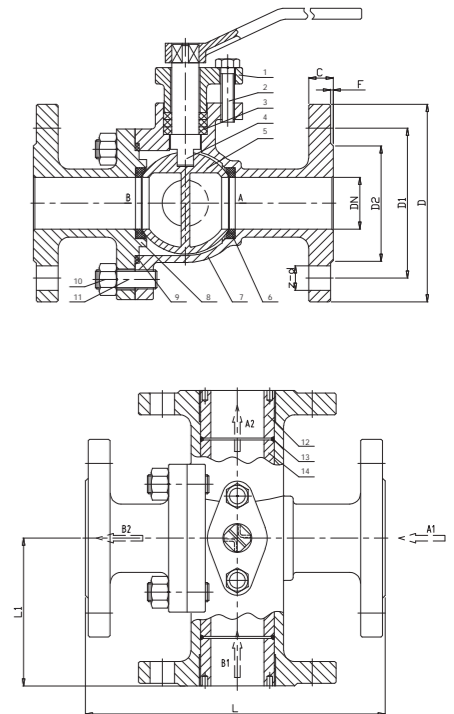
优势 Advantage

多功能性，耐腐蚀，高效节能

Versatility, Corrosion resistance, Energy efficient

主要零件材质表 Main Parts Materials

序号 No.	零件名称	Component	数量 Qty	材质 Material
1	填料压盖	Packing gland	1	WCB/CF8/CF8M
2	内六角螺栓	Allen socket bolts	4	A193/S201/S304
3	填料	Packing	4	PTFE/PPL
4	阀杆	Stem	1	S201/S304/S316
5	球体	Ball	2	WCB/CF8/CF8M
6	密封圈	Ball seat	1	PTFE/PPL
7	阀体	Body	1	WCB/CF8/CF8M
8	阀盖	Bonnet	1	WCB/CF8/CF8M
9	阀盖密封垫	Bonnet gasket	5~10	PTFE/柔性石墨
10	螺帽	Nut	1	A193/S201/S304
11	螺栓	Screw	2	A194/S201/S304
12	外套	Outer sleeve	2	WCB/CF8/CF8M
13	O型圈	O-ring	2	NBR/FR
14	内套	Inner sleeve	2	WCB/CF8/CF8M



主要外形及连接法兰尺寸JIS-10K Main Outline and Connecting Flange Size-10K

MEDLE	DN15	DN20	DN25	DN32	DN40	DN50	DN65	DN80	DN100	DN125	DN150	DN200
G	1/2"	3/4"	1"	1-1/4"	1-1/2"	2"	2-1/2"	3"	4"	5"	6"	8"
D3	15	20	25	30	40	50	65	80	100	125	150	200
D2	52	58	70	80	85	100	120	130	155	185	215	265
D1	70	75	90	100	105	120	140	150	175	210	240	290
D	95	100	125	135	140	155	175	185	210	250	280	330
L	150	164	180	200	220	240	260	280	320	380	440	550
H	53	58.5	70	77.5	88.5	92	107	119	150	200	240	300
B	72	80	90	100	110	120	130	140	160	190	220	260
n-φd	4-φ15	4-φ15	4-φ19	4-φ19	4-φ19	4-φ19	4-φ19	8-φ19	8-φ19	8-φ23	8-φ23	12-φ23

主要外形及连接法兰尺寸JIS-20K Main Outline and Connecting Flange Size-20K

MEDLE	DN15	DN20	DN25	DN32	DN40	DN50	DN65	DN80	DN100	DN125	DN150	DN200
G	1/2"	3/4"	1"	1-1/4"	1-1/2"	2"	2-1/2"	3"	4"	5"	6"	8"
D3	15	20	25	30	40	50	65	80	100	125	150	200
D2	52	58	70	80	85	100	120	135	160	195	230	275
D1	70	75	90	100	105	120	140	160	185	225	260	305
D	95	100	125	135	140	155	175	200	225	270	305	350
L	150	164	180	200	220	240	260	280	320	380	440	550
H	53	58.5	70	77.5	88.5	92	107	119	150	200	240	300
B	72	80	90	100	110	120	130	140	160	190	220	260
n-φd	4-φ15	4-φ15	4-φ19	4-φ19	4-φ19	8-φ19	8-φ19	8-φ23	8-φ23	8-φ25	8-φ25	12-φ25

主要外形及连接法兰尺寸GB-PN16 Main Outline and Connecting Flange Size-PN16

MEDLE	DN15	DN20	DN25	DN32	DN40	DN50	DN65	DN80	DN100	DN125	DN150
L	150	160	180	200	220	240	260	280	320	380	440
D	95	105	115	135	145	160	180	195	215	245	280
K	65	75	85	100	110	125	145	160	180	210	240
R	45	58	68	78	88	102	122	138	158	188	212
C - F	14 - 2	14 - 2	14 - 2	16 - 2	16 - 2	16 - 3	18 - 3	20 - 3	20 - 3	22 - 3	124 - 3
n-φd	4-φ14	4-φ14	4-φ14	4-φ18	4-φ18	4-φ18	4-φ18	8-φ18	8-φ18	8-φ18	8-φ22

气动塑料球阀

VP11-P VINCER PNEUMATIC PLASTIC BALL VALVE

气动两通塑料球阀采用优质塑料材料制成，具有轻便、耐腐蚀等特点，适用于化工、水处理等领域。

Pneumatic two-way plastic ball valve is made of high-quality plastic materials and is lightweight and corrosion-resistant. It is suitable for chemical industry, water treatment and other fields.

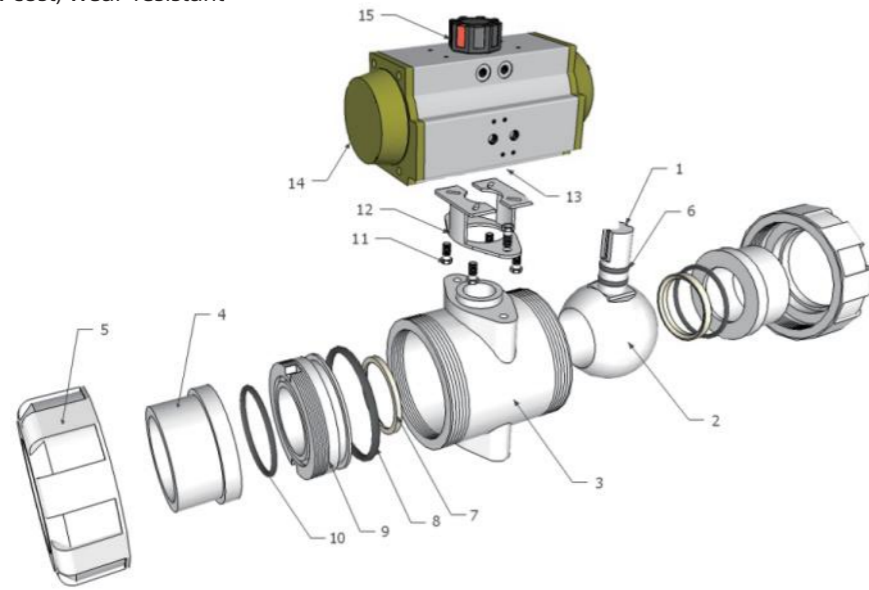
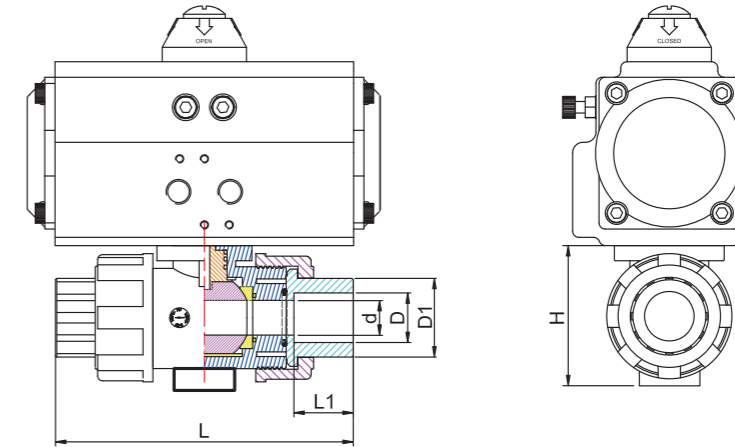
技术规范 Technical Parameter

- 连接尺寸 Connecting Size: GB/T 17219
- 试验和检验 Test & Inspection: GB/T 2828.1

优势 Advantage

轻质耐腐蚀，低成本，耐磨损

Corrosion-resistant, Low cost, Wear-resistant



主要零件材质表 Main Parts Materials

序号 No.	零件名称	Component	材质 Material
1	阀杆	Stem	SS304、304L、316、316L
2	阀芯	Ball	UPVC/PPH/CPVC/PVDF
3	阀体	Body	UPVC/PPH/CPVC/PVDF
4	接管	Endconnector	UPVC/PPH/CPVC/PVDF
5	锁母	Union Nut	UPVC/PPH/CPVC/PVDF
6	O型环	O-Ring	PTFE
7	密封	Seat Seal	EPDM/FPM
8	承载体	Seat	UPVC/PPH/CPVC/PVDF
9	O型环	O-Ring	EPDM/FPM
10	螺栓	Screw	不锈钢304 SS304
11	连接支架	Connecting Yoke	不锈钢304 SS304
12	连接套	Connecting Set	不锈钢304 SS304
13	气动执行器	Pneumatic Actuator	AT Series
14	位置指示器	Location Indicator	塑料 Plastic

主要外形及连接尺寸-PN16(1.6MPa) Dimension of 2 way pneumatic UPVC ball valve-PN16

MEDLE	DN15	DN20	DN25	DN32	DN40	DN50	DN65	DN80	DN100	DN125	DN150	DN200	
G	1/2"	3/4"	1"	1-1/4"	1-1/2"	2"	2-1/2"	3"	4"	5"	6"	8"	
GB=DIN	d	16	20	25	30	38	50	63	78	100	125	150	200
	D	20	25	32	40	50	63	75	90	110	141.3	168.3	225
ANSI	d	16	20	25	30	38	50	63	78	100	125	150	200
	D	21.3	26.7	33.4	42.2	48.3	60.3	73	88.9	114.3	141.3	168.3	219
JIS	d	16	20	25	30	38	50	63	78	100	125	150	200
	D	22	26	32	38	48	60	76	89	114	140	165	216
UK	d	16	20	25	30	38	50	63	78	100	125	150	200
	D	22	26	34	42	48	60	76	89	114	140	165	216
D1	30	36	45	55	64	77	96	112	141				
L1	22.8	25	28.5	32	34.8	39	46	48	64.5				
L	121.8	134.5	150.2	166.8	179	205	233	257	309				
H	61	74	90	104	121	146	169	220	255				

气动塑料三通球阀

VP11-P3 VINCER PNEUMATIC 3-WAY PLASTIC BALL VALVE

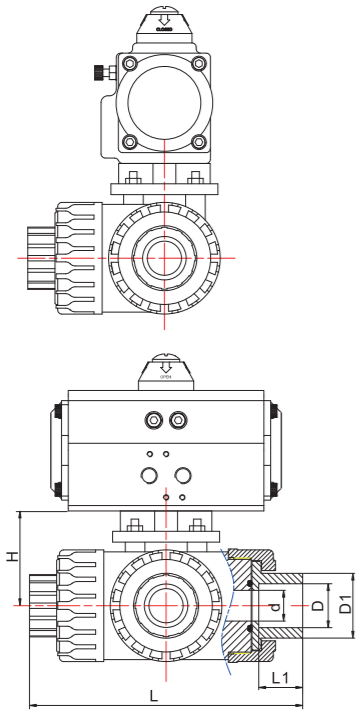
气动三通塑料球阀可实现多种流体控制方式，为你提供多功能的塑料阀门解决方案。
Pneumatic three-way plastic ball valve can realize a variety of fluid control methods, providing you with multi-functional plastic valve solutions.

技术规范 Technical Parameter

- 连接尺寸 Connecting Size: GB/T 17219
- 试验和检验 Test & Inspection: GB/T 2828.1

优势 Advantage

高密封性，耐腐蚀，安装方便
High sealing performance, Corrosion resistance, Easy installation



主要零件材质表 Main Parts Materials

序号 No.	零件名称 Component	材质 Material
1	位置指示器 Location Indicator	塑料 Plastic
2	气动执行器 Pneumatic Actuator	AT Series
3	连接套 Connecting Set	不锈钢304 Stainless Steel 304
4	阀杆 Stem	不锈钢304、304L、316、316L Stainless Steel 304, 304L, 316, 316L
5	螺栓 Screw	不锈钢304、316L Stainless Steel 304, 316L
6	填料 Packing	聚四氟乙烯(PTFE)
7	O型环 O-Ring	EPDM/VITON
8	阀座 Seat	UPVC/PPH/CPVC
9	球体 Ball	UPVC/PPH/CPVC
10	锁母 Union Nut	UPVC/PPH/CPVC
11	接管 Endconnector	UPVC/PPH/CPVC
12	阀体 Body	UPVC/PPH/CPVC

主要外形及连接尺寸 Main Outline and Connecting

	MEDLE	DN15	DN20	DN25	DN32	DN40	DN50
G		1/2"	3/4"	1"	1-1/4"	1-1/2"	2"
d		14	20	25	30	38	50
D		20	25	32	40	50	63
D1		30	36	45	55	64	77
L1		22.8	25	28.5	32	34.8	39
L		163	172	200	208	240	246
H		69	69	72	72	110	110

气动二通卫生级球阀

VP11-K VINCER PNEUMATIC SANITARY CLAMP BALL VALVE

气动二通卫生级卡箍球阀适用于食品、制药等卫生级应用，是你的卫生级流体控制的可靠选择。

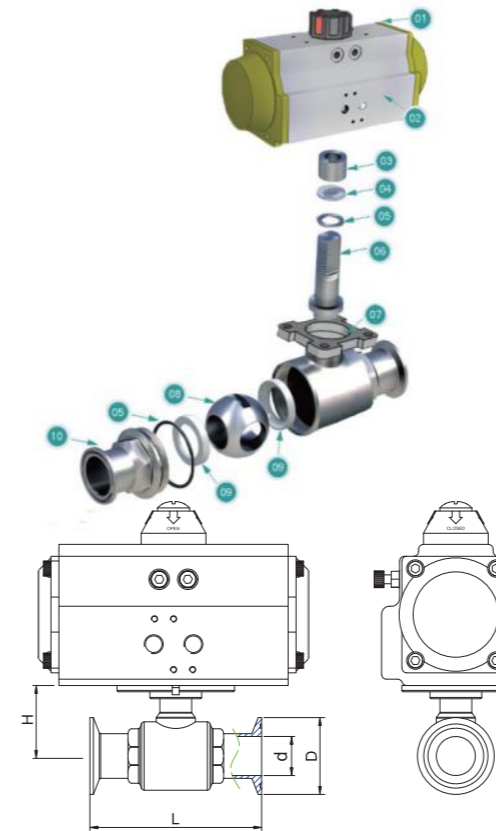
Pneumatic two-way sanitary clamp ball valve is suitable for sanitary applications such as food and pharmaceuticals, and is your reliable choice for sanitary fluid control.

技术规范 Technical Parameter

- 设计依据 Design Basis: DIN、ISO/IDF、3A、ASME/BPE标准、SMS

优势 Advantage

卫生级设计，安装方便，耐腐蚀
Hygienic design, Easy installation, Corrosion resistance



主要零件材质表 Main Parts Materials

序号 No.	零件名称 Component	材质 Material
1	位置指示器 Location Indicator	塑料 Plastic
2	气动执行器 Pneumatic Actuator	AT Series
3	连接套 Connecting Set	不锈钢304 Stainless Steel 304
4	填料 Packing	聚四氟乙烯(PTFE)
5	O型环 O-Ring	EPDM/FPM
6	右阀体 Body	不锈钢CF8、CF8M、CF3M Stainless Steel CF8, CF8M, CF3M
7	阀杆 Stem	不锈钢304、316、316L Stainless Steel 304, 316, 316L
8	球体 Ball	不锈钢304、316、316L Stainless Steel 304, 316, 316L
9	阀座 Seat	PTFE、VMQ(硅橡胶)
10	左阀体 Body	不锈钢304、316、316L Stainless Steel 304, 316, 316L

主要外形及连接卡箍尺寸1.6MPa Main Outline and Connecting 1.6MPa

Size	3/4"	1"	1-1/4"	1-1/2"	2"	2-1/2"	3"	3-1/2"	4"
d	ø19	ø25	ø32	ø38	ø51	ø63	ø76	ø89	ø102
d	16	21	29	35	47	59	72	85	97
D	50.5	50.5	50.5	50.5	64	77.5	91	106	119
L	102	117	123	140	180	200	220	235	275
Actuator	AT52			AT63	AT75	AT83	AT92	AT92	AT105
Weight	2.08	2.18	2.23	2.91	4.68	5.88	8.78	11.38	14.78

气动三通卫生级球阀

VP11-K3 VINCER PNEUMATIC CLAMP 3-WAY BALL VALVE

气动三通卫生级卡箍球阀具有多种流体控制方式，适用于复杂的卫生级流体控制需求。

Pneumatic three-way sanitary clamp ball valve has a variety of fluid control methods and is suitable for complex sanitary fluid control needs.

技术规范 Technical Parameter

- 设计依据 Design Basis: DIN、ISO/IDF、3A、ASME/BPE标准、SMS

优势 Advantage

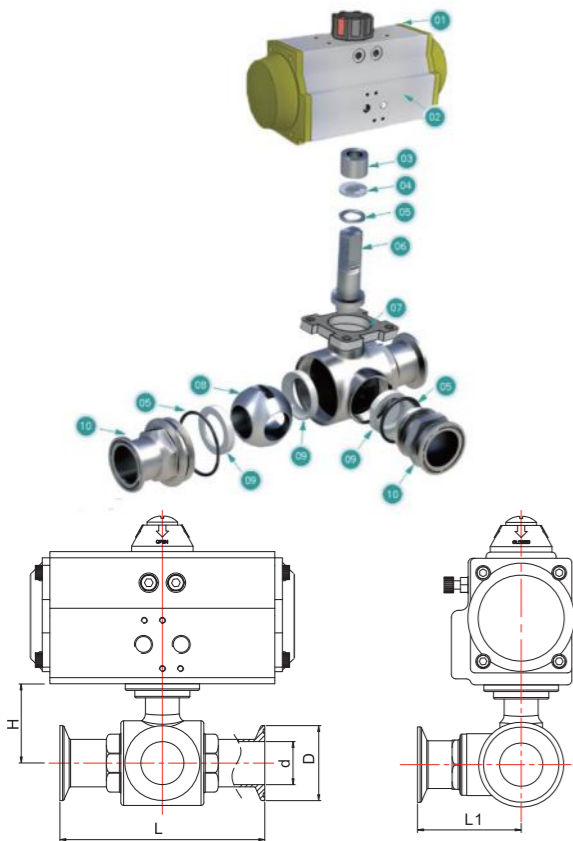
多功能性，卫生级设计，高效节能

Versatility, Hygienic design, Energy efficient



主要零件材质表 Main Parts Materials

序号 No.	零件名称 Component	材质 Material
1	位置指示器 Location Indicator	塑料 Plastic
2	气动执行器 Pneumatic Actuator	AT Series
3	连接套 Connecting Set	不锈钢304 Stainless Steel 304
4	填料 Packing	聚四氟乙烯(PTFE)
5	O型环 O-Ring	EPDM/FPM
6	主阀体 Body	不锈钢CF8、CF8M、CF3、CF3M Stainless Steel CF8、CF8M、CF3、CF3M
7	阀杆 Stem	不锈钢304、316、316L Stainless Steel 304、316、316L
8	球体 Ball	不锈钢304、304L、316、316L Stainless Steel 304、304L、316、316L
9	阀座 Seat	PTFE、SIL(硅胶)
10	分阀体 Body	不锈钢304、304L、316、316L Stainless Steel 304、304L、316、316L



主要外形及连接尺寸 Main Outline and Connecting

Size	3/4"	1"	1-1/4"	1-1/2"	2"	2-1/2"	3"	3-1/2"	4"
	Ø19	Ø25	Ø32	Ø38	Ø51	Ø63	Ø76	Ø89	Ø102
d	16.5	22	28.5	35	47.5	58.2	72	84.8	98.3
D	50.5	50.5	50.5	50.5	64	77.5	91	106	119
L	107	125	131	145	170	170	210	220	240
L1	52	60	67.5	75	84	97	105	110	120
H	39	38.5	41.5	48.5	54.5	64	105	110	120

气动高压球阀

VP11-H VINCER PNEUMATIC HIGH-PRESSURE BALL VALVE

气动两通高压球阀是一种专为高压流体控制而设计的阀门，能够快速、可靠地控制高压流体。

Pneumatic two-way high-pressure ball valve is a valve specially designed for high-pressure fluid control, which can control high-pressure fluid quickly and reliably.

技术规范 Technical Parameter

- 设计标准 Design Standard: HGT 1289-2001
- 试验和检验 Test & Inspection: GB/T 12247-2009

优势 Advantage

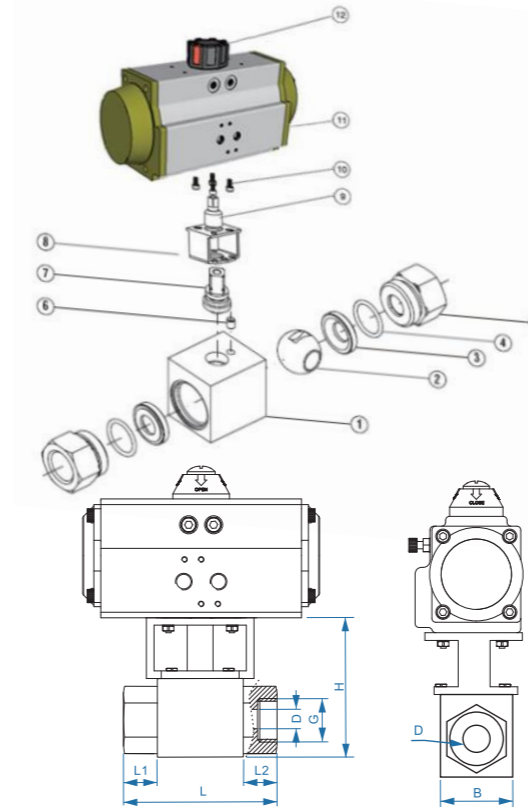
耐高压，耐磨损，安全可靠

High pressure resistance, Wear resistance, Safe and reliable



主要零件材质表 Main Parts Materials

序号 No.	零件名称 Component	材质 Material
1	主阀体 Body	不锈钢304、316、316L Stainless Steel 304、316、316L
2	球体 Ball	不锈钢304、316、316L Stainless Steel 304、316、316L
3	阀座 Seat	聚四氟乙烯(PTFE)、对位聚苯(PPL)
4	O型环 O-Ring	聚四氟乙烯(PTFE)
5	分阀体 Body	不锈钢CF8、CF8M、CF3、CF3M Stainless Steel CF8、CF8M、CF3、CF3M
6	圆柱销 Cylindrical Pin	不锈钢304、316 Stainless Steel 304、316
7	阀杆 Stem	不锈钢304、316、316L Stainless Steel 304、316、316L
8	连接支架 Connecting Yoke	不锈钢304、316 Stainless Steel 304、316
9	连接套 Connecting Set	不锈钢304、316 Stainless Steel 304、316
10	Screw 螺栓	不锈钢304 Stainless Steel 304
11	气动执行器 Pneumatic Actuator	AT Series
12	位置指示器 Location Indicator	塑料 Plastic



主要外形及连接尺寸 Dimension of 2 way high-pressure pneumatic ball valve

MEDLE	DN08	DN10	DN15	DN20	DN25	DN32	DN40	DN50
G	1/4"	3/8"	1/2"	3/4"	1"	1-1/4"	1-1/2"	2"
D	6	8	10	14.6	19.6	24.8	30	39.6
B	45	45	45	55	66	77	95	
H	43	43	43	53	64	70	79	
L	80	80	82	101	120	127	150	
L1	19	19	20	25	29	30	28	
L2	19	19	20	25	29	30	28	

气动高压三通球阀

VP11-H3 VINCER PNEUMATIC HIGH-PRESSURE 3-WAY BALL VALVE

气动三通高压球阀具有优异的耐压性能和可靠的操作特性，可实现多种流体控制方式。
Pneumatic three-way high-pressure ball valve has excellent pressure resistance and reliable operating characteristics, and can realize a variety of fluid control methods.

技术规范 Technical Parameter

- 设计标准 Design Standard: HGT 1289-2001
- 试验和检验 Test & Inspection: GB/T 12247-2009

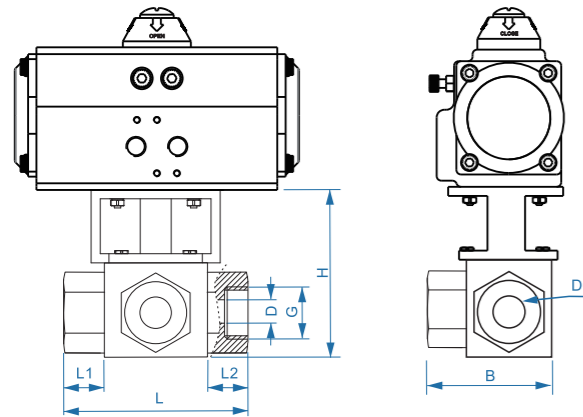
优势 Advantage

耐高压，耐磨损，安全可靠
High pressure resistance, Wear resistance, Safe and reliable



主要零件材质表 Main Parts Materials

序号 No.	零件名称 Component	材质 Material
1	主阀体 Body	不锈钢304、304L、316、316L Stainless Steel 304、304L、316、316L
2	球体 Ball	不锈钢304、304L、316、316L Stainless Steel 304、304L、316、316L
3	阀座 Seat	PTFE、对位聚苯(PPL)
4	O型环 O-Ring	聚四氟乙烯(PTFE)
5	分阀体 Body	不锈钢CF8、CF8M、CF3、CF3M Stainless Steel CF8、CF8M、CF3、CF3M
6	圆柱销 Cylindrical Pin	不锈钢304、316 Stainless Steel 304、316
7	阀杆 Stem	不锈钢304、316、316L Stainless Steel 304、316、316L
8	连接支架 Connecting Yoke	不锈钢304、316 Stainless Steel 304、316
9	连接套 Connecting Set	不锈钢304、316 Stainless Steel 304、316
10	Screw 螺栓	不锈钢304、316 Stainless Steel 304、316
11	气动执行器 Pneumatic Actuator	AT Series
12	位置指示器 Location Indicator	塑料 Plastic



主要外形及连接尺寸 Main Outline and Connecting

MEDLE	DN08	DN10	DN15	DN20	DN25	DN32	DN40	DN50
G	1/4"	3/8"	1/2"	3/4"	1"	1-1/4"	1-1/2"	2"
D	8	10	15	20	25	32	40	50
B	64	64	65	80	95	107	123	
H	43	43	43	53	64	70	79	
L	80	80	82	101	120	127	150	
L1	19	19	20	25	29	30	28	
L2	19	19	20	25	29	30	28	

气动PTFE衬氟球阀

VP11-F-PTFE VINCER PNEUMATIC PTFE-LINED BALL VALVE

气动衬氟球阀具有优异的耐腐蚀性能，适用于腐蚀性介质的流体控制，广泛应用于化工、制药、电力等领域。

Pneumatic PTFE-lined ball valves have excellent corrosion resistance and are suitable for fluid control of corrosive media. They are widely used in chemical industry, pharmaceuticals, electric power and other fields.

技术规范 Technical Parameter

- 设计标准 Design Standard: GB/T 12237
- 结构长度 Face To Face Dimension: GB/T 12221
- 连接法兰尺寸 Connecting Flange Size: GB/T 9113、HG20592、JB/T 79、GB/T 12224
- 试验和检验 Test & Inspection: JB/T 9092、GB/T 26480

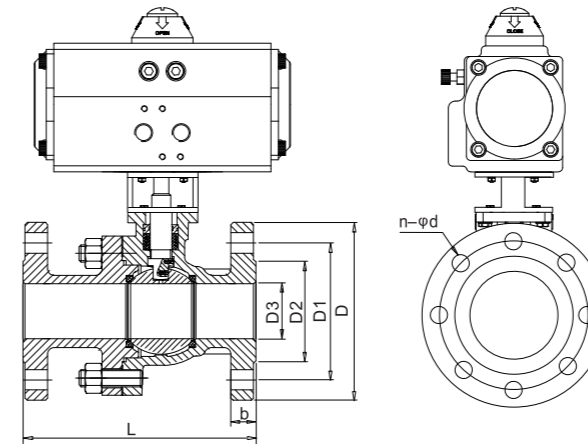
优势 Advantage

多路控制，耐腐蚀性，高效节能
Multi-channel control, Corrosion resistance, High efficiency and energy saving



主要零件材质表 Main Parts Materials

序号 No.	零件名称 Component	材质 Material
1	主阀体 Body	铸铁、铸钢、不锈钢 Cast Iron, WCB, Stainless Steel
2	球体 Ball	铸铁、铸钢、不锈钢 Cast Iron, WCB, Stainless Steel
3	内衬材料/阀座 Lining Material/Seat	聚四氟乙烯(PTFE)
4	填料 Packing	聚四氟乙烯(PTFE)
5	压盖 Cap	铸铁、铸钢、不锈钢 Cast Iron, WCB, Stainless Steel
6	阀杆 Stem	不锈钢304、316 Stainless Steel 304、316
7	连接套 Connecting Set	不锈钢304、316 Stainless Steel 304、316
8	Screw 螺栓	不锈钢304、316 Stainless Steel 304、316
9	气动执行器 Pneumatic Actuator	AT Series
10	位置指示器 Location Indicator	塑料 Plastic



主要外形及连接法兰尺寸1.6MPa Main Outline and Connecting Flange Size 1.6MPa

MEDLE	DN15	DN20	DN25	DN32	DN40	DN50	DN65	DN80	DN100	DN125	DN150	DN200
Inch	1/2"	3/4"	1"	1-1/4"	1-1/2"	2"	2-1/2"	3"	4"	5"	6"	8"
D3	15	20	25	30	40	50	65	80	100	125	150	200
D2	45	55	65	78	85	100	120	135	155	185	210	265
D1	65	75	85	100	110	125	145	160	180	210	240	295
D	95	105	115	135	145	160	180	195	215	245	280	335
b	14	16	16	18	18	20	20	22	22	24	24	26
L	140	140	150	165	180	200	220	250	280	320	360	400
n-φd	4-φ14	4-φ14	4-φ14	4-φ18	4-φ18	4-φ18	4-φ18	4-φ18	4-φ18	4-φ18	8-φ23	12-φ23

气动薄型球阀

VP11-I VINCER PNEUMATIC ITALIAN BALL VALVE

气动薄型对夹球阀结构紧凑，适用于有限空间的流体控制，具有快速开闭、可靠密封等优势。

Pneumatic italian ball valve has a compact structure and is suitable for fluid control in limited spaces. It has the advantages of quick opening and closing and reliable sealing.

技术规范 Technical Parameter

- 设计标准 Design Standard: GB/T 12237
- 结构长度 Face To Face Dimension: GB/T 12221
- 连接法兰尺寸 Connecting Flange Size: GB/T 9113、HG20592、JB/T 79、GB/T 12224
- 试验和检验 Test & Inspection: JB/T 9092、GB/T 26480

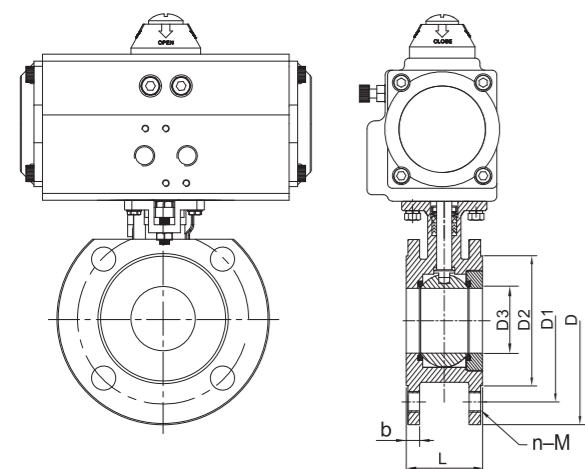
优势 Advantage

结构紧凑，耐高温，快速开闭

Compact structure, High temperature resistance, Quick opening and closing

主要零件材质表 Main Parts Materials

序号 No.	零件名称 Component	材质 Material
1	主阀体 Body	不锈钢304、304L、316、316L Stainless Steel 304、304L、316、316L
2	球体 Ball	不锈钢304、304L、316、316L Stainless Steel 304、304L、316、316L
3	阀座 Seat	PTFE、对位聚苯(PPL)
4	O型环 O-Ring	聚四氟乙烯(PTFE)
5	填料 Packing	聚四氟乙烯(PTFE)
6	阀杆 Stem	不锈钢304、316、316L Stainless Steel 304、316、316L
7	连接套 Connecting Set	不锈钢304、316 Stainless Steel 304、316
8	Screw 螺栓	不锈钢304、316 Stainless Steel 304、316
9	气动执行器 Pneumatic Actuator	AT Series
10	位置指示器 Location Indicator	塑料 Plastic



主要外形及连接法兰尺寸1.6MPa Main Outline and Connecting Flange Size 1.6MPa

MEDLE	DN25	DN32	DN40	DN50	DN65	DN80	DN100
G	1"	1-1/4"	1-1/2"	2"	2-1/2"	3"	4"
D3	23.5	31	36	44	55	70	88
D2	68	76	90	103	123	138	159
D1	85	100	110	125	145	160	180
D	98.5	135	128	142	158	187	206
L	44	53	63	72	95	120	139
b	16	16	18	18	18	21	21
n-M	4-M10	4-M14	4-M14	4-M14	4-M14	8-M14	8-M14



气动V型球阀

VP11-V VINCER PNEUMATIC V-PORT BALL VALVE

气动V型球阀采用V型球体设计，可实现粉料、颗粒介质的流体控制，具有良好的流量调节性能。

Pneumatic V-port ball valve adopts V-shaped ball design, which can realize fluid control of powder and granular media and has good flow regulation performance.

技术规范 Technical Parameter

- 设计标准 Design Standard: GB/T 12237、API 608、API 6D
- 结构长度 Face To Face Dimension: GB/T 12221、ASME B16.10、API 6D
- 连接法兰尺寸 Connecting Flange Size: GB/T 9113、HG20592、JB/T 79、GB/T 12224、ASME B16.5、ASME B16.47、ASME B16.11、ASME B16.25
- 试验和检验 Test & Inspection: JB/T 9092、GB/T 26480、API 598、API 6D

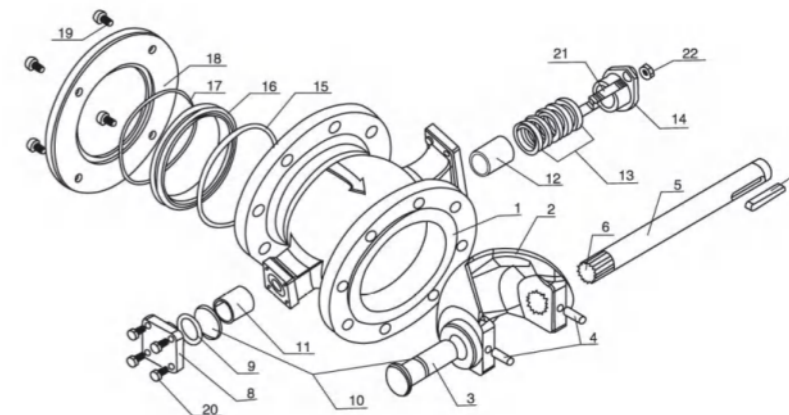
优势 Advantage

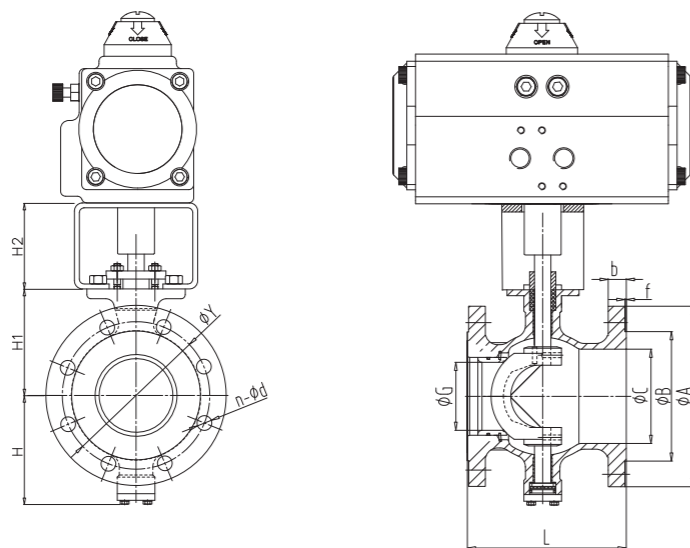
流体控制精准，耐高温高压，耐磨损

Precise fluid control, High temperature and high pressure resistance, Wear resistance

主要零件材质表 Main Parts Materials

序号 No.	零件名称 Component	数量 Qty	材质 Material
1	阀体 Body	1	WCB、CF8、CF8M、CF3、CF3M
2	球体 Ball	1	CF8、CF8M+镀硬铬或超音速喷涂
3	后阀杆 Rear Stem	1	17-4PH、SS316
4	圆柱销 Cylindrical Pin	1	SS304、S3316
5	前阀杆 Front Stem	2	17-4PH、SS316
6	花键 Spline	1	17-4PH、SS316
7	平键 Flat Key	1	SS304、45#
8	后压键 After Gland	1	CF8、CF8M
9	O形圈 O-Ring	1	氟橡胶 Viton
10	调整垫 Adjust Pad	各1	聚四氟乙烯(PTFE)
11	自润滑轴承 Self-Lubricating Bearings	1	复合材料 Composite Material
12	自润滑轴承 Self-Lubricating Bearings	1	复合材料 Composite Material
13	填料 Packing	1组	聚四氟乙烯(PTFE)
14	填料压盖 Gland	1	CF8
15	O形圈 O-Ring	1	氟橡胶 Viton
16	密封座 Seal Block	1	PTFE、CF8、CF8M+镀硬铬或超音速喷涂
17	密封座弹簧 Seal Block Spring	1	SS316
18	密封座盖 Sealing Lid	1	Q235、SS304、S3316
19	内六角螺钉 Inner Hexagon Screw		SS304
20	六角螺钉 Hexagon Screw	4	SS304





主要外形及连接法兰尺寸-1.6MPa Main Outline and Connecting Flange Size-1.6MPa

MEDLE	DN25	DN32	DN40	DN50	DN65	DN80	DN100	DN125	DN150	DN200
Inch	1"	1-1/4"	1-1/2"	2"	2-1/2"	3"	4"	5"	6"	8"
A	115	140	150	165	185	200	220	250	285	340
B	65	76	84	99	118	132	156	184	211	266
C	38	45	50	62	73	90	115	134	164	206
G	20	25	32	40	55	62	80	100	125	155
Y	85	100	110	125	145	160	180	210	240	295
b	16	18	18	20	20	20	22	22	24	24
f	2	2	2	2	2	2	2	2	2	2
n-φd	4-φ14	4-φ18	4-φ18	4-φ18	8-φ18	8-φ18	8-φ18	8-φ18	8-φ22	12-φ22
L	102	102	114	124	145	165	194	194	229	243
H	81	86	90	93	108	123	138	128	170	200
H1	178	183	185	195	210	223	235	250	270	320

主要外形及连接法兰尺寸-150 Class Main Outline and Connecting Flange Size- 150 Class

MEDLE	DN25	DN32	DN40	DN50	DN65	DN80	DN100	DN125	DN150	DN200
Inch	1"	1-1/4"	1-1/2"	2"	2-1/2"	3"	4"	5"	6"	8"
A	108	115	127	152	180	191	230	255	280	340
B	50.8	63.5	73	92.1	104.8	127	157.2	185.7	215.9	269.9
C	79.4	88.9	98.4	120.7	139.7	152.4	190.5	215.9	241.3	298.5
G	20	25	32	40	55	62	80	100	125	155
Y	85	100	110	125	145	160	180	210	240	295
b	16	18	18	20	20	20	22	22	24	24
f	2	2	2	2	2	2	2	2	2	2
n-φd	8-φ14	8-φ18	8-φ18	8-φ18	8-φ18	8-φ18	8-φ18	8-φ18	8-φ22	12-φ22
L	102	102	114	124	145	165	194	194	229	243
H	81	86	90	93	108	123	138	128	170	200
H1	178	183	185	195	210	223	235	250	270	320

气动三通螺纹球阀

VP11-T3 VINCER PNEUMATIC THREADED 3-WAY BALL VALVE

气动三通螺纹球阀可实现多种流体控制方式，适用于多路流体分流或合流的场合，为你提供可靠的操作性能。

Pneumatic three-way threaded ball valve can realize a variety of fluid control methods and is suitable for situations where multiple fluids divide or merge, providing you with reliable operating performance.



技术规范 Technical Parameter

- 设计标准 Design Standard: GB/T 12237
- 试验和检验 Test & Inspection: GB/T 26480

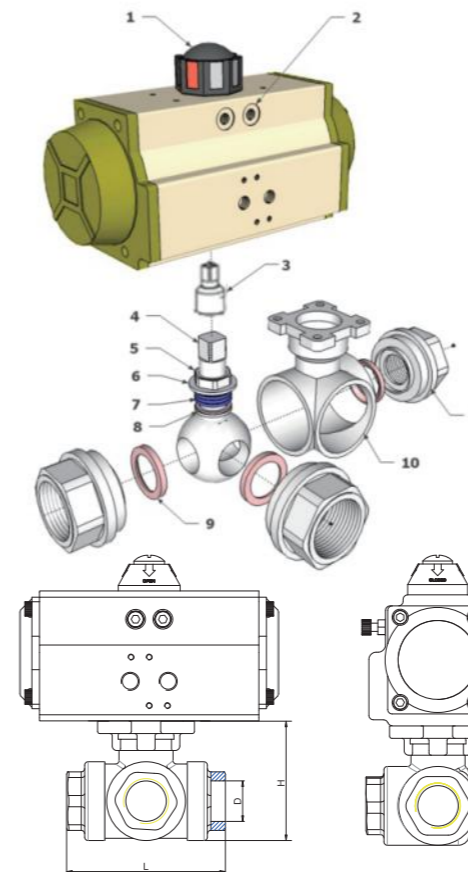
优势 Advantage

多功能性，耐腐蚀性，高效节能

Versatility, Corrosion resistance, Energy efficiency

主要零件材质表 Main Parts Materials

序号 No.	零件名称 Component	材质 Material
1	位置指示器 Location Indicator	塑料 Plastic
2	气动执行器 Pneumatic Actuator	AT Series
3	连接套 Connecting Set	不锈钢304 Stainless Steel 304
4	阀杆 Stem	不锈钢304、304L、316、316L Stainless Steel 304、304、316、316L
5	螺栓 Screw	不锈钢304、316L Stainless Steel 304、316L
6	压盖 Gland	不锈钢304、316L Stainless Steel 304、316L
7	填料 Packing	聚四氟乙烯(PTFE)
8	球体 Ball	不锈钢304、304L、316、316L Stainless Steel 304、304L、316、316L
9	阀座 Seat	PTFE、对位聚苯(PPL) 硬质合金(H/Y)
10	主阀体 Body	不锈钢CF8、CF8M、CF3、CF3M Stainless Steel CF8、CF8M、CF3、CF3M
11	分阀体 Body	不锈钢CF8、CF8M、CF3、CF3M Stainless Steel CF8、CF8M、CF3、CF3M



主要外形及连接尺寸 Main Outline and Connecting

MEDLE	DN08	DN10	DN15	DN20	DN25	DN32	DN40	DN50	DN65
G	1/4"	3/8"	1/2"	3/4"	1"	1-1/4"	1-1/2"	2"	2-1/2"
D	10	12	12	15	20	25	32	38	48.5
L	71	71	74	88	92	124	138	154	180
H	56	56	58	60	70	82	95	100	180

气动三片式焊接球阀

VP11-P3 VINCER PNEUMATIC 3-PIECE WELDED BALL VALVE

气动焊接球阀采用焊接结构，可实现安全、防漏连接。它具有出色的耐用性、可靠性，深受高压工业应用的青睐。

The pneumatic welded ball valve boasts a welded construction for secure, leak-proof connections. It excels in durability, reliability, and is favored for high-pressure industrial applications.

技术规范 Technical Parameter

- 设计标准 Design Standard: GB/T 12237
- 试验和检验 Test & Inspection: GB/T 26480

优势 Advantage

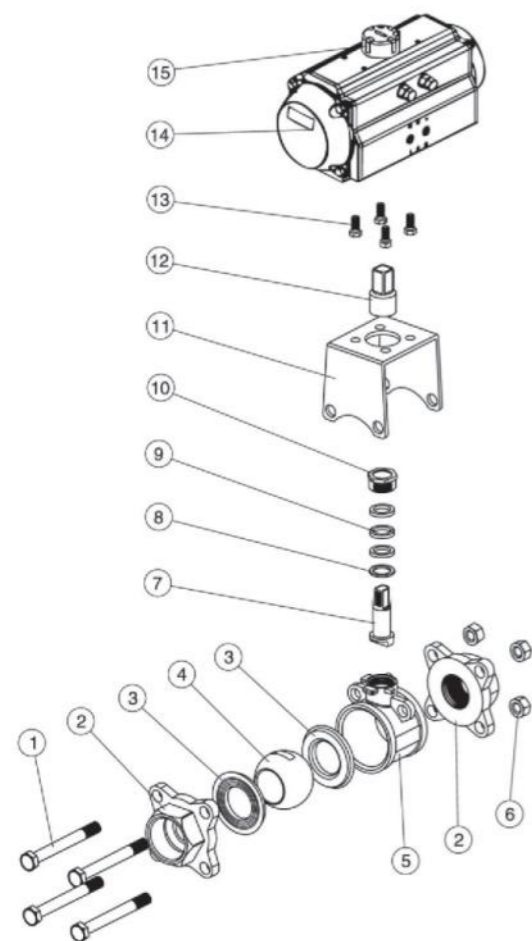
高密封性，方便维护，耐腐蚀

High sealing, Easy maintenance, Corrosion resistance



主要零件材质表 Main Parts Materials

序号 No.	零件名称 Component	材质 Material
1	螺栓 Screw	不锈钢304 Stainless Steel 304
2	接头 Connector	不锈钢CF8、CF8M、CF3、CF3M Stainless Steel CF8, CF8M, CF3, CF3M
3	阀座 Seat	PTFE、对位聚苯(PPL) 硬质合金(H/Y)
4	球体 Ball	不锈钢304、304L、316、316L Stainless Steel 304, 304L, 316, 316L
5	阀体 Body	不锈钢CF8、CF8M、CF3、CF3M Stainless Steel CF8, CF8M, CF3, CF3M
6	螺母 Nut	不锈钢304 Stainless Steel 304
7	阀杆 Stem	不锈钢304、304L、316、316L Stainless Steel 304, 304, 316, 316L
8	垫片 Gasket	不锈钢304、316L Stainless Steel 304, 316L
9	填料 Packing	PTFE
10	压盖 Gland	不锈钢304、316L Stainless Steel 304, 316L
11	连接支架 Connecting Yoke	不锈钢CF8 Stainless Steel CF8
12	连接套 Connecting Set	不锈钢304 Stainless Steel 304
13	螺栓 Screw	不锈钢304 Stainless Steel 304
14	气动执行器 Pneumatic Actuator	AT Series
15	位置指示器 Location Indicator	塑料 Plastic



气动蝶阀

Pneumatic Butterfly Valves



气动对夹蝶阀

VP12 VINCER Pneumatic Wafer Butterfly Valve



气动法兰蝶阀

VP12-F VINCER Pneumatic Flanged Butterfly Valve



气动塑料蝶阀

VP12-P VINCER Pneumatic Plastic Butterfly Valve



气动卫生级蝶阀

VP12-K VINCER Pneumatic Sanitary Butterfly Valve



气动PTFE衬氟蝶阀

VP12-PTFE VINCER Pneumatic PTFE-Lined Butterfly Valve



气动硬密封蝶阀

VP12-HA Pneumatic Hard-Seat Butterfly Valve

伟赛尔气动蝶阀

PNEUMATIC BUTTERFLY VALVES

气动对夹蝶阀

VP12 VINCER PNEUMATIC WAFER BUTTERFLY VALVE

气动对夹蝶阀采用对夹连接方式，适用于中低压流体控制，具有快速开闭、结构简单、维护方便等优势。

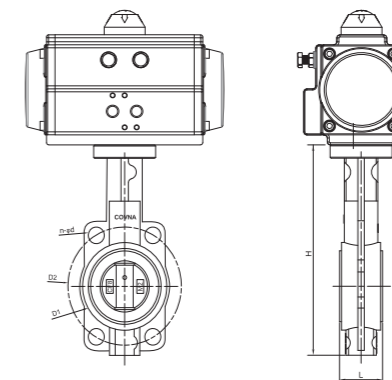
Pneumatic wafer butterfly valve adopts wafer connection method and is suitable for medium and low pressure fluid control. It has the advantages of fast opening and closing, simple structure and easy maintenance.

技术规范 Technical Parameter

- 设计标准 Design Standard: GB/T 12238、JB/T 79、HG/T 20592
- 结构长度 Face to Face Dimension/对夹连接 Wafer Connecting: GB、JIS、ANSI
- 试验和检验 Test & Inspection: GB/T 13927

优势 Advantage

高密封性，方便维护，耐腐蚀
High sealing, Easy maintenance, Corrosion resistance

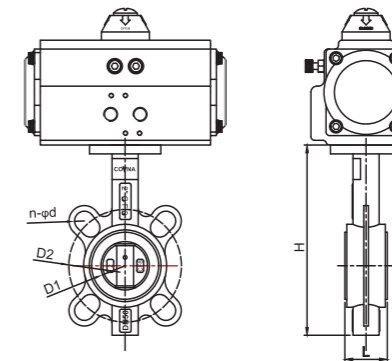
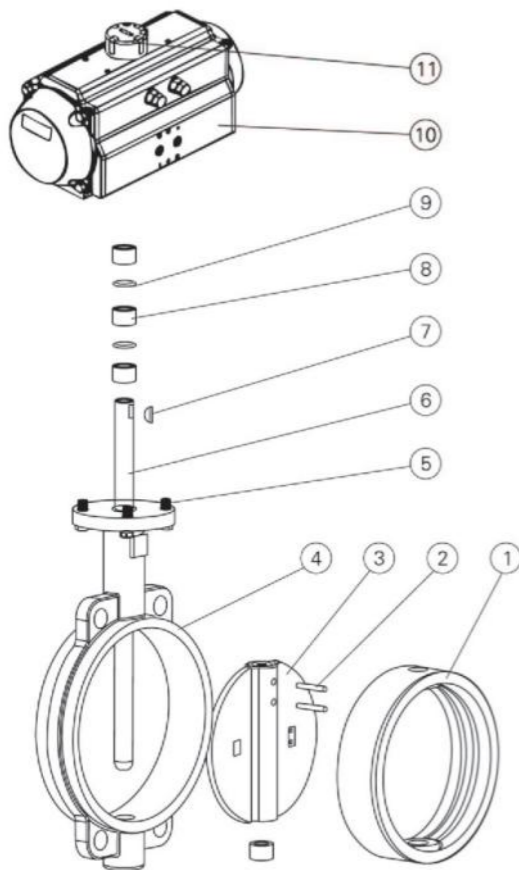


主要外形及连接尺寸PN10, PN16(10MPa, 16MPa)
Main Outline and Connecting Size- PN10, PN16(1.0MPa,1.6MPa)

MEDLE	DN50	DN65	DN80	DN100	DN125	DN150	DN200	DN250	DN300	DN350	DN400	DN500	DN600
Inch	2"	2-1/2"	3"	4"	5"	6"	8"	10"	12"	14"	16"	20"	24"
D	50	65	80	100	125	150	200	250	300	350	400	500	600
D1	96	104	127	153	180	206	270	320	368	428	482	605	
D2	125	145	160	180	210	240	295	355	410	470	525	650	725
L	45	47	48	58	59	59	64	70	78	80	108	120	152
H	212	225	256	280	315	345	405	480	554				
n-φd	4-φ18	4-φ18	4-φ18	4-φ18	4-φ18	4-φ23	4-φ23	4-φ23	4-φ26	4-φ26	4-φ26	4-φ30	4-φ36

主要零件材质表 Main Parts Materials

序号 No.	零件名称 Component	材质 Material		
		Z	C	P
1	阀座 Seat	橡胶, 聚四氟乙烯 Rubber, PTFE		
2	圆锥销 Taper Pin	45钢 45 Steel	45钢 45 Steel	不锈钢 Stainless Steel
3	蝶板 Butterfly Plate	球墨铸铁镀铬 Ductile Iron-iron Hard Chrome Plating	碳钢或不锈钢 Simple Steel or Stainless Steel	不锈钢 Stainless Steel
4	阀体 Body	灰铸铁 Grey Cast Iron	碳钢 Carbon Steel	不锈钢 Stainless Steel
5	螺栓 Screw	35钢 35 Steel	碳钢 Carbon Steel	不锈钢 Stainless Steel
6	阀杆 Stem	45钢 45 Steel	不锈钢 Stainless Steel	不锈钢 Stainless Steel
7	键 Key	45钢 45 Steel	45钢 45 Steel	不锈钢 Stainless Steel
8	衬套 Bushing	铜基粉末冶金 Copper Base Powder Metallurgy	铜基粉末冶金 Copper Base Powder Metallurgy	铜基粉末冶金 Copper Base Powder Metallurgy
9	O型圈 O Ring	橡胶 Rubber, 氟橡胶 Viton		
10	气动装置 Pneumatic Device	AT Series AW Series		
11	位置指示器 Location Indicator	塑料 Plastic		



主要外形及连接尺寸PN10, PN16(1.0MPa,1.6MPa)
Main Outline and Connecting Size- PN10, PN16(1.0MPa,1.6MPa)

MEDLE	DN50	DN65	DN80	DN100	DN125	DN150	DN200	DN250	DN300	DN350	DN400	DN500
Inch	2"	2-1/2"	3"	4"	5"	6"	8"	10"	12"	14"	16"	20"
D	52.7	64.4	78.8	104.2	123.3	157	202.5	250.5	301.6	333.3	389.6	491.6
D1	89	104	127	153	180	206	270	320	368	428	482	605
D2	125	145	160	180	210	240	295	355	410	470	525	585
L	41	43	45	50	54	54	60	66	75.5	86.5	86.5	131.8
H	207	219	232	262	265	296	353	390	460	508	597	677
n-φd	4-φ18	4-φ18	4-φ18	4-φ18	4-φ18	4-φ23	4-φ23	4-φ23	4-φ26	4-φ26	4-φ26	4-φ30

气动法兰蝶阀

VP12-F VINCER PNEUMATIC FLANGED BUTTERFLY VALVE

气动法兰蝶阀适用于管道法兰连接，具有结构紧凑、操作可靠、密封性能优异等特点，广泛应用于化工、冶金、电力等领域。

Pneumatic flanged butterfly valve is suitable for pipeline flange connection. It has the characteristics of compact structure, reliable operation and excellent sealing performance. It is widely used in chemical industry, metallurgy, electric power and other fields.

技术规范 Technical Parameter

- 标准 Standard: GB、DIN、ANSI、JIS

优势 Advantage

通用性强，耐高温，可靠的密封性能

Strong versatility, High temperature resistance, Reliable sealing performance



阀体材质: 铸铁、碳钢(WCB)、不锈钢(CF8、CF8M)

阀板材质: 铸铁、不锈钢

阀座材料: 橡胶(X)、聚四氟乙烯(F)

作用方式: 双作用、单作用(弹簧复位)

附件选择: 电磁阀、定位器、限位开关、气源处理三联件、手动机构

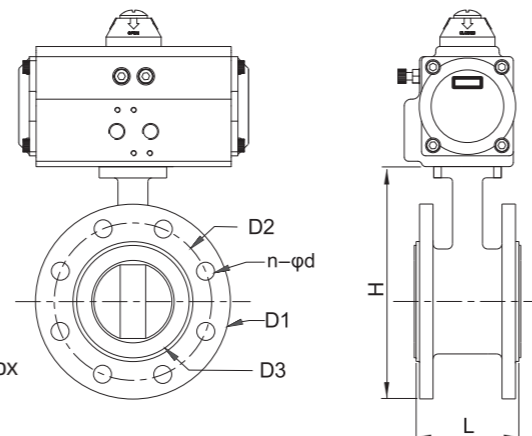
Body Material: Cast Iron, Carbon Steel(WCB), Stainless Steel(CF8, CF8M)

Disc Material: Cast Iron/Stainless Steel

Seat Material: Rubber, PTFE

Mode of Action: Double-Acting/Single-Acting(Spring Return)

Optional Accessories: Solenoid Valve, Positioner, Limit Switch, F.R.L, Gear box



主要外形及连接尺寸 PN10, PN16(1.0MPa/1.6MPa)

Main Outline and Connecting Size- PN10, PN16(1.0MPa,1.6MPa)

MEDLE	DN50	DN65	DN80	DN100	DN125	DN150	DN200	DN250	DN300	DN350	DN400	DN500
Inch	2"	2-1/2"	3"	4"	5"	6"	8"	10"	12"	14"	16"	20"
D	52.7	64.4	83	104.2	123.3	157	202.5	250.5	301.6	333.3	389.6	491.6
D1	165	185	200	220	250	285	340	395	445	505	565	670
D2	125	145	160	180	210	240	295	355	410	470	525	620
D3	99	118	132	156	184	211	266	319	370	429	480	582
L	108	112	114	127	140	140	150	165	185	195	216	229
H	192	207	224	255	290	325	386	460	510	565	632	759
n-φd	4-φ18	4-φ18	8-φ18	8-φ18	8-φ18	8-φ22	8-φ22	12-φ22	12-φ22	16-φ22	16-φ26	20-φ26

气动塑料蝶阀

VP12-P VINCER PNEUMATIC PLASTIC BUTTERFLY VALVE

气动塑料蝶阀采用塑料材质制造，具有良好的耐腐蚀性能，广泛应用于废水、环保等行业。

Pneumatic plastic butterfly valves are made of plastic material and have good corrosion resistance. They are widely used in wastewater, environmental protection and other industries.

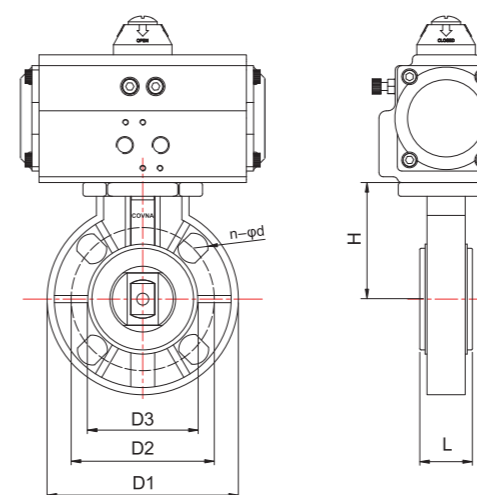
技术规范 Technical Parameter

- 标准 Standard: GB、DIN、ANSI、JIS

优势 Advantage

轻质耐腐蚀，低噪音，耐磨损

Corrosion-resistant, Low noise, Wear-resistant



主要零件材质表 Main Parts Materials

序号 No.	零件名称 Component	材质 Material
1	主阀体 Body	PVC UPVC CPVC PPH PVDF
2	阀板 Ball	PVC UPVC CPVC PPH PVDF
3	阀座 Seat	EPDM FPM
4	O型环 O-Ring	EPDM FPM
5	阀杆 Stem	不锈钢304、316 Stainless Steel 304, 316
6	连接套 Connecting Set	不锈钢304、316 Stainless Steel 304, 316
7	Screw 螺栓	不锈钢304、316 Stainless Steel 304, 316
8	气动执行器 Pneumatic Actuator	AT Series
9	位置指示器 Location Indicator	塑料 Plastic

主要外形及连接尺寸PN10(1.0MPa)

Main Outline and Connecting Size PN10(1.0MPa)

MEDLE	DN50	DN65	DN80	DN100	DN125	DN150	DN200	DN250	DN300
Inch	2"	2-1/2"	3"	4"	5"	6"	8"	10"	12"
D	52.7	64.4	83	104.2	123.3	157	202.5	250.5	300
D1	160	180	195	226	255	280	340	410	470
D2	120	140	155	178	200	230	285	345	400
D3	84	100	120	141	167	190	245	292	
L	44	43	47	52	63	68	80	90	105
H	99	108	131	156	168	182	230	261	305
n-φd	4-φ18	4-φ18	8-φ18	8-φ18	8-φ18	8-φ22	8-φ22	12-φ22	12-φ22

气动卫生级卡箍蝶阀

VP12-K VINCER PNEUMATIC SANITARY BUTTERFLY VALVE

气动卫生级卡箍蝶阀采用卡箍连接方式，结构符合卫生要求，适用于食品饮料、制药、生物工程等领域。

Pneumatic sanitary clamp butterfly valve adopts clamp connection method, and its structure meets sanitary requirements. It is suitable for food and beverage, pharmaceutical, bioengineering and other fields.

技术规范 Technical Parameter

- 设计标准 Design Standard: GB/T 12238-1989
- 试验和检验 Test & Inspection: JB/T 9092

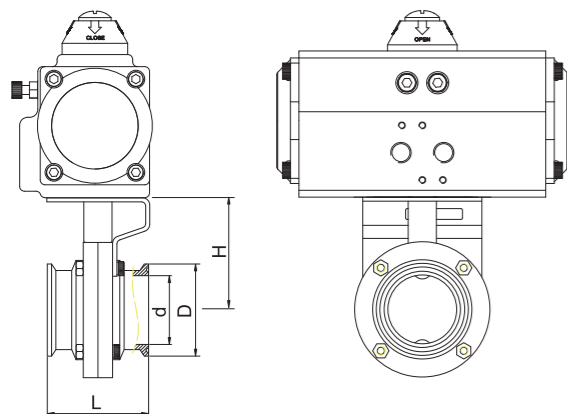
优势 Advantage

卫生级设计，易清洁维护，采用优质材质
Hygienic design, Easy to clean and maintain,
Made of high-quality materials



主要零件材质表 Main Parts Materials

序号 No.	零件名称 Component	材质 Material
1	位置指示器 Location Indicator	塑料 Plastic
2	气动执行器 Pneumatic Actuator	AT Series
3	连接套 Connecting Set	不锈钢304 Stainless Steel 304
4	阀杆 Stem	不锈钢304、304L、316、316L Stainless Steel 304、304L、316、316L
5	螺栓 Screw	不锈钢304、316L Stainless Steel 304、316L
6	螺母 Nut	不锈钢304、316L Stainless Steel 304、316L
7	填料 Packing	PTFE
8	连接支架 Connecting Yoke	不锈钢304、304L、316、316L Stainless Steel 304、304L、316、316L
9	蝶板 Disc	不锈钢304、304L、316、316L Stainless Steel 304、304L、316、316L
10	阀座 Seat	三元乙丙橡胶、硅胶、定制高温 EPDM、SIL、High temperature glue
11	左阀体 Left Body	不锈钢CF8、CF8M、CF3、CF3M Stainless Steel CF8、CF8M、CF3、CF3M
12	右阀体 Right Body	不锈钢CF8、CF8M、CF3、CF3M Stainless Steel CF8、CF8M、CF3、CF3M



主要外形及连接尺寸(卡箍连接)

Main Outline and Connecting of clamp connection type

Size	3/4"	1"	1-1/4"	1-1/2"	1-3/4"	2"	2-1/4"	2-1/2"	3"	3-1/2"	4"
	Ø19	Ø25	Ø32	Ø38	Ø45	Ø51	Ø57	Ø63	Ø76	Ø89	Ø102
d	16.1	22.4	28.8	35.1	42	47.8	53	59.5	72.2	85	97.6
D	25.4	50.5	50.5	50.5	64	64	77.5	77.5	91	106	119
L	66	66	66	70	74	76	78	80	84	90	104

气动PTFE衬氟蝶阀

VP12-PTFE VINCER PNEUMATIC PTFE-LINED BUTTERFLY VALVE

气动衬氟蝶阀采用氟塑料衬里，具有优异的耐腐蚀性能，适用于腐蚀性介质的流体控制，广泛应用于化工、制药、电力等领域。

Pneumatic fluorine-lined butterfly valves are lined with fluorine plastic and have excellent corrosion resistance. They are suitable for fluid control of corrosive media and are widely used in chemical industry, pharmaceuticals, electric power and other fields.

技术规范 Technical Parameter

- 标准 Standard: GB、DIN、ANSI、JIS

优势 Advantage

耐腐蚀，良好的密封性能，适用范围广

Corrosion resistance, Good sealing performance, Wide application range



阀体材质:铸铁、碳钢(WCB)、不锈钢(CF8、CF8M)

阀板材质:铸铁+聚四氟乙烯(F)

阀座材料:聚四氟乙烯(F)

作用方式:双作用、单作用(弹簧复位)

附件选择:电磁阀、定位器、限位开关、气源处理三联件、手动机构

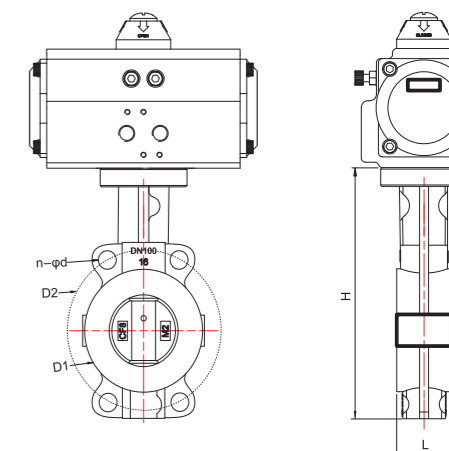
Body Material: Cast Iron, Carbon Steel(WCB), Stainless Steel(CF8, CF8M)

Seat Material: Cast Iron+PTFE

Seat Material: PTFE

Mode of Action: Double-Acting/Single-Acting(Spring Return)

Optional Accessories: Solenoid Valve, Positioner, Limit Switch, F.R.L., Gear box

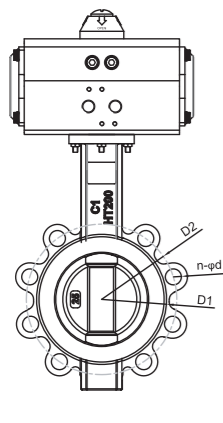


对夹式 Wafer Type

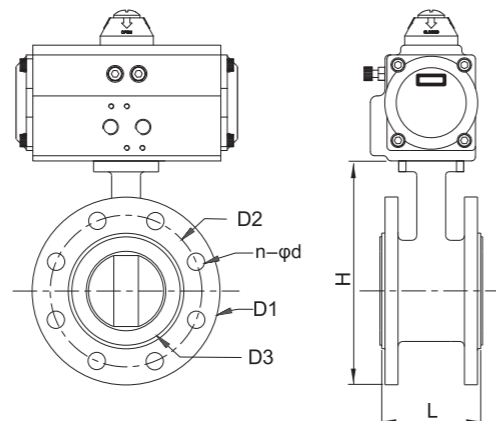
主要外形及连接尺寸PN10(1.0MPa)

Main Outline and Connecting Size of Wafer Type- PN10(1.0MPa)

MEDLE	DN50	DN65	DN80	DN100	DN125	DN150	DN200	DN250	DN300	DN350	DN400	DN500
Inch	2"	2-1/2"	3"	4"	5"	6"	8"	10"	12"	14"	16"	20"
D	50	65	80	100	125	150	200	250	300	350	400	500
D1	96	104	127	153	180	206	270	320	368	428	482	605
D2	125	145	160	180	210	240	295	355	410	470	525	585
L	43	46	46	52	56	56	60	68	78	78	102	127
H	212	230	233	270	298	337	407	480	555	610	715	870
n-φd	4-φ18	4-φ18	4-φ18	4-φ18	4-φ18	4-φ23	4-φ23	4-φ23	4-φ23	4-φ23	4-φ25	4-φ25



凸耳式 Lug Type



法兰式 Flange Type

凸耳式主要外形及连接尺寸(1.0MPa)

Lug Type Main Outline and Connecting Size-10bar(1.0MPa)

MEDLE	DN50	DN65	DN80	DN100	DN125	DN150	DN200	DN250	DN300	DN350	DN400	DN500
Inch	2"	2-1/2"	3"	4"	5"	6"	8"	10"	12"	14"	16"	20"
D	52.7	64.4	78.8	104.2	123.3	157	202.5	250.5	301.6	333.3	389.6	491.6
D1	89	104	127	153	180	206	270	320	368	428	482	605
D2	125	145	160	180	210	240	295	355	410	470	525	585
L	41.4	44	45	52	54	54	55	60	65	76	86	130
H	217	234	252	289	318	341	428	490	567			
n-φd	4-M16	4-M16	8-M16	8-M16	8-M16	8-M20	12-M20	12-M24	12-M24			

法兰连接主要外形及连接尺寸PN10(1.0MPa)

Flange Type Main Outline and Connecting Size- PN10(1.0MPa)

MEDLE	DN50	DN65	DN80	DN100	DN125	DN150	DN200	DN250	DN300	DN350	DN400	DN500
Inch	2"	2-1/2"	3"	4"	5"	6"	8"	10"	12"	14"	16"	20"
D	50	65	80	100	125	150	200	250	300	350	400	500
D1	165	185	200	220	250	285	340	395	445	505	565	670
D2	125	145	160	180	210	240	295	355	410	470	525	585
D3	96	104	127	153	180	206	270	320	368	428	482	605
L	108	112	114	127	140	140	152	165	178	190	216	229
H	212	230	233	270	298	337	407	480	555	610	715	870
n-φd	4-φ18	4-φ18	8-φ18	8-φ18	8-φ18	8-φ23	8-φ23	12-φ23	12-φ23	16-φ23	16-φ25	20-φ25

气动硬密封蝶阀

VP12-HA PNEUMATIC HARD-SEAT BUTTERFLY VALVE

气动硬密封蝶阀采用金属密封结构，具有耐高温、耐高压、耐磨损等特点，适用于高温高压介质的流体控制。

Pneumatic hard-seated butterfly valve adopts metal sealing structure and has the characteristics of high temperature resistance, high pressure resistance and wear resistance. It is suitable for fluid control of high temperature and high pressure media.

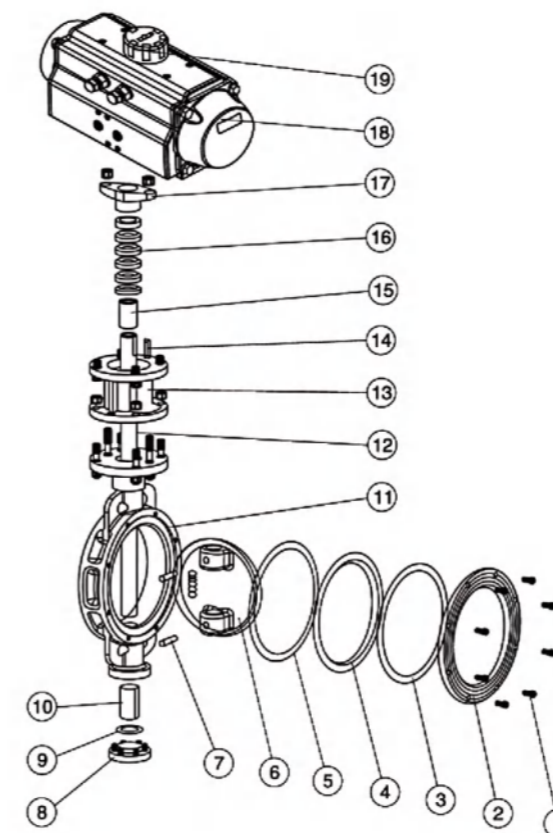
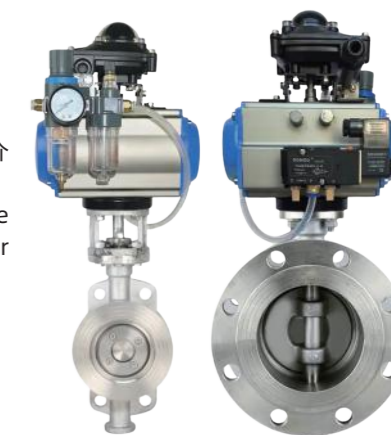
技术规范 Technical Parameter

- 设计标准 Design Standard: GB/T 12238、API 609
- 结构长度 Face To Face Dimension: GB/T 12221、ASME B16.10
- 连接法兰尺寸 Connecting Flange Size: GB/T 9113、JB/T 79、ANSI B16.5(2-24")、ANSI B16.47(26-32")
- 试验和检验 Test & Inspection: JB/T 9092、API598

优势 Advantage

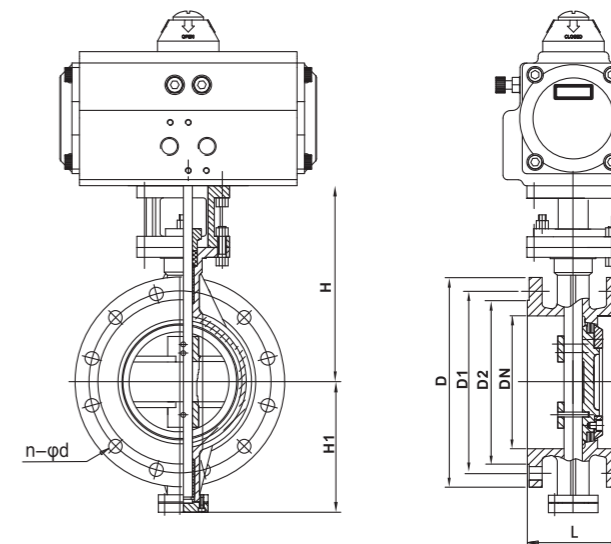
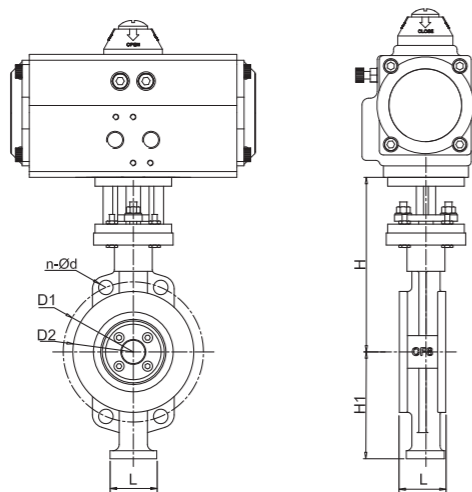
耐高温，耐高压，耐磨损

High temperature resistance, High pressure resistance, Wear resistance



主要零件材质表 Main Parts Materials

序号 No.	零件名称 Component	材质 Material		
		C	P	R
1	内六角螺钉 Inner Hexagon Screw	3.6	3.6	3.6
2	阀盖 Bonnet	WCB	3.6	304
3	垫片 Gasket	3.6	3.6	3.6
4	阀座 Seat	不锈钢+柔性石墨 PTFE Stainless Steel+Graphite PTFE		
5	垫片 Gasket	3.6	3.6	3.6
6	蝶板 Butterfly Plate	WCB	304	304
7	圆柱销 Straight Pin	45	3.6	3.6
8	下盖 Bottom Cover	WCB	304	304
9	垫片 Gasket	不锈钢+柔性石墨 PTFE Stainless Steel+Graphite PTFE		
10	衬套 Bushing	PTFE复合轴承 Composite bearings		
11	阀体 Body	WCB	304	304
12	阀杆 Stem	3.6	3.6	304
13	支架 Yoke	WCB	WCB	WCB
14	键 Key	45	45	45
15	衬套 Bushing	PTFE复合轴承 Composite Bearings		
16	填料 Packing	柔性石墨 PTFE Graphite PTFE		
17	压盖 Gland	WCB	304	304
18	气动执行器 Pneumatic Actuator	AT Series AW Series		
19	位置指示器 Location Indicator	塑料 Plastic		



主要外形及连接尺寸GB-PN16(1.6MPa)
Main Outline and Connecting Size of GB-PN16(1.6MPa)

MEDLE	DN80	DN100	DN125	DN150	DN200	DN250	DN300	DN350	DN400	DN450	DN500
Inch	3"	4"	5"	6"	8"	10"	12"	14"	16"	18"	20"
D	83	104.2	123.3	157	202.5	250.5	301.6	333.3	389.6	449.5	491.6
D1	160	180	210	240	295	355	410	410	525	585	620
D2	132	156	184	211	266	319	370	429	480	548	582
L	49	56	64	70	71	76	83	83	102	114	127
H	260	298	315	325	380	435	475	475	580	620	660
H1	114	128	148	170	188	235	265	265	335	380	410
n-φd	4-φ18	8-φ18	8-φ18	8-φ22	12-φ23	12-φ26	12-φ26	12-φ26	16-φ30	20-φ30	20-φ33

主要外形及连接尺寸
Main Outline and Connecting Size

DN	Inch	L	1.6 MPa				2.5 MPa				150LB				300LB				High	
			D	D1	D2	Z-φd	D	D1	D2	Z-φd	D	D1	D2	Z-φd	D	D1	D2	Z-φd	H	H1
50	2"	108	165	125	102	4-φ18	165	125	102	4-φ18	150	120.7	92	4-φ19	165	127	92	8-φ19	130	96
65	2-1/2"	112	185	145	122	4/8-φ18	185	145	122	8-φ18	180	137.7	105	4-φ19	190	149.2	105	8-φ22	145	97
80	3"	114	200	160	138	8-φ18	200	160	138	8-φ18	190	152.4	127	4-φ19	210	168.3	127	8-φ22	167	108
100	4"	127	220	180	158	8-φ18	235	190	162	8-φ22	230	190.5	157	8-φ19	255	200	157	8-φ22	195	128
125	5"	140	250	210	188	8-φ18	270	220	188	8-φ26	255	215.9	186	8-φ22	280	235	186	8-φ22	240	145
150	6"	140	285	240	212	8-φ22	300	250	218	8-φ26	280	241.3	216	8-φ22	320	269.9	216	12-φ22	260	168
200	8"	152	340	295	268	12-φ22	360	310	278	12-φ26	345	298.5	270	8-φ22	380	330.2	270	12-φ26	290	190
250	10"	165	405	355	320	12-φ26	425	370	335	12-φ30	405	362	324	12-φ26	445	387.4	324	16-φ29	310	235
300	12"	178	460	410	378	16-φ26	485	430	305	16-φ30	485	431.8	381	12-φ26	520	450.8	381	16-φ32	380	266
350	14"	190	520	470	438	16-φ26	555	490	450	16-φ33	535	476.3	413	12-φ29	585	514.4	413	20-φ32	435	300
400	16"	216	580	525	490	16-φ30	620	550	505	16-φ36	595	539.8	470	16-φ29	650	571.5	470	20-φ35	460	330
450	18"	222	640	585	550	20-φ30	670	600	555	20-φ36	635	577.9	533	16-φ32	710	628.6	533	24-φ35	485	355
500	20"	229	715	650	610	20-φ33	730	660	615	20-φ36	700	635	584	20-φ32	775	685.8	584	24-φ35	520	385
600	24"	267	840	770	725	20-φ36	845	770	720	20-φ39	815	749.3	692	20-φ35	915	812.8	692	24-φ42	610	455
700	28"	292	910	840	795	24-φ36	960	875	820	24-φ42	925	863.6	800	28-φ35	1035	939.8	800	28-φ45	675	505

主要外形及连接尺寸ANSI-Class 150
Main Outline and Connecting Size of ANSI-Class 150

MEDLE	DN80	DN100	DN125	DN150	DN200	DN250	DN300	DN350	DN400	DN450	DN500
Inch	3"	4"	5"	6"	8"	10"	12"	14"	16"	18"	20"
D	83	104.2	123.3	157	202.5	250.5	301.6	333.3	389.6	449.5	491.6
D1	152.4	190.5	215.9	241.3	298.5	362	431.8	476.3	539.8	577.9	635
D2	132	156	184	211	266	319	370	429	480	548	582
L	49	56	64	70	71	76	83	83	102	114	127
H	260	298	315	325	380	435	475	475	580	620	660
H1	114	128	148	170	188	235	265	265	335	380	410
n-φd	4-φ18	8-φ18	8-φ18	8-φ22	12-φ23	12-φ26	12-φ26	12-φ26	16-φ30	20-φ30	20-φ33

气动凸耳蝶阀

VP12-LUG VINCER PNEUMATIC LUGGED BUTTERFLY VALVE

气动凸耳蝶阀具有凸耳连接结构，适用于大口径管道和高流量的流体控制，具有快速开闭、流体阻力小等优势。

Pneumatic lugged butterfly valve has a lug connection structure and is suitable for large-diameter pipelines and high-flow fluid control. It has the advantages of rapid opening and closing and low fluid resistance.

技术规范 Technical Parameter

- 标准 Standard: GB、DIN、ANSI、JIS

优势 Advantage

快速开闭，低流体阻力，大口径适用

Quick opening and closing, Low fluid resistance, Suitable for large diameters

阀体材质: 铸铁、碳钢(WCB)、不锈钢(CF8、CF8M)

阀板材质: 铸铁、不锈钢

阀座材料: 橡胶(X)、聚四氟乙烯(F)

作用方式: 双作用、单作用(弹簧复位)

附件选择: 电磁阀、定位器、限位开关、气源处理三联件、手动机构

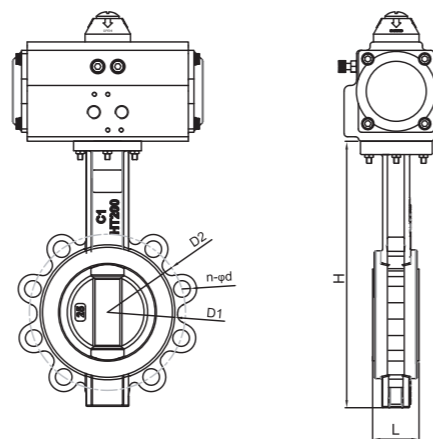
Body Material: Cast Iron, Carbon Steel(WCB), Stainless Steel(CF8, CF8M)

Disc Material: Cast Iron/ Stainless Steel

Seat Material: Rubber, PTFE

Mode of Action: Double-Acting/Single-Acting(Spring Return)

Optional Accessories: Solenoid Valve, Positioner, Limit Switch, F.R.L, Gear box



主要外形及连接尺寸 PN10, PN16(1.0MPa/1.6MPa)

Main Outline and Connecting Size- PN10, PN16(1.0MPa,1.6MPa)

MEDLE	DN50	DN65	DN80	DN100	DN125	DN150	DN200	DN250	DN300	DN350	DN400	DN500
Inch	2"	2-1/2"	3"	4"	5"	6"	8"	10"	12"	14"	16"	20"
D	52.7	64.4	78.8	104.2	123.3	157	202.5	250.5	301.6	333.3	389.6	491.6
D1	89	104	127	153	180	206	270	320	368	428	482	605
D2	125	145	160	180	210	240	295	355	410	470	525	585
L	41.4	44	45	52	54	54	55	60	65	76	86	130
H	217	234	252	289	318	341	428	490	567			
n-φd	4-M16	4-M16	8-M16	8-M16	8-M16	8-M20	12-M20	12-M24	12-M24			

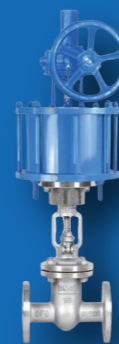
气动直行程阀门

Linear Actuator Valves



气动刀闸阀

VP13-PKG VINCER Pneumatic Knife Gate valve



气动闸阀

VP13-PGA VINCER Pneumatic Gate Valve



气动截止阀

VP13-PGO VINCER Pneumatic Globe Valve

伟赛尔气动直行程阀门

LINEAR ACTUATOR VALVES

气动刀闸阀

VP13-PKG VINCER PNEUMATIC KNIFE GATE VALVE

气动刀闸阀适用于管道切断流体介质，具有结构简单、流体阻力小、密封可靠等优势。广泛应用于污水处理、排污系统等领域。

Pneumatic knife gate valve is suitable for cutting off fluid media in pipelines. It has the advantages of simple structure, small fluid resistance, and reliable sealing. Widely used in sewage treatment, sewage systems and other fields.

优势 Advantage

结构简单，流体阻力小，可靠的密封性能
Simple structure, Small fluid resistance,
Reliable sealing performance



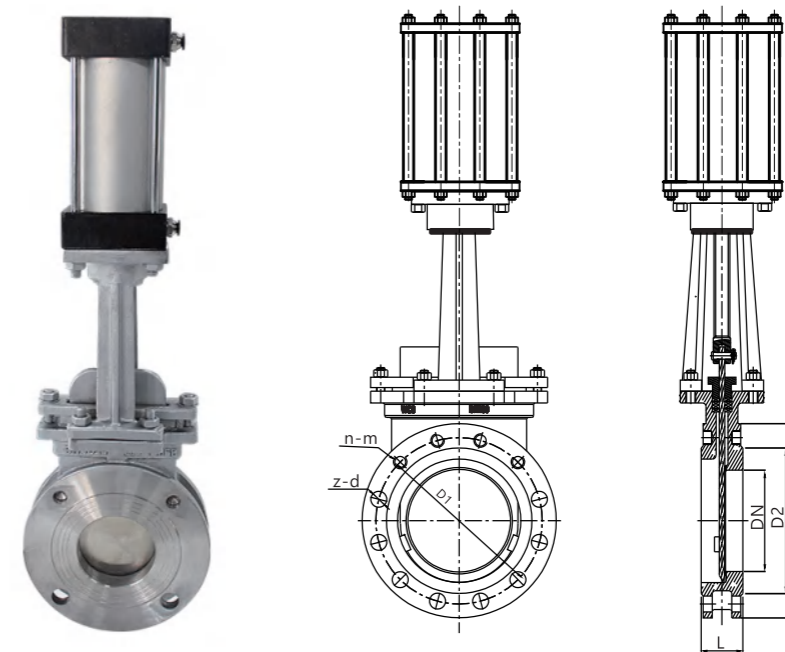
法兰型
Flange type



梅花型
Lug type



对夹型
Wafer type



主要外形及连接尺寸(1.0MPa) Main Outline and Connecting(1.0MPa)

Size	2"	2-1/2"	3"	4"	5"	6"	8"	10"	12"	14"	16"	18"	20"
DN	50	65	80	100	125	150	200	250	300	350	400	450	500
D	160	180	195	215	245	280	335	390	440	500	565	615	670
D1	125	145	160	180	210	240	295	350	400	460	515	565	620
D2	100	120	135	155	185	210	265	320	368	428	482	532	585
b	18	18	18	18	18	23	23	23	23	23	27	27	27
L	50	50	50	50	50	60	60	70	80	90	100	110	114
z-d	2-18	2-18	2-18	6-18	6-22	6-22	6-22	8-26	8-26	8-30	10-30	10-30	10-30
n-m	2-M16	2-M16	2-M16	2-M16	2-M20	2-20	2-M20	4-M24	4-M24	4-M27	6-M27	6-M27	6-M27

主要零件材质表 Main Parts Materials

NO.	零件名称 Part Name	零件材料 Part Material
1	公称通径 Nominal Size	DN50~DN1000
2	适用介质 Applicable Medium	泥浆、物料、粘稠、颗粒类流体 Mud, material, viscous, granular fluid
3	连接类型 Connection Type	法兰型, 梅花型, 对夹型 Flanged Type, Plum blossom type, Wafer type
4	压力等级 Pressure Rating	0.6 1.6 4.0 6.4 (ANSI 150 300 600Lb) (JIS10 20 30 40K)
5	工作温度 Operating temperature	-30°C ~300°C
6	阀体材质 Body Material	WCB、铸铁、不锈钢(CF8、CF8M) Cast Iron, Carbon Steel(WCB), Stainless Steel(CF8, CF8M)
7	阀板材质 Disc Material	WCB、铸铁、不锈钢(CF8、CF8M) WCB、Cast Iron, Stainless Steel(CF8, CF8M)
8	阀杆材质 Stem Material	不锈钢 Stainless Steel (CF8, CF8M)

主要外形及连接尺寸(ANSI150LB) Main Outline and Connecting(ANSI150LB)

Size	2"	2-1/2"	3"	4"	5"	6"	8"	10"	12"	14"	16"
DN	50	65	80	100	125	150	200	250	300	350	400
D	150	180	190	230	255	280	345	405	485	535	595
D1	120.7	139.7	152.4	190.5	215.9	241.3	298.5	362	431.8	476.3	539.8
D2	92.1	104.8	127	157.2	185.7	215.9	269.9	323.8	381	412.8	469.9
L	50	50	50	50	50	60	60	70	76	76	89
z-d	2-18	2-18	2-18	6-18	6-22	6-22	6-22	8-26	8-26	8-30	10-30
n-m	2-M16	2-M16	2-M16	2-M16	2-M20	2-20	2-M20	4-M24	4-M24	4-M27	6-M27

气动闸阀

VP13-PGA VINCER PNEUMATIC GATE VALVE

气动闸阀适用于管道流体的切断和流量调节，具有结构简单、操作可靠等优势。广泛应用于化工、电力、石油等领域。

Pneumatic gate valves are suitable for cutting off pipeline fluids and regulating flow. They have the advantages of simple structure and reliable operation. Widely used in chemical industry, electric power, petroleum and other fields.

技术规范 Technical Parameter

- 设计标准 Design Standard: GB 12234
- 结构长度 Structure Length: GB 12221
- 法兰连接 Flange Connecting: GB/T 9113、HG 20592、JB/T 79、GBT 12224
- 试验与检验 Test and Inspection: JB/T 9092、GB/T 26480

优势 Advantage

结构简单，快速开闭，良好的密封性能

Simple structure, Quick opening and closing, Good sealing performance



气动截止阀

VP13-PGO VINCER PNEUMATIC GLOBE VALVE

使用我们的气动截止控制阀体验跨行业的精确流体调节，提供无与伦比的精度、耐用性和多功能性，从而在不同的应用实现优化的性能。

Experience precise fluid regulation across industries with our Pneumatic Globe Control Valve, offering unparalleled accuracy, durability, and versatility for optimized performance in diverse applications.

技术规范 Technical Parameter

- 设计标准 Design Standard: GB 12235、BS 1873、API 602
- 结构长度 Structure Length: GB 12221、ASME B16.10
- 法兰连接 Flange Connecting: GB/T 9113、HG 20592、JB/T 79、GBT 12224
ASME B16.5、ASME B16.47、ASME B16.11、ASME B16.25
- 试验与检验 Test and Inspection: JB/T 9092、GB/T 26480、API 598

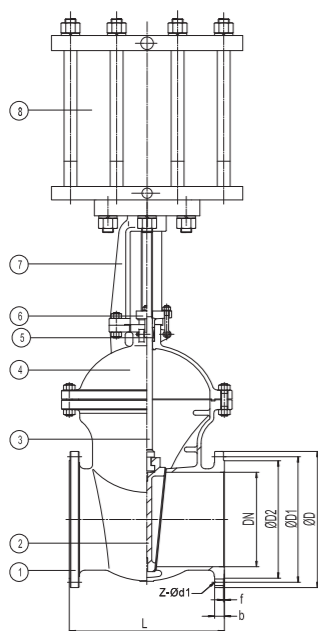
优势 Advantage

精确控制，耐用结构，广泛应用

Precision Control, Durable Construction, Versatile Applications



主要零件材质表 Main Parts Materials

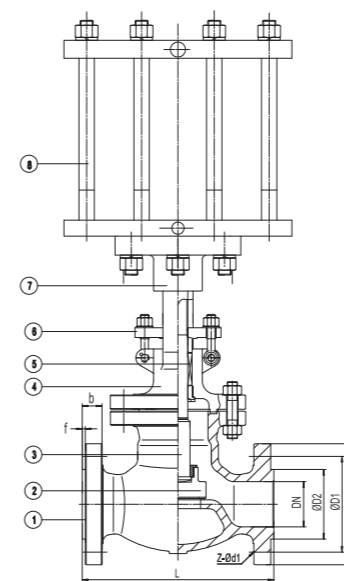


序号 No.	零件名称 Component	材质 Material
1	主阀体 Body	不锈钢304、316、WCB Stainless Steel 304、316、WCB
2	闸板 Lashboard	不锈钢304、316、WCB Stainless Steel 304、316、WCB
3	阀杆 Stem	不锈钢304、316 Stainless Steel 304、316
4	阀盖 Bonnet	不锈钢304、316、WCB Stainless Steel 304、316、WCB
5	填料 Packing	PTFE
6	填料压盖 packing gland	不锈钢304、316、WCB Stainless Steel 304、316、WCB
7	连接套 Connecting Set	不锈钢304、316 Stainless Steel 304、316
8	执行器 Actuator	直行程气动执行器 Direct stroke pneumatic actuator

主要外形及连接法兰尺寸 Main Outline and Connecting Size 1.6MPa

MEDLE	DN15	DN20	DN25	DN32	DN40	DN50	DN65	DN80	DN100	DN125	DN150
G	1/2"	3/4"	1"	1-1/4"	1-1/2"	2"	2-1/2"	3"	4"	5"	6"
D2	45	58	68	78	88	102	122	138	158	188	212
D1	65	75	85	100	110	125	145	160	180	210	240
D	95	105	115	140	150	165	185	200	220	250	285
L	108	117	127	140	240	250	270	280	300	325	350
b	16	18	18	18	18	18	18	20	20	22	22
f	2	2	2	2	2	2	2	2	2	2	2
n-M	4-φ14	4-φ14	4-φ14	4-φ18	4-φ18	4-φ18	4-φ18	8-φ18	8-φ18	8-φ18	8-φ22

主要零件材质表 Main Parts Materials



序号 No.	零件名称 Component	材质 Material
1	主阀体 Body	不锈钢304、316、WCB Stainless Steel 304、316、WCB
2	阀芯 Disc	不锈钢304、316、WCB Stainless Steel 304、316、WCB
3	阀杆 Stem	不锈钢304、316 Stainless Steel 304、316
4	阀盖 Bonnet	不锈钢304、316、WCB Stainless Steel 304、316、WCB
5	填料 Packing	PTFE
6	填料压盖 packing gland	不锈钢304、316、WCB Stainless Steel 304、316、WCB
7	连接套 Connecting Set	不锈钢304、316 Stainless Steel 304、316
8	执行器 Actuator	直行程气动执行器 Direct stroke pneumatic actuator

主要外形及连接法兰尺寸 Main Outline and Connecting Size 1.6MPa

MEDLE	DN15	DN20	DN25	DN32	DN40	DN50	DN65	DN80	DN100	DN125	DN150
G	1/2"	3/4"	1"	1-1/4"	1-1/2"	2"	2-1/2"	3"	4"	5"	6"
D2	45	58	68	78	88	102	122	138	158	188	212
D1	65	75	85	100	110	125	145	160	180	210	240
D	95	105	115	140	150	165	185	200	220	250	285
L	130	150	160	180	200	230	290	310	350	400	480
b	16	16	16	18	18	18	18	20	22	24	24
f	2	2	2	2	3	3	3	3	3	3	3
n-M	4-φ14	4-φ14	4-φ14	4-φ18	4-φ18	4-φ18	4-φ18	8-φ18	8-φ18	8-φ18	8-φ22